

**PROVINCE OF BRITISH COLUMBIA**  
**REGULATION OF THE MINISTER OF**  
**WATER, LAND AND RESOURCE STEWARDSHIP**

*Wildlife Act*

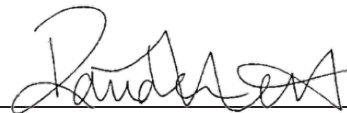
Ministerial Order No. M222

I, Randene Neill, Minister of Water, Land and Resource Stewardship, order that

- (a) the Hunting Regulation, B.C. Reg. 190/84, is amended as set out in the attached Appendix 1,
- (b) the Limited Entry Hunting Regulation, B.C. Reg. 134/93, is amended as set out in the attached Appendix 2,  
and
- (c) the Management Unit Regulation, B.C. Reg. 64/96, is amended as set out in the attached Appendix 3.

May 23, 2026

Date



Minister of Water, Land and Resource Stewardship

---

*(This part is for administrative purposes only and is not part of the Order.)*

**Authority under which Order is made:**

Act and section: *Wildlife Act*, R.S.B.C. 1996, c. 488, ss. 108 and 109

Other: OIC 1109/84; OIC 415/93; OIC 240/96; OIC 241/2018

R40963103

## APPENDIX 1

- 1** *Section 3 (c) of the Hunting Regulation, B.C. Reg. 190/84, is amended by striking out “Thompson-Nicola” and substituting “Thompson”.*
- 2** *Section 16 (1) is amended by adding “or” at the end of paragraph (c) and by repealing paragraph (g).*
- 3** *Section 16.1 (1) is amended by adding “or” at the end of paragraph (j), by striking out “or” at the end of paragraph (k) and by repealing paragraph (l).*
- 4** *The heading to Schedule 3 is amended by striking out “-NICOLA”.*
- 5** *Schedule 5 is amended in section 1 of Part 2*
  - (a)** *in subsection (2) by striking out “on map “2024 Mountain Goat Closed Area Zone A of 5-15’.” and substituting “on map ‘2024 Mountain Goat Closed Area Zone A of 5-15’.”, and*
  - (b)** *by repealing subsections (9) to (14) and substituting the following:*
    - (9)** Except as permitted under the Limited Entry Hunting Regulation (B.C. Reg. 134/93), for the purpose of section 26 (1) (c) of the Act there is no open season on mountain goat in any of the following:
      - (a)** Zone H of M.U. 5-4, as shown on map ‘2026 MOUNTAIN GOAT Zone H of 5-04’;
      - (b)** Zone A of M.U. 5-5, as shown on map ‘2018/2019 Mountain Goat Zone A of 5-05’;
      - (c)** Zone B of M.U. 5-5, as shown on map ‘2018/2019 Mountain Goat Zone B of 5-05’;
      - (d)** Zone A of M.U. 5-6, as shown on map ‘2018/2019 Mountain Goat Zone A of 5-06’;
      - (e)** Zone B of M.U. 5-6, as shown on map ‘2018/2019 Mountain Goat Zone B of 5-06’;
      - (f)** Zone A of M.U. 5-15, as shown on map ‘2025 Mountain Goat Zone A of 5-15’;
      - (g)** Zone B of M.U. 5-15, as shown on map ‘2025 Mountain Goat Zone B of 5-15’;
      - (h)** Zone E of M.U. 5-15, as shown on map ‘2026 MOUNTAIN GOAT Zone E of 5-15’.
- 6** *Schedule 6 is amended in section 6 (4) of Part 2*
  - (a)** *in paragraph (i) by striking out “map ‘2024 Moose Zone A of 6-25’” and substituting “map ‘2026 Moose Zone A of 6-25’”, and*

**(b) by adding the following paragraphs:**

- (m) Zone D of M.U. 6-25, as shown on map '2026 MOOSE Zone D of 6-25';
- (n) Zone E of M.U. 6-25, as shown on map '2026 MOOSE Zone E of 6-25'.

**7 Schedule 7 is amended in Part 1 by repealing items 20 and 20.1 and substituting the following as indicated:**

Item	Species	Management Units	Open Season	Bag Limit
20	MOOSE Bulls	7-36, 7-42, 7-43 7-50 to 7-54, 7-57**	Sept 1 to Oct 31	1
20.1	MOOSE Bulls	7-19 to 7-22, 7-31, 7-33, 7-35, 7-46 to 7-49, 7-55	Oct 25 to Oct 26 Nov 10 to Nov 11	1

**8 Schedule 7 is amended in section 13 of Part 2**

**(a) by repealing subsection (5) (b) and substituting the following:**

- (b) in M.U.s 7-36, 7-42, 7-43 except that portion that is in Zone A, 7-50 to 7-54 and 7-57 from September 1 to October 31, and,

**(b) in subsection (5) (c) by striking out “7-46 to 7-49, 7-55” and substituting “7-46 to 7-49 and 7-55”,**

**(c) in subsection (7) by striking out “subsection (5)” and substituting “subsection (5) (d), (e) or (f)”, and**

**(d) by adding the following subsection:**

- (12) Except as permitted under the Limited Entry Hunting Regulation (B.C. Reg. 134/93), for the purpose of section 26 (1) (c) of the Act, there is no open season on moose in any of the following:
  - (a) Zone A of M.U. 7-33, as shown on map '2026 MOOSE Zone A of 7-33';
  - (b) Zone B of M.U. 7-33, as shown on map '2026 MOOSE Zone B of 7-33';
  - (c) Zone A of M.U. 7-43, as shown on map '2026 MOOSE Zone A of 7-43'.

**9 Schedule 9 is amended by repealing the following maps:**

- 2022 M.U. 7-52 Moose Compulsory Inspection
- 2022 M.U. 7-52 Moose Compulsory Reporting .

## **APPENDIX 2**

**1 Section 26 of the Limited Entry Hunting Regulation, B.C. Reg. 134/93, is amended by adding the following subsection:**

- (5) During the period September 1 to September 9 the open season for antlerless elk in Zone C of M.U. 4-2, Zone I of M.U.s 4-3, 4-4, 4-5 and 4-20, Zone B of M.U.s 4-6 and 4-7 and Zone E of M.U.s 4-22 and 4-3 is restricted to hunting with a bow only.

2 Sections 26.01 and 30.1 are repealed.

3 Part 3 is amended by repealing the heading to Region 8 and substituting the following:

**Region 8 – Okanagan .**

4 Schedule I is repealed and the following substituted:

Item	Column 1 Limited Entry Hunting Area	Column 2 M.U.	Column 3 Zone	Column 4 Open Season	Column 5 Type of Wildlife	Column 6 ROA
1	In those portions of Regions 3 through 8 in which there is an open season for any ram mountain sheep		Region 3 Region 4 Region 5 Region 6 Region 7 Region 8	Sept 10-Dec 20 Sept 10-Dec 20 Sept 1-Dec 20 Aug 1-Dec 20 Aug 1-Dec 20 Aug 25-Dec 20	any ram mountain sheep	1
2	Spatsizi	6-20	A	Aug 1-Oct 15	full curl thinhorn ram mountain sheep	20-110
3	Mount Edziza	6-21	A	Aug 1-Oct 15	full curl thinhorn ram mountain sheep	1-50
4	Atlin	6-25	D	Aug 1-Oct 15	full curl thinhorn ram mountain sheep	1-100
5	Atlin	6-27	A	Aug 1-Oct 15	full curl thinhorn ram mountain sheep	1-100
6	Tatshenshini	6-28		Aug 1-Oct 15	full curl thinhorn ram mountain sheep	1-100
7	Tatshenshini	6-29		Aug 1-Oct 15	full curl thinhorn ram mountain sheep	1-50

Item	Column 1 <b>Limited Entry Hunting Area</b>	Column 2 <b>M.U.</b>	Column 3 <b>Zone</b>	Column 4 <b>Open Season</b>	Column 5 <b>Type of Wildlife</b>	Column 6 <b>ROA</b>
8	Quadra Island	1-15	A	Sept 10-Dec 10	antlerless mule (black-tailed) deer	1-100
9	Vancouver Island	1-4	A	Sept 1-Oct 10	elk – either sex	1-50
10	Vancouver Island	1-4	A	Oct 15-Nov 10	elk – either sex	1-50
11	Vancouver Island	1-4	A	Nov 15-Dec 10	elk – either sex	1-50
12	Vancouver Island	1-4	A	Dec 15-Jan 10	elk – either sex	1-50
13	Vancouver Island	1-5	D	Oct 10-Dec 15	elk – either sex	1-50
14	Vancouver Island	1-6	A	Sept 10-Sept 30	elk – either sex	1-50
15	Vancouver Island	1-6	A	Oct 10-Dec 24	elk – either sex	1-50
16	Vancouver Island	1-6	B	Sept 10-Dec 15	elk – either sex	1-50
17	Vancouver Island	1-12	C	Sept 10-Dec 15	elk – either sex	1-50
18	Vancouver Island	1-3	B	Dec 1-Dec 15	antlerless elk	1-50
19	Vancouver Island	1-4	A	Sept 1-Oct 10	antlerless elk	1-50
20	Vancouver Island	1-4	B	Dec 1-Dec 15	antlerless elk	1-50
21	Vancouver Island	1-4	C	Dec 1-Dec 15	antlerless elk	1-50
22	Vancouver Island	1-5	C	Dec 1-Dec 15	antlerless elk	1-50
23	Vancouver Island	1-9	A, D	Dec 1-Dec 15	antlerless elk	1-50
24	Vancouver Island	1-9	B	Dec 1-Dec 15	antlerless elk	1-50
25	Vancouver Island	1-9	C	Dec 1-Dec 15	antlerless elk	1-50
26	Vancouver Island	1-10	A	Dec 1-Dec 15	antlerless elk	1-50
27	Vancouver Island	1-10	B	Dec 1-Dec 15	antlerless elk	1-50
28	Vancouver Island	1-10	C	Dec 1-Dec 15	antlerless elk	1-50
29	Vancouver Island	1-10	H	Sept 1-Sept 20	antlerless elk	1-50

Item	Column 1 <b>Limited Entry Hunting Area</b>	Column 2 <b>M.U.</b>	Column 3 <b>Zone</b>	Column 4 <b>Open Season</b>	Column 5 <b>Type of Wildlife</b>	Column 6 <b>ROA</b>
30	Vancouver Island	1-10	H	Sept 21-Oct 10	antlerless elk	1-50
31	Vancouver Island	1-10	D, H	Oct 11-Dec 31	antlerless elk	1-50
32	Vancouver Island	1-10	E	Sept 10-Dec 15	antlerless elk	1-50
33	Vancouver Island	1-10	F	Dec 1-Dec 15	antlerless elk	1-50
34	Vancouver Island	1-10	G	Dec 1-Dec 15	antlerless elk	1-50
35	Vancouver Island	1-11	A	Dec 1-Dec 31	antlerless elk	1-50
36	Vancouver Island	1-11	B	Dec 1-Dec 31	antlerless elk	1-50
37	Vancouver Island	1-3	A	Oct 10-Nov 20	bull elk	1-50
38	Vancouver Island	1-3	B	Oct 10-Nov 20	bull elk	1-50
39	Vancouver Island	1-4	B	Oct 10-Nov 20	bull elk	1-50
40	Vancouver Island	1-4	C	Oct 10-Nov 20	bull elk	1-50
41	Vancouver Island	1-5	A	Beginning the first Saturday before Thanksgiving Day and ending the last Sunday of November	bull elk	1-50
42	Vancouver Island	1-5	B	Beginning the first Saturday before Thanksgiving Day and ending the last Sunday of November	bull elk	1-50
43	Vancouver Island	1-5	C	Oct 10-Nov 20	bull elk	1-50
44	Vancouver Island	1-6	D	Oct 10-Nov 20	bull elk	1-50
45	Vancouver Island	1-9	A	Oct 10-Nov 20	bull elk	1-50
46	Vancouver Island	1-9	B	Oct 10-Nov 20	bull elk	1-50
47	Vancouver Island	1-9	C	Oct 10-Nov 20	bull elk	1-50
48	Vancouver Island	1-9	D	Oct 10-Oct 20	bull elk	1-50
49	Vancouver Island	1-9	D	Oct 21-Nov 20	bull elk	1-50

Item	Column 1 <b>Limited Entry Hunting Area</b>	Column 2 <b>M.U.</b>	Column 3 <b>Zone</b>	Column 4 <b>Open Season</b>	Column 5 <b>Type of Wildlife</b>	Column 6 <b>ROA</b>
50	Vancouver Island	1-10	A	Oct 10-Nov 20	bull elk	1-50
51	Vancouver Island	1-10	B	Oct 10-Oct 20	bull elk	1-50
52	Vancouver Island	1-10	B	Oct 21-Nov 20	bull elk	1-50
53	Vancouver Island	1-10	C	Oct 10-Oct 20	bull elk	1-50
54	Vancouver Island	1-10	C	Oct 21-Nov 20	bull elk	1-50
55	Vancouver Island	1-10	H	Sept 10-Sept 30	bull elk	1-50
56	Vancouver Island	1-10	H	Oct 1-Oct 20	bull elk	1-50
57	Vancouver Island	1-10	D, H	Oct 10-Nov 10	bull elk	1-50
58	Vancouver Island	1-10	D, H	Nov 11-Nov 30	bull elk	1-50
59	Vancouver Island	1-10	D, H	Dec 1-Dec 20	bull elk	1-50
60	Vancouver Island	1-10	E	Oct 10-Nov 20	bull elk	1-50
61	Vancouver Island	1-10	F	Oct 10-Nov 20	bull elk	1-50
62	Vancouver Island	1-10	G	Oct 10-Nov 20	bull elk	1-50
63	Vancouver Island	1-10	I	Oct 10-Nov 20	bull elk	1-50
64	Vancouver Island	1-11	A	Oct 1-Nov 20	bull elk	1-50
65	Vancouver Island	1-11	B	Oct 1-Oct 15	bull elk	1-50
66	Vancouver Island	1-11	B	Oct 16-Nov 20	bull elk	1-50
67	Vancouver Island	1-12	B	Oct 10-Nov 20	bull elk	1-50
68	Vancouver Island	1-12	D	Oct 10-Nov 20	bull elk	1-50
69	Vancouver Island	1-13	C	Oct 10-Nov 20	bull elk	1-50
70	Pemberton	2-11		Oct 1-Oct 31	antlerless mule (black-tailed) deer	1-100
71	Pemberton	2-11		Nov 1-Nov 30	antlerless mule (black-tailed) deer	1-100

Item	Column 1 <b>Limited Entry Hunting Area</b>	Column 2 <b>M.U.</b>	Column 3 <b>Zone</b>	Column 4 <b>Open Season</b>	Column 5 <b>Type of Wildlife</b>	Column 6 <b>ROA</b>
72	Sechelt	2-5	A	Oct 15-Nov 15	antlerless elk	1-20
73	Sechelt	2-5	A	Nov 16-Dec 15	antlerless elk	1-20
74	Sechelt	2-5	C	Oct 15-Nov 15	antlerless elk	1-20
75	Sechelt	2-5	C	Nov 16-Dec 15	antlerless elk	1-20
76	Narrow/Tzoonie	2-5	D	Nov 1-Nov 30	antlerless elk	1-10
77	McNab Creek	2-5	F	Nov 1-Nov 30	antlerless elk	1-10
78	Deserted River	2-5	G	Nov 1-Nov 30	antlerless elk	1-10
79	Vancouver River	2-5	H	Nov 1-Nov 30	antlerless elk	1-10
80	Rainy River	2-5	I	Oct 15-Nov 15	antlerless elk	1-20
81	Rainy River	2-5	I	Nov 16-Dec 15	antlerless elk	1-20
82	Rainy-Grey	2-5	J	Oct 1-Oct 31	antlerless elk	1-20
83	Rainy-Grey	2-5	J	Nov 1-Nov 30	antlerless elk	1-20
84	Grey River	2-5	K	Oct 15-Nov 15	antlerless elk	1-20
85	Grey River	2-5	K	Nov 16-Dec 15	antlerless elk	1-20
86	Squamish River	2-6	A	Nov 1-Nov 30	antlerless elk	1-20
87	Indian River	2-8	A	Nov 1-Nov 14	antlerless elk	1-10
88	Indian River	2-8	A	Nov 15-Nov 30	antlerless elk	1-10
89	Pitt River	2-8	B	Nov 1-Nov 9	antlerless elk	1-10
90	Pitt River	2-8	B	Nov 10-Nov 20	antlerless elk	1-10
91	Pitt River	2-8	B	Nov 21-Nov 30	antlerless elk	1-10
92	Pitt River	2-8	B	Dec 1-Dec 15	antlerless elk	1-15
93	Stave River	2-8	C	Nov 1-Nov 30	antlerless elk	1-10
94	Powell River	2-12	A	Nov 1-Nov 30	antlerless elk	1-20

Item	Column 1 <b>Limited Entry Hunting Area</b>	Column 2 <b>M.U.</b>	Column 3 <b>Zone</b>	Column 4 <b>Open Season</b>	Column 5 <b>Type of Wildlife</b>	Column 6 <b>ROA</b>
95	Powell River	2-12	B	Nov 1-Nov 30	antlerless elk	1-20
96	Daniels River	2-12	D	Oct 20-Nov 9	antlerless elk	1-10
97	Daniels River	2-12	D	Nov 10-Nov 30	antlerless elk	1-10
98	Brittain River	2-12	E	Oct 10-Nov 20	antlerless elk	1-10
99	Skwawka River	2-12	Q	Nov 16-Nov 30	antlerless elk	1-20
100	Skwawka River	2-12	Q	Dec 1-Dec 15	antlerless elk	1-20
101	Orford River	2-14	A	Nov 21-Dec 31	antlerless elk	1-20
102	Southgate River	2-14	B	Nov 1-Dec 10	antlerless elk	1-20
103	Homathco River	2-15	A	Nov 1-Dec 10	antlerless elk	1-20
104	Sechelt	2-5	A, C	Oct 1-Oct 9	bull elk	1-10
105	Sechelt	2-5	A, C	Oct 10-Nov 20	bull elk	1-20
106	Sechelt	2-5	C	Oct 1-Oct 31	bull elk	1-20
107	Sechelt	2-5	C	Nov 1-Nov 30	bull elk	1-20
108	Narrow/Tzoonie	2-5	D	Oct 1-Oct 9	bull elk	1-10
109	Narrow/Tzoonie	2-5	D	Oct 10-Oct 31	bull elk	1-10
110	Clowhom River	2-5	E	Oct 10-Nov 20	bull elk	1-10
111	McNab Creek	2-5	F	Oct 1-Oct 9	bull elk	1-10
112	McNab Creek	2-5	F	Oct 10-Oct 20	bull elk	1-10
113	McNab Creek	2-5	F	Oct 21-Nov 20	bull elk	1-10
114	Deserted River	2-5	G	Oct 1-Oct 9	bull elk	1-10
115	Deserted River	2-5	G	Oct 10-Oct 31	bull elk	1-10
116	Vancouver River	2-5	H	Oct 1-Oct 9	bull elk	1-10
117	Vancouver River	2-5	H	Oct 10-Oct 31	bull elk	1-10

Item	Column 1 <b>Limited Entry Hunting Area</b>	Column 2 <b>M.U.</b>	Column 3 <b>Zone</b>	Column 4 <b>Open Season</b>	Column 5 <b>Type of Wildlife</b>	Column 6 <b>ROA</b>
118	Rainy River	2-5	I	Oct 1-Oct 9	bull elk	1-10
119	Rainy River	2-5	I	Oct 10-Nov 20	bull elk	1-10
120	Rainy-Grey	2-5	J	Oct 1-Oct 31	bull elk	1-10
121	Rainy-Grey	2-5	J	Nov 1-Nov 30	bull elk	1-10
122	Grey River	2-5	K	Oct 1-Oct 9	bull elk	1-10
123	Grey River	2-5	K	Oct 10-Nov 20	bull elk	1-20
124	Squamish River	2-6	A	Oct 1-Oct 9	bull elk	1-10
125	Squamish River	2-6	A	Oct 10-Nov 20	bull elk	1-10
126	Indian River	2-8	A	Oct 1-Oct 9	bull elk	1-10
127	Indian River	2-8	A	Oct 10-Oct 31	bull elk	1-10
128	Pitt River	2-8	B	Oct 1-Oct 9	bull elk	1-10
129	Pitt River	2-8	B	Oct 10-Oct 20	bull elk	1-10
130	Pitt River	2-8	B	Oct 21-Oct 31	bull elk	1-10
131	Stave River	2-8	C	Oct 1-Oct 9	bull elk	1-10
132	Stave River	2-8	C	Oct 10-Oct 31	bull elk	1-10
133	Douglas	2-9	A	Oct 10-Oct 31	bull elk	1-10
134	Powell River	2-12	A, B	Oct 10-Nov 20	bull elk	1-10
135	Powell River	2-12	B	Oct 1-Oct 31	bull elk	1-10
136	Powell River	2-12	B	Nov 1-Nov 30	bull elk	1-10
137	Daniels River	2-12	D	Oct 1-Oct 9	bull elk	1-10
138	Daniels River	2-12	D	Oct 10-Oct 31	bull elk	1-10
139	Brittain River	2-12	E	Oct 10-Oct 20	bull elk	1-10
140	Brittain River	2-12	E	Oct 21-Nov 20	bull elk	1-10

Item	Column 1 <b>Limited Entry Hunting Area</b>	Column 2 <b>M.U.</b>	Column 3 <b>Zone</b>	Column 4 <b>Open Season</b>	Column 5 <b>Type of Wildlife</b>	Column 6 <b>ROA</b>
141	Theodosia River	2-12	F	Oct 10-Nov 20	bull elk	1-10
142	Skwawka River	2-12	Q	Oct 1-Oct 15	bull elk	1-10
143	Skwawka River	2-12	Q	Oct 16-Oct 31	bull elk	1-10
144	Skwawka River	2-12	Q	Nov 1-Nov 15	bull elk	1-10
145	Stillwater	2-12	S	Oct 10-Nov 20	bull elk	1-10
146	Orford River	2-14	A	Oct 20-Oct 31	bull elk	1-10
147	Orford River	2-14	A	Nov 1-Nov 20	bull elk	1-10
148	Southgate River	2-14	B	Oct 1-Oct 9	bull elk	1-10
149	Southgate River	2-14	B	Oct 10-Nov 20	bull elk	1-10
150	Homathko River	2-15	A	Oct 1-Oct 9	bull elk	1-10
151	Homathko River	2-15	A	Oct 10-Nov 20	bull elk	1-10
152	Chehalis	2-19	A	Oct 10-Oct 31	bull elk	1-10
153	Mt. Meager	2-11	A	Sept 1-Oct 31	adult mountain goat	1-10
154	Upper Lillooet	2-11	B	Sept 1-Oct 31	adult mountain goat	1-10
155	Kamloops	3-12		Nov 1-Nov 30	antlerless mule (black-tailed) deer	1-200
156	Kamloops	3-13		Nov 1-Nov 30	antlerless mule (black-tailed) deer	1-200
157	Kamloops	3-14		Nov 1-Nov 30	antlerless mule (black-tailed) deer	1-200
158	Kamloops	3-15		Nov 1-Nov 30	antlerless mule (black-tailed) deer	1-200
159	Kamloops	3-16		Nov 1-Nov 30	antlerless mule (black-tailed) deer	1-200

Item	Column 1 <b>Limited Entry Hunting Area</b>	Column 2 <b>M.U.</b>	Column 3 <b>Zone</b>	Column 4 <b>Open Season</b>	Column 5 <b>Type of Wildlife</b>	Column 6 <b>ROA</b>
160	Kamloops	3-17		Nov 1-Nov 30	antlerless mule (black-tailed) deer	1-200
161	Kamloops	3-18		Nov 1-Nov 30	antlerless mule (black-tailed) deer	1-200
162	Kamloops	3-19		Nov 1-Nov 30	antlerless mule (black-tailed) deer	1-200
163	Kamloops	3-20		Nov 1-Nov 30	antlerless mule (black-tailed) deer	1-200
164	Kamloops	3-26		Nov 1-Nov 30	antlerless mule (black-tailed) deer	1-200
165	Kamloops	3-27		Nov 1-Nov 30	antlerless mule (black-tailed) deer	1-200
166	Kamloops	3-28		Nov 1-Nov 30	antlerless mule (black-tailed) deer	1-200
167	Kamloops	3-29		Nov 1-Nov 30	antlerless mule (black-tailed) deer	1-200
168	Kamloops	3-30		Nov 1-Nov 30	antlerless mule (black-tailed) deer	1-200
169	Kamloops	3-31		Nov 1-Nov 30	antlerless mule (black-tailed) deer	1-200
170	Kamloops	3-32		Nov 1-Nov 30	antlerless mule (black-tailed) deer	1-200
171	Kamloops	3-33		Nov 1-Nov 30	antlerless mule (black-tailed) deer	1-200
172	Kamloops	3-36		Nov 1-Nov 30	antlerless mule (black-tailed) deer	1-200
173	Kamloops	3-37		Nov 1-Nov 30	antlerless mule (black-tailed) deer	1-200

Item	Column 1 <b>Limited Entry Hunting Area</b>	Column 2 <b>M.U.</b>	Column 3 <b>Zone</b>	Column 4 <b>Open Season</b>	Column 5 <b>Type of Wildlife</b>	Column 6 <b>ROA</b>
174	Kamloops	3-38		Nov 1-Nov 30	antlerless mule (black-tailed) deer	1-200
175	Kamloops	3-39		Nov 1-Nov 30	antlerless mule (black-tailed) deer	1-200
176	Kamloops	3-40		Nov 1-Nov 30	antlerless mule (black-tailed) deer	1-200
177	Kamloops	3-41		Nov 1-Nov 30	antlerless mule (black-tailed) deer	1-200
178	Kamloops	3-42		Nov 1-Nov 30	antlerless mule (black-tailed) deer	1-200
179	Kamloops	3-46		Nov 1-Nov 30	antlerless mule (black-tailed) deer	1-200
180	Kamloops	3-12		Nov 1-Nov 10	antlerless moose	1-100
181	Kamloops	3-13		Nov 1-Nov 10	antlerless moose	1-100
182	Kamloops	3-18		Nov 1-Nov 10	antlerless moose	1-100
183	Kamloops	3-19		Nov 1-Nov 10	antlerless moose	1-100
184	Kamloops	3-20		Nov 1-Nov 10	antlerless moose	1-100
185	Kamloops	3-26		Nov 1-Nov 10	antlerless moose	1-100
186	Kamloops	3-27		Nov 1-Nov 10	antlerless moose	1-100
187	Kamloops	3-28		Nov 1-Nov 10	antlerless moose	1-100
188	Kamloops	3-29		Nov 1-Nov 10	antlerless moose	1-100
189	Kamloops	3-30		Nov 1-Nov 10	antlerless moose	1-100
190	Kamloops	3-31		Nov 1-Nov 10	antlerless moose	1-100
191	Kamloops	3-36		Nov 1-Nov 10	antlerless moose	1-100

Item	Column 1 <b>Limited Entry Hunting Area</b>	Column 2 <b>M.U.</b>	Column 3 <b>Zone</b>	Column 4 <b>Open Season</b>	Column 5 <b>Type of Wildlife</b>	Column 6 <b>ROA</b>
192	Kamloops	3-37		Nov 1-Nov 10	antlerless moose	1-100
193	Kamloops	3-39		Nov 1-Nov 10	antlerless moose	1-100
194	Kamloops	3-40		Nov 1-Nov 10	antlerless moose	1-100
195	Kamloops	3-41		Nov 1-Nov 10	antlerless moose	1-100
196	Kamloops	3-42		Nov 1-Nov 10	antlerless moose	1-100
197	Kamloops	3-44		Nov 1-Nov 10	antlerless moose	1-100
198	Kamloops	3-46		Sept 20-Sept 30	bull moose	1-100
199	Kamloops	3-12	A	Oct 1-Oct 31	bull moose	1-100
200	Kamloops	3-12	B	Oct 1-Oct 31	bull moose	1-100
201	Kamloops	3-13		Oct 1-Oct 31	bull moose	1-100
202	Kamloops	3-17		Oct 1-Oct 31	bull moose	1-100
203	Kamloops	3-18		Oct 1-Oct 31	bull moose	1-100
204	Kamloops	3-19	A	Oct 1-Oct 31	bull moose	1-100
205	Kamloops	3-19	B	Oct 1-Oct 31	bull moose	1-100
206	Kamloops	3-20		Oct 1-Oct 31	bull moose	1-100
207	Kamloops	3-26		Oct 1-Oct 31	bull moose	1-100
208	Kamloops	3-27		Oct 1-Oct 31	bull moose	1-100
209	Kamloops	3-28	A	Oct 1-Oct 31	bull moose	1-100
210	Kamloops	3-28	B	Oct 1-Oct 31	bull moose	1-100
211	Kamloops	3-29	A	Oct 1-Oct 31	bull moose	1-100
212	Kamloops	3-29	B	Oct 1-Oct 31	bull moose	1-100
213	Kamloops	3-30	A	Oct 1-Oct 31	bull moose	1-100
214	Kamloops	3-30	B	Oct 1-Oct 31	bull moose	1-100

Item	Column 1 <b>Limited Entry Hunting Area</b>	Column 2 <b>M.U.</b>	Column 3 <b>Zone</b>	Column 4 <b>Open Season</b>	Column 5 <b>Type of Wildlife</b>	Column 6 <b>ROA</b>
215	Kamloops	3-31	A	Oct 1-Oct 31	bull moose	1-100
216	Kamloops	3-31	B	Oct 1-Oct 31	bull moose	1-100
217	Kamloops	3-32		Oct 1-Oct 31	bull moose	1-100
218	Kamloops	3-33		Oct 1-Oct 31	bull moose	1-100
219	Kamloops	3-35		Oct 1-Oct 31	bull moose	1-100
220	Kamloops	3-36		Oct 1-Oct 31	bull moose	1-100
221	Kamloops	3-37		Oct 1-Oct 31	bull moose	1-100
222	Kamloops	3-38		Oct 1-Oct 31	bull moose	1-100
223	Kamloops	3-39		Oct 1-Oct 31	bull moose	1-100
224	Kamloops	3-40		Oct 1-Oct 31	bull moose	1-100
225	Kamloops	3-41		Oct 1-Oct 31	bull moose	1-100
226	Kamloops	3-42		Oct 1-Oct 31	bull moose	1-100
227	Kamloops	3-43		Oct 1-Oct 31	bull moose	1-100
228	Kamloops	3-44		Oct 1-Oct 31	bull moose	1-100
229	Kamloops	3-46		Oct 1-Oct 31	bull moose	1-100
230	Kamloops	3-12	A	Nov 1-Nov 30	bull moose	1-100
231	Kamloops	3-12	B	Nov 1-Nov 30	bull moose	1-100
232	Kamloops	3-13		Nov 1-Nov 30	bull moose	1-100
233	Kamloops	3-17		Nov 1-Nov 30	bull moose	1-100
234	Kamloops	3-18		Nov 1-Nov 30	bull moose	1-100
235	Kamloops	3-19	A	Nov 1-Nov 30	bull moose	1-100
236	Kamloops	3-19	B	Nov 1-Nov 30	bull moose	1-100
237	Kamloops	3-20		Nov 1-Nov 30	bull moose	1-100

Item	Column 1 <b>Limited Entry Hunting Area</b>	Column 2 <b>M.U.</b>	Column 3 <b>Zone</b>	Column 4 <b>Open Season</b>	Column 5 <b>Type of Wildlife</b>	Column 6 <b>ROA</b>
238	Kamloops	3-26		Nov 1-Nov 30	bull moose	1-100
239	Kamloops	3-27		Nov 1-Nov 30	bull moose	1-100
240	Kamloops	3-28	A	Nov 1-Nov 30	bull moose	1-100
241	Kamloops	3-28	B	Nov 1-Nov 30	bull moose	1-100
242	Kamloops	3-29	A	Nov 1-Nov 30	bull moose	1-100
243	Kamloops	3-29	B	Nov 1-Nov 30	bull moose	1-100
244	Kamloops	3-30	A	Nov 1-Nov 30	bull moose	1-100
245	Kamloops	3-30	B	Nov 1-Nov 30	bull moose	1-100
246	Kamloops	3-31	A	Nov 1-Nov 30	bull moose	1-100
247	Kamloops	3-31	B	Nov 1-Nov 30	bull moose	1-100
248	Kamloops	3-32		Nov 1-Nov 30	bull moose	1-100
249	Kamloops	3-33		Nov 1-Nov 30	bull moose	1-100
250	Kamloops	3-35		Nov 1-Nov 30	bull moose	1-100
251	Kamloops	3-36		Nov 1-Nov 30	bull moose	1-100
252	Kamloops	3-37		Nov 1-Nov 30	bull moose	1-100
253	Kamloops	3-38		Nov 1-Nov 30	bull moose	1-100
254	Kamloops	3-39		Nov 1-Nov 30	bull moose	1-100
255	Kamloops	3-40		Nov 1-Nov 30	bull moose	1-100
256	Kamloops	3-41		Nov 1-Nov 30	bull moose	1-100
257	Kamloops	3-42		Nov 1-Nov 30	bull moose	1-100
258	Kamloops	3-43		Nov 1-Nov 30	bull moose	1-100
259	Kamloops	3-44		Nov 1-Nov 30	bull moose	1-100
260	Kamloops	3-46		Nov 1-Nov 30	bull moose	1-100

Item	Column 1 <b>Limited Entry Hunting Area</b>	Column 2 <b>M.U.</b>	Column 3 <b>Zone</b>	Column 4 <b>Open Season</b>	Column 5 <b>Type of Wildlife</b>	Column 6 <b>ROA</b>
261	Kamloops	3-46		Dec 1-Dec 10	bull moose	1-100
262	Nahatlatch River	3-15	A	Sept 1-Nov 30	adult mountain goat	1-10
263	Kamloops	3-16	A	Sept 1-Nov 30	adult mountain goat	1-20
264	Kamloops	3-16	B	Sept 1-Nov 30	adult mountain goat	1-20
265	Kamloops	3-16	C	Sept 1-Nov 30	adult mountain goat	1-20
266	Kamloops	3-16	H	Sept 1-Nov 30	adult mountain goat	1-20
267	Kamloops	3-16	E	Sept 1-Nov 30	adult mountain goat	1-20
268	Kamloops	3-16	G	Sept 1-Nov 30	adult mountain goat	1-20
269	Kamloops	3-32	E	Sept 1-Nov 30	adult mountain goat	1-20
270	Kamloops	3-32	F	Sept 1-Nov 30	adult mountain goat	1-20
271	Kamloops	3-33	A	Sept 1-Nov 30	adult mountain goat	1-20
272	Kamloops	3-33	B	Sept 1-Nov 30	adult mountain goat	1-20
273	Kamloops	3-33	C	Sept 1-Nov 30	adult mountain goat	1-20
274	Kamloops	3-33	E	Sept 1-Nov 30	adult mountain goat	1-20
275	Kamloops	3-33	F	Sept 1-Nov 30	adult mountain goat	1-20
276	Kamloops	3-35, 3-36	A	Sept 1-Nov 30	adult mountain goat	1-20
277	Kamloops	3-36, 3-37, 3-42	A	Sept 1-Nov 30	adult mountain goat	1-20
278	Kamloops	3-41, 3-42	A	Sept 1-Nov 30	adult mountain goat	1-20
279	Kamloops	3-46	A	Sept 20-Nov 30	adult mountain goat	1-5
280	Spences Bridge	3-17	C	Nov 1-Nov 20	bighorn ram mountain sheep	1-10

Item	Column 1 <b>Limited Entry Hunting Area</b>	Column 2 <b>M.U.</b>	Column 3 <b>Zone</b>	Column 4 <b>Open Season</b>	Column 5 <b>Type of Wildlife</b>	Column 6 <b>ROA</b>
281	Kamloops Lake	3-29	E	Nov 1-Nov 20	bighorn ram mountain sheep	1-10
282	Fraser River	3-17	A	Sept 20-Oct 20	3/4 curl ram mountain sheep	1-10
283	Fraser River	3-17	B	Sept 20-Oct 20	3/4 curl ram mountain sheep	1-10
284	Fraser River	3-17	D	Sept 20-Oct 20	3/4 curl ram mountain sheep	1-10
285	Fraser River	3-31	A	Sept 20-Oct 20	3/4 curl ram mountain sheep	1-10
286	Fraser River	3-31	B	Sept 20-Oct 20	3/4 curl ram mountain sheep	1-10
287	Fraser River	3-31	C	Sept 20-Oct 20	3/4 curl ram mountain sheep	1-10
288	Fraser River	3-31	D	Sept 20-Oct 20	3/4 curl ram mountain sheep	1-10
289	Relay Creek	3-32	D	Sept 20-Oct 20	3/4 curl ram mountain sheep	1-20
290	Shulaps Range	3-32	E	Sept 20-Oct 20	3/4 curl ram mountain sheep	1-20
291	Fraser River	3-32	F	Sept 20-Oct 20	3/4 curl ram mountain sheep	1-20
292	Fraser River	3-32	G	Sept 20-Oct 20	3/4 curl ram mountain sheep	1-20
293	Fraser River	3-17	A	Nov 1-Nov 15	ewe or juvenile mountain sheep	1-20

Item	Column 1 <b>Limited Entry Hunting Area</b>	Column 2 <b>M.U.</b>	Column 3 <b>Zone</b>	Column 4 <b>Open Season</b>	Column 5 <b>Type of Wildlife</b>	Column 6 <b>ROA</b>
294	Fraser River	3-31	B	Nov 1-Nov 15	ewe or juvenile mountain sheep	1-20
295	Fraser River	3-31	C	Nov 1-Nov 15	ewe or juvenile mountain sheep	1-30
296	Fraser River	3-32	C	Nov 1-Nov 15	ewe or juvenile mountain sheep	1-30
297*	Grasmere	4-2	C	Aug 15-Aug 31	antlerless elk	1-50
298*	Creston	4-6, 4-7	B	Aug 15-Aug 31	antlerless elk	1-50
299*	Fort Steele	4-22, 4-3	E	Aug 15-Aug 31	antlerless elk	1-100
300	Grasmere	4-2	C	Sept 1-Sept 9	antlerless elk	1-20
301	Grasmere	4-2	C	Sept 10-Sept 30	antlerless elk	1-50
302	Cranbrook	4-3, 4-4, 4-5, 4-20	I	Sept 1-Sept 9	antlerless elk	1-50
303	Cranbrook	4-3, 4-4, 4-5, 4-20	I	Sept 10-Sept 30	antlerless elk	1-100
304	Creston	4-6, 4-7	B	Sept 1-Sept 9	antlerless elk	1-20
305	Creston	4-6, 4-7	B	Sept 10-Sept 30	antlerless elk	1-50
306	Fort Steele	4-22, 4-3	E	Sept 1-Sept 9	antlerless elk	1-50
307	Fort Steele	4-22, 4-3	E	Sept 10-Sept 30	antlerless elk	1-150
308	Kootenay	4-38	D	Oct 16-Nov 30	antlerless moose	1-200
309	Kootenay	4-38	E	Oct 16-Nov 30	antlerless moose	1-200
310	Kootenay	4-38	F	Oct 16-Nov 30	antlerless moose	1-200
311	Kootenay	4-39	D	Oct 16-Nov 30	antlerless moose	1-200
312	Kootenay	4-39	E	Oct 16-Nov 30	antlerless moose	1-200

Item	Column 1 <b>Limited Entry Hunting Area</b>	Column 2 <b>M.U.</b>	Column 3 <b>Zone</b>	Column 4 <b>Open Season</b>	Column 5 <b>Type of Wildlife</b>	Column 6 <b>ROA</b>
313	Kootenay	4-39	F	Oct 16-Nov 30	antlerless moose	1-200
314	Kootenay	4-1	A	Sept 1-Nov 15	bull moose	1-50
315	Kootenay	4-1	B	Sept 1-Nov 15	bull moose	1-50
316	Kootenay	4-2	A	Sept 1-Nov 15	bull moose	1-50
317	Kootenay	4-2	B	Sept 1-Nov 15	bull moose	1-50
318	Kootenay	4-3		Sept 1-Nov 15	bull moose	1-50
319	Kootenay	4-4		Sept 1-Nov 15	bull moose	1-50
320	Kootenay	4-5		Sept 1-Nov 15	bull moose	1-50
321	Kootenay	4-6		Sept 1-Nov 15	bull moose	1-50
322	Kootenay	4-7		Sept 1-Nov 15	bull moose	1-50
323	Kootenay	4-8		Sept 1-Nov 15	bull moose	1-50
324	Kootenay	4-9		Sept 1-Nov 15	bull moose	1-50
325	Kootenay	4-14		Sept 1-Nov 15	bull moose	1-50
326	Kootenay	4-15		Sept 1-Nov 15	bull moose	1-50
327	Kootenay	4-16		Sept 1-Nov 15	bull moose	1-50
328	Kootenay	4-17		Sept 1-Nov 15	bull moose	1-50
329	Kootenay	4-18		Sept 1-Nov 15	bull moose	1-50
330	Kootenay	4-19		Sept 1-Nov 15	bull moose	1-50
331	Kootenay	4-20		Sept 1-Nov 15	bull moose	1-50
332	Kootenay	4-21		Sept 1-Nov 15	bull moose	1-50
333	Kootenay	4-22		Sept 1-Nov 15	bull moose	1-50
334	Kootenay	4-23	A	Sept 1-Nov 15	bull moose	1-100
335	Kootenay	4-23	B	Sept 1-Nov 15	bull moose	1-100
336	Kootenay	4-24		Sept 1-Nov 15	bull moose	1-50

Item	Column 1 <b>Limited Entry Hunting Area</b>	Column 2 <b>M.U.</b>	Column 3 <b>Zone</b>	Column 4 <b>Open Season</b>	Column 5 <b>Type of Wildlife</b>	Column 6 <b>ROA</b>
337	Kootenay	4-25		Sept 1-Nov 15	bull moose	1-50
338	Kootenay	4-26		Sept 1-Nov 15	bull moose	1-50
339	Kootenay	4-27		Sept 1-Nov 15	bull moose	1-50
340	Kootenay	4-28		Sept 1-Nov 15	bull moose	1-50
341	Kootenay	4-29		Sept 1-Nov 15	bull moose	1-50
342	Kootenay	4-30		Sept 1-Nov 15	bull moose	1-50
343	Kootenay	4-31		Sept 1-Nov 15	bull moose	1-50
344	Kootenay	4-32	A	Sept 1-Nov 15	bull moose	1-50
345	Kootenay	4-32	B	Sept 1-Nov 15	bull moose	1-50
346	Kootenay	4-33		Sept 1-Nov 15	bull moose	1-50
347	Kootenay	4-34		Sept 1-Nov 15	bull moose	1-50
348	Kootenay	4-35		Sept 1-Nov 15	bull moose	1-50
349	Kootenay	4-36		Sept 1-Nov 15	bull moose	1-50
350	Kootenay	4-37		Sept 1-Nov 15	bull moose	1-50
351	Kootenay	4-38	D	Sept 1-Nov 15	bull moose	1-200
352	Kootenay	4-38	E	Sept 1-Nov 15	bull moose	1-200
353	Kootenay	4-38	F	Sept 1-Nov 15	bull moose	1-200
354	Kootenay	4-39	D	Sept 1-Nov 15	bull moose	1-200
355	Kootenay	4-39	E	Sept 1-Nov 15	bull moose	1-200
356	Kootenay	4-39	F	Sept 1-Nov 15	bull moose	1-200
357	Kootenay	4-40		Sept 1-Nov 15	bull moose	1-50
358	Kootenay	4-1	A	Sept 1-Nov 30	adult mountain goat	1-50

Item	Column 1 <b>Limited Entry Hunting Area</b>	Column 2 <b>M.U.</b>	Column 3 <b>Zone</b>	Column 4 <b>Open Season</b>	Column 5 <b>Type of Wildlife</b>	Column 6 <b>ROA</b>
359	Kootenay	4-1	B	Sept 1-Nov 30	adult mountain goat	1-50
360	Kootenay	4-1	C	Sept 1-Nov 30	adult mountain goat	1-50
361	Kootenay	4-1	D	Sept 1-Nov 30	adult mountain goat	1-50
362	Kootenay	4-1	E	Sept 1-Nov 30	adult mountain goat	1-50
363	Kootenay	4-1	F	Sept 1-Nov 30	adult mountain goat	1-50
364	Kootenay	4-2	A	Sept 1-Nov 30	adult mountain goat	1-50
365	Kootenay	4-6	A	Sept 1-Nov 30	adult mountain goat	1-50
366	Kootenay	4-16	A	Sept 1-Nov 30	adult mountain goat	1-50
367	Kootenay	4-16	B	Sept 1-Nov 30	adult mountain goat	1-50
368	Kootenay	4-16	C	Sept 1-Nov 30	adult mountain goat	1-50
369	Kootenay	4-17	A	Sept 1-Nov 30	adult mountain goat	1-50
370	Kootenay	4-17	B	Sept 1-Nov 30	adult mountain goat	1-50
371	Kootenay	4-18	A	Sept 1-Nov 30	adult mountain goat	1-50
372	Kootenay	4-19	A	Sept 1-Nov 30	adult mountain goat	1-50
373	Kootenay	4-19	B	Sept 1-Nov 30	adult mountain goat	1-100
374	Kootenay	4-20	A	Sept 1-Nov 30	adult mountain goat	1-50
375	Kootenay	4-20	B	Sept 1-Nov 30	adult mountain goat	1-50
376	Kootenay	4-20	C	Sept 1-Nov 30	adult mountain goat	1-50
377	Kootenay	4-20	D	Sept 1-Nov 30	adult mountain goat	1-50
378	Kootenay	4-21	A	Sept 1-Nov 30	adult mountain goat	1-50

Item	Column 1 <b>Limited Entry Hunting Area</b>	Column 2 <b>M.U.</b>	Column 3 <b>Zone</b>	Column 4 <b>Open Season</b>	Column 5 <b>Type of Wildlife</b>	Column 6 <b>ROA</b>
379	Kootenay	4-21	B	Sept 1-Nov 30	adult mountain goat	1-100
380	Kootenay	4-22	A	Sept 1-Nov 30	adult mountain goat	1-100
381	Kootenay	4-22	B	Sept 1-Nov 30	adult mountain goat	1-100
382	Kootenay	4-22	C	Sept 1-Nov 30	adult mountain goat	1-100
383	Kootenay	4-22	D	Sept 1-Nov 30	adult mountain goat	1-50
384	Kootenay	4-22	E	Sept 1-Nov 30	adult mountain goat	1-100
385	Kootenay	4-22	F	Sept 1-Nov 30	adult mountain goat	1-100
386	Kootenay	4-22	G	Sept 1-Nov 30	adult mountain goat	1-50
387	Kootenay	4-23	A	Sept 1-Nov 30	adult mountain goat	1-100
388	Kootenay	4-23	B	Sept 1-Nov 30	adult mountain goat	1-200
389	Kootenay	4-23	C	Sept 1-Nov 30	adult mountain goat	1-50
390	Kootenay	4-23	E	Sept 1-Nov 30	adult mountain goat	1-50
391	Kootenay	4-23	F	Sept 1-Nov 30	adult mountain goat	1-50
392	Kootenay	4-23	G	Sept 1-Nov 30	adult mountain goat	1-100
393	Kootenay	4-23	J	Sept 1-Nov 30	adult mountain goat	1-100
394	Kootenay	4-23	K	Sept 10-Nov 30	adult mountain goat	1-20
395	Kootenay	4-24	A	Sept 1-Nov 30	adult mountain goat	1-100
396	Kootenay	4-24	B	Sept 1-Nov 30	adult mountain goat	1-200
397	Kootenay	4-24	C	Sept 1-Nov 30	adult mountain goat	1-150
398	Kootenay	4-24	D	Sept 1-Nov 30	adult mountain goat	1-100
399	Kootenay	4-24	E	Sept 1-Nov 30	adult mountain goat	1-50

Item	Column 1 <b>Limited Entry Hunting Area</b>	Column 2 <b>M.U.</b>	Column 3 <b>Zone</b>	Column 4 <b>Open Season</b>	Column 5 <b>Type of Wildlife</b>	Column 6 <b>ROA</b>
400	Kootenay	4-24	F	Sept 1-Nov 30	adult mountain goat	1-50
401	Kootenay	4-25	A	Sept 1-Nov 30	adult mountain goat	1-100
402	Kootenay	4-25	B	Sept 1-Nov 30	adult mountain goat	1-100
403	Kootenay	4-25	C	Sept 1-Nov 30	adult mountain goat	1-200
404	Kootenay	4-25	D	Sept 1-Nov 30	adult mountain goat	1-100
405	Kootenay	4-25	E	Sept 1-Nov 30	adult mountain goat	1-100
406	Kootenay	4-26	A	Sept 1-Nov 30	adult mountain goat	1-50
407	Kootenay	4-26	B	Sept 1-Nov 30	adult mountain goat	1-100
408	Kootenay	4-26	C	Sept 1-Nov 30	adult mountain goat	1-150
409	Kootenay	4-26	D	Sept 1-Nov 30	adult mountain goat	1-100
410	Kootenay	4-27	A	Sept 1-Nov 30	adult mountain goat	1-50
411	Kootenay	4-27	B	Sept 1-Nov 30	adult mountain goat	1-50
412	Kootenay	4-27	C	Sept 1-Nov 30	adult mountain goat	1-50
413	Kootenay	4-31	A	Sept 1-Nov 30	adult mountain goat	1-50
414	Kootenay	4-31	B	Sept 1-Nov 30	adult mountain goat	1-50
415	Kootenay	4-32	A	Sept 1-Nov 30	adult mountain goat	1-50
416	Kootenay	4-33		Sept 1-Nov 30	adult mountain goat	1-100
417	Kootenay	4-34	A	Sept 1-Nov 30	adult mountain goat	1-100
418	Kootenay	4-34	B	Sept 1-Nov 30	adult mountain goat	1-100
419	Kootenay	4-34	C	Sept 1-Nov 30	adult mountain goat	1-100
420	Kootenay	4-35	A	Sept 1-Nov 30	adult mountain goat	1-100

Item	Column 1 <b>Limited Entry Hunting Area</b>	Column 2 <b>M.U.</b>	Column 3 <b>Zone</b>	Column 4 <b>Open Season</b>	Column 5 <b>Type of Wildlife</b>	Column 6 <b>ROA</b>
421	Kootenay	4-35	B	Sept 1-Nov 30	adult mountain goat	1-150
422	Kootenay	4-36	A	Sept 1-Nov 30	adult mountain goat	1-100
423	Kootenay	4-36	B	Sept 1-Nov 30	adult mountain goat	1-100
424	Kootenay	4-37	A	Sept 1-Nov 30	adult mountain goat	1-100
425	Kootenay	4-38	A	Sept 1-Nov 30	adult mountain goat	1-50
426	Kootenay	4-38	B	Sept 1-Nov 30	adult mountain goat	1-100
427	Kootenay	4-38	C	Sept 1-Nov 30	adult mountain goat	1-150
428	Flathead South	4-1	A	Sept 10-Oct 25	full curl bighorn ram mountain sheep	1-15
429	Flathead North	4-1	B	Sept 10-Oct 25	full curl bighorn ram mountain sheep	1-15
430	Phillips Creek	4-2	A	Nov 1-Nov 10	full curl bighorn ram mountain sheep	1-5
431	Phillips Creek	4-2	A	Nov 11-Nov 20	full curl bighorn ram mountain sheep	1-5
432	Galton	4-2	B	Sept 10-Oct 25	full curl bighorn ram mountain sheep	1-15
433	Wigwam	4-2	C	Sept 10-Oct 25	full curl bighorn ram mountain sheep	1-20
434	Coyote West	4-21	A	Sept 10-Oct 25	full curl bighorn ram mountain sheep	1-15

Item	Column 1 <b>Limited Entry Hunting Area</b>	Column 2 <b>M.U.</b>	Column 3 <b>Zone</b>	Column 4 <b>Open Season</b>	Column 5 <b>Type of Wildlife</b>	Column 6 <b>ROA</b>
435	Coyote East	4-21	B	Sept 10-Oct 25	full curl bighorn ram mountain sheep	1-15
436	Lizard	4-22	A	Sept 10-Oct 25	full curl bighorn ram mountain sheep	1-15
437	Bull River	4-22	B	Sept 10-Oct 25	full curl bighorn ram mountain sheep	1-15
438	Elk Valley East	4-23	A	Sept 10-Oct 25	full curl bighorn ram mountain sheep	1-50
439	Elk Valley East	4-23	B	Sept 10-Oct 25	full curl bighorn ram mountain sheep	1-75
440	Upper East	4-23	C	Sept 10-Oct 25	full curl bighorn ram mountain sheep	1-15
441	Elk Valley West	4-23	D	Sept 10-Oct 25	full curl bighorn ram mountain sheep	1-15
442	Elk Valley West	4-23	E	Sept 10-Oct 25	full curl bighorn ram mountain sheep	1-15
443	Whiteswan	4-24	A	Sept 10-Oct 25	full curl bighorn ram mountain sheep	1-15
444	Columbia Lake	4-25	A	Sept 10-Oct 25	full curl bighorn ram mountain sheep	1-15

Item	Column 1 <b>Limited Entry Hunting Area</b>	Column 2 <b>M.U.</b>	Column 3 <b>Zone</b>	Column 4 <b>Open Season</b>	Column 5 <b>Type of Wildlife</b>	Column 6 <b>ROA</b>
445	Mt. Assiniboine Park	4-25	F	Oct 1-Oct 20	full curl bighorn ram mountain sheep	1-5
446	Mt. Assiniboine Park	4-25	F	Oct 21-Oct 31	full curl bighorn ram mountain sheep	1-5
447	Radium North	4-35	A	Sept 10-Oct 25	full curl bighorn ram mountain sheep	1-15
448	Kootenay	4-2		Dec 1-Dec 31	turkey	1-100
449	Kootenay	4-3		Dec 1-Dec 31	turkey	1-100
450	Kootenay	4-4		Dec 1-Dec 31	turkey	1-100
451	Kootenay	4-5		Dec 1-Dec 31	turkey	1-100
452	Kootenay	4-6		Dec 1-Dec 31	turkey	1-100
453	Kootenay	4-7		Dec 1-Dec 31	turkey	1-100
454	Kootenay	4-8		Dec 1-Dec 31	turkey	1-100
455	Kootenay	4-9		Dec 1-Dec 31	turkey	1-100
456	Kootenay	4-14		Dec 1-Dec 31	turkey	1-100
457	Kootenay	4-15		Dec 1-Dec 31	turkey	1-100
458	Kootenay	4-16		Dec 1-Dec 31	turkey	1-100
459	Kootenay	4-17		Dec 1-Dec 31	turkey	1-100
460	Kootenay	4-18		Dec 1-Dec 31	turkey	1-100
461	Kootenay	4-19		Dec 1-Dec 31	turkey	1-100
462	Kootenay	4-20		Dec 1-Dec 31	turkey	1-100
463	Kootenay	4-21		Dec 1-Dec 31	turkey	1-100
464	Kootenay	4-22		Dec 1-Dec 31	turkey	1-100

Item	Column 1 <b>Limited Entry Hunting Area</b>	Column 2 <b>M.U.</b>	Column 3 <b>Zone</b>	Column 4 <b>Open Season</b>	Column 5 <b>Type of Wildlife</b>	Column 6 <b>ROA</b>
465	Kootenay	4-23		Dec 1-Dec 31	turkey	1-100
466	Kootenay	4-24		Dec 1-Dec 31	turkey	1-100
467	Kootenay	4-25		Dec 1-Dec 31	turkey	1-100
468	Kootenay	4-26		Dec 1-Dec 31	turkey	1-100
469	Kootenay	4-27		Dec 1-Dec 31	turkey	1-100
470	Kootenay	4-34		Dec 1-Dec 31	turkey	1-100
471	Kootenay	4-35		Dec 1-Dec 31	turkey	1-100
472*	Cariboo	5-1		Oct 1-Nov 30	antlerless mule (black-tailed) deer	1-200
473*	Cariboo	5-2		Oct 1-Nov 30	antlerless mule (black-tailed) deer	1-400
474*	Cariboo	5-3		Oct 1-Nov 30	antlerless mule (black-tailed) deer	1-200
475*	Cariboo	5-13		Oct 1-Nov 30	antlerless mule (black-tailed) deer	1-200
476*	Cariboo	5-14		Oct 1-Nov 30	antlerless mule (black-tailed) deer	1-400
477	Cariboo	5-1		Oct 1-Oct 31	antlerless mule (black-tailed) deer	1-150
478	Cariboo	5-2	A	Oct 1-Oct 31	antlerless mule (black-tailed) deer	1-150
479	Cariboo	5-2	C	Oct 1-Oct 31	antlerless mule (black-tailed) deer	1-250
480	Cariboo	5-2	D	Oct 1-Oct 31	antlerless mule (black-tailed) deer	1-300
481	Cariboo	5-3	A	Oct 1-Oct 31	antlerless mule (black-tailed) deer	1-300

Item	Column 1 <b>Limited Entry Hunting Area</b>	Column 2 <b>M.U.</b>	Column 3 <b>Zone</b>	Column 4 <b>Open Season</b>	Column 5 <b>Type of Wildlife</b>	Column 6 <b>ROA</b>
482	Cariboo	5-3	B	Oct 1-Oct 31	antlerless mule (black-tailed) deer	1-300
483	Cariboo	5-13	B	Oct 1-Oct 31	antlerless mule (black-tailed) deer	1-300
484	Cariboo	5-14	A	Oct 1-Oct 31	antlerless mule (black-tailed) deer	1-400
485	Cariboo	5-14	B	Oct 1-Oct 31	antlerless mule (black-tailed) deer	1-200
486	Cariboo	5-1		Nov 1-Nov 30	antlerless mule (black-tailed) deer	1-300
487	Cariboo	5-2	A	Nov 1-Nov 30	antlerless mule (black-tailed) deer	1-300
488	Cariboo	5-2	C	Nov 1-Nov 30	antlerless mule (black-tailed) deer	1-500
489	Cariboo	5-2	D	Nov 1-Nov 30	antlerless mule (black-tailed) deer	1-600
490	Cariboo	5-3	A	Nov 1-Nov 30	antlerless mule (black-tailed) deer	1-600
491	Cariboo	5-3	B	Nov 1-Nov 30	antlerless mule (black-tailed) deer	1-600
492	Cariboo	5-8		Nov 1-Nov 30	antlerless mule (black-tailed) deer	1-50
493	Cariboo	5-13	B	Nov 1-Nov 30	antlerless mule (black-tailed) deer	1-600
494	Cariboo	5-14	A	Nov 1-Nov 30	antlerless mule (black-tailed) deer	1-800
495	Cariboo	5-14	B	Nov 1-Nov 30	antlerless mule (black-tailed) deer	1-400

Item	Column 1 <b>Limited Entry Hunting Area</b>	Column 2 <b>M.U.</b>	Column 3 <b>Zone</b>	Column 4 <b>Open Season</b>	Column 5 <b>Type of Wildlife</b>	Column 6 <b>ROA</b>
496	Cariboo	5-2	A	Nov 15-Dec 14	antlerless elk	1-50
497	Cariboo	5-2	A	Dec 15-Jan 14	antlerless elk	1-50
498	Cariboo	5-2	A	Jan 15-Feb 14	antlerless elk	1-50
499	Cariboo	5-2	A	Nov 15-Dec 14	bull elk	1-50
500	Cariboo	5-2	A	Dec 15-Jan 14	bull elk	1-50
501	Cariboo	5-2	A	Jan 15-Feb 14	bull elk	1-50
502	Cariboo	5-1		Sept 10-Sept 30	bull moose	1-100
503	Cariboo	5-1		Oct 1-Oct 14	bull moose	1-60
504	Cariboo	5-1		Oct 15-Oct 31	bull moose	1-100
505	Cariboo	5-1		Nov 1-Nov 15	bull moose	1-100
506	Cariboo	5-2	A	Sept 10-Sept 30	bull moose	1-100
507	Cariboo	5-2	A	Oct 1-Oct 14	bull moose	1-60
508	Cariboo	5-2	A	Oct 15-Oct 31	bull moose	1-100
509	Cariboo	5-2	A	Nov 1-Nov 15	bull moose	1-100
510	Cariboo	5-2	B	Sept 10-Sept 30	bull moose	1-150
511	Cariboo	5-2	B	Oct 1-Oct 14	bull moose	1-90
512	Cariboo	5-2	B	Oct 15-Oct 31	bull moose	1-150
513	Cariboo	5-2	B	Nov 1-Nov 15	bull moose	1-150
514	Cariboo	5-2	C	Sept 10-Sept 30	bull moose	1-150
515	Cariboo	5-2	C	Oct 1-Oct 14	bull moose	1-90
516	Cariboo	5-2	C	Oct 15-Oct 31	bull moose	1-150
517	Cariboo	5-2	C	Nov 1-Nov 15	bull moose	1-150
518	Cariboo	5-2	D	Sept 10-Sept 30	bull moose	1-150

Item	Column 1 <b>Limited Entry Hunting Area</b>	Column 2 <b>M.U.</b>	Column 3 <b>Zone</b>	Column 4 <b>Open Season</b>	Column 5 <b>Type of Wildlife</b>	Column 6 <b>ROA</b>
519	Cariboo	5-2	D	Oct 1-Oct 14	bull moose	1-90
520	Cariboo	5-2	D	Oct 15-Oct 31	bull moose	1-150
521	Cariboo	5-2	D	Nov 1-Nov 15	bull moose	1-150
522	Cariboo	5-3		Oct 1-Oct 14	bull moose	1-60
523	Cariboo	5-3		Oct 15-Oct 31	bull moose	1-100
524	Cariboo	5-3		Nov 1-Nov 15	bull moose	1-100
525	Cariboo	5-4	A	Oct 1-Oct 14	bull moose	1-30
526	Cariboo	5-4	A	Oct 15-Oct 31	bull moose	1-50
527	Cariboo	5-4	A	Nov 1-Nov 15	bull moose	1-50
528	Cariboo	5-4	D	Oct 1-Oct 14	bull moose	1-90
529	Cariboo	5-4	D	Oct 15-Oct 31	bull moose	1-150
530	Cariboo	5-4	D	Nov 1-Nov 15	bull moose	1-150
531	Cariboo	5-5		Oct 1-Oct 14	bull moose	1-50
532	Cariboo	5-5		Oct 15-Oct 31	bull moose	1-30
533	Cariboo	5-5		Nov 1-Nov 15	bull moose	1-50
534	Cariboo	5-6		Sept 10-Sept 30	bull moose	1-50
535	Cariboo	5-6		Oct 1-Oct 14	bull moose	1-30
536	Cariboo	5-6		Oct 15-Oct 31	bull moose	1-50
537	Cariboo	5-6		Nov 1-Nov 15	bull moose	1-50
538	Cariboo	5-10		Sept 10-Sept 30	bull moose	1-50
539	Cariboo	5-10		Oct 1-Oct 14	bull moose	1-30
540	Cariboo	5-10		Oct 15-Oct 31	bull moose	1-50
541	Cariboo	5-10		Nov 1-Nov 15	bull moose	1-50

Item	Column 1 <b>Limited Entry Hunting Area</b>	Column 2 <b>M.U.</b>	Column 3 <b>Zone</b>	Column 4 <b>Open Season</b>	Column 5 <b>Type of Wildlife</b>	Column 6 <b>ROA</b>
542	Cariboo	5-11	A	Sept 10-Sept 30	bull moose	1-50
543	Cariboo	5-11	A	Oct 1-Oct 14	bull moose	1-30
544	Cariboo	5-11	A	Oct 15-Oct 31	bull moose	1-50
545	Cariboo	5-11	A	Nov 1-Nov 15	bull moose	1-50
546	Cariboo	5-12	A	Oct 1-Oct 14	bull moose	1-90
547	Cariboo	5-12	A	Oct 15-Oct 31	bull moose	1-150
548	Cariboo	5-12	A	Nov 1-Nov 15	bull moose	1-150
549	Cariboo	5-12	B	Sept 10-Sept 30	bull moose	1-100
550	Cariboo	5-12	B	Oct 1-Oct 14	bull moose	1-60
551	Cariboo	5-12	B	Oct 15-Oct 31	bull moose	1-100
552	Cariboo	5-12	B	Nov 1-Nov 15	bull moose	1-100
553	Cariboo	5-13	A	Oct 1-Oct 14	bull moose	1-90
554	Cariboo	5-13	A	Oct 15-Oct 31	bull moose	1-90
555	Cariboo	5-13	A	Nov 1-Nov 15	bull moose	1-90
556	Cariboo	5-13	B	Sept 10-Sept 30	bull moose	1-150
557	Cariboo	5-13	B	Oct 1-Oct 14	bull moose	1-90
558	Cariboo	5-13	B	Oct 15-Oct 31	bull moose	1-150
559	Cariboo	5-13	B	Nov 1-Nov 15	bull moose	1-150
560	Cariboo	5-13	C	Sept 10-Sept 30	bull moose	1-150
561	Cariboo	5-13	C	Oct 1-Oct 14	bull moose	1-90
562	Cariboo	5-13	C	Oct 15-Oct 31	bull moose	1-90
563	Cariboo	5-13	C	Nov 1-Nov 15	bull moose	1-90
564	Cariboo	5-14		Oct 1-Oct 14	bull moose	1-100

Item	Column 1 <b>Limited Entry Hunting Area</b>	Column 2 <b>M.U.</b>	Column 3 <b>Zone</b>	Column 4 <b>Open Season</b>	Column 5 <b>Type of Wildlife</b>	Column 6 <b>ROA</b>
565	Cariboo	5-14		Oct 15-Oct 31	bull moose	1-100
566	Cariboo	5-14		Nov 1-Nov 15	bull moose	1-100
567	Cariboo	5-15	A	Sept 10-Sept 30	bull moose	1-100
568	Cariboo	5-15	A	Oct 1-Oct 14	bull moose	1-60
569	Cariboo	5-15	A	Oct 15-Oct 31	bull moose	1-100
570	Cariboo	5-15	A	Nov 1-Nov 15	bull moose	1-100
571	Cariboo	5-15	B	Sept 10-Sept 30	bull moose	1-50
572	Cariboo	5-15	B	Oct 1-Oct 14	bull moose	1-30
573	Cariboo	5-15	B	Oct 15-Oct 31	bull moose	1-50
574	Cariboo	5-15	B	Nov 1-Nov 15	bull moose	1-50
575	Cariboo	5-15	C	Sept 10-Sept 30	bull moose	1-100
576	Cariboo	5-15	C	Oct 1-Oct 14	bull moose	1-60
577	Cariboo	5-15	C	Oct 15-Oct 31	bull moose	1-100
578	Cariboo	5-15	C	Nov 1-Nov 15	bull moose	1-100
579	Cariboo	5-15	D	Sept 10-Sept 30	bull moose	1-100
580	Cariboo	5-15	D	Oct 1-Oct 14	bull moose	1-60
581	Cariboo	5-15	D	Oct 15-Oct 31	bull moose	1-100
582	Cariboo	5-15	D	Nov 1-Nov 15	bull moose	1-100
583	Cariboo	5-15	A	Nov 1-Dec 10	antlerless moose	1-100
584	Cariboo	5-15	B	Nov 1-Dec 10	antlerless moose	1-100
585	Cariboo	5-15	C	Nov 1-Dec 10	antlerless moose	1-100
586	Cariboo	5-15	D	Nov 1-Dec 10	antlerless moose	1-100
587	Yohetta	5-4	B	Sept 1-Oct 31	adult mountain goat	1-15

Item	Column 1 <b>Limited Entry Hunting Area</b>	Column 2 <b>M.U.</b>	Column 3 <b>Zone</b>	Column 4 <b>Open Season</b>	Column 5 <b>Type of Wildlife</b>	Column 6 <b>ROA</b>
588	Yohetta	5-4	E	Sept 1-Oct 31	adult mountain goat	1-10
589	Yohetta	5-4	F	Sept 1-Oct 31	adult mountain goat	1-15
590	Yohetta	5-4	H	Sept 1-Oct 31	adult mountain goat	1-10
591	Yohetta	5-4	J	Sept 1-Oct 31	adult mountain goat	5-20
592	Ottarasko Mountain	5-5	A	Sept 1-Oct 31	adult mountain goat	1-15
593	Niut Mountain	5-5	B	Sept 1-Oct 31	adult mountain goat	1-15
594	Perkins Peak	5-6, 5-5	A	Sept 1-Oct 31	adult mountain goat	1-15
595	Cherry Creek	5-6, 5-5	B	Sept 1-Oct 31	adult mountain goat	1-15
596	Itcha-Ilgachuz	5-12	A	Sept 1-Oct 31	adult mountain goat	1-50
597	Boss-Deception	5-15	A	Sept 1-Oct 31	adult mountain goat	1-10
598	Eureka	5-15	B	Sept 1-Oct 31	adult mountain goat	1-10
599	Cariboo	5-15	E	Sept 1-Oct 31	adult mountain goat	1-50
600	Taseko Mountain	5-4	C	Sept 10-Oct 20	full curl bighorn ram mountain sheep	1-10
601	Upper Skeena	6-17, 6-18, 6-20	A	Aug 15-Oct 15	5 pt. bull caribou	1-30
602	North Stikine	6-19, 6-20	A	Aug 15-Oct 15	5 pt. bull caribou	1-30
603	Tseneglode	6-19, 6-22, 6-23	B	Aug 15-Oct 15	5 pt. bull caribou	1-63
604	Spatsizi	6-20, 6-18	B	Aug 15-Aug 31	5 pt. bull caribou	25-200
605	Spatsizi	6-20, 6-18	B	Sept 1-Sept 15	5 pt. bull caribou	25-200
606	Spatsizi	6-20, 6-18	B	Sept 16-Sept 30	5 pt. bull caribou	25-200

Item	Column 1 <b>Limited Entry Hunting Area</b>	Column 2 <b>M.U.</b>	Column 3 <b>Zone</b>	Column 4 <b>Open Season</b>	Column 5 <b>Type of Wildlife</b>	Column 6 <b>ROA</b>
607	Spatsizi	6-20, 6-18	B	Oct 1-Oct 15	5 pt. bull caribou	25-200
608	Level	6-22, 6-24, 6-26	A	Aug 15-Oct 15	5 pt. bull caribou	1-180
609	Horserranch	6-23	A	Aug 15-Oct 15	5 pt. bull caribou	1-65
610	Little Rancheria	6-24, 6-23, 6-25	A	Aug 15-Oct 15	5 pt. bull caribou	1-220
611	Atlin	6-25, 6-26	B	Aug 15-Oct 15	5 pt. bull caribou	1-50
612	Swan Lake	6-25, 6-24	C	Aug 15-Oct 15	5 pt. bull caribou	1-78
613	Kawdy	6-25, 6-22, 6-24, 6-26	D	Aug 15-Oct 15	5 pt. bull caribou	1-276
614	Skeena	6-4		Nov 1-Nov 15	antlerless mule (black-tailed) deer	1-75
615	François Lake	6-4	A	Dec 1-Dec 15	antlerless mule (black-tailed) deer	1-50
616	François Lake	6-4	A	Dec 16-Dec 31	antlerless mule (black-tailed) deer	1-50
617	François Lake	6-4	A	Jan 1-Jan 15	antlerless mule (black-tailed) deer	1-50
618	François Lake	6-4	A	Jan 16-Jan 31	antlerless mule (black-tailed) deer	1-50
619	François Lake	6-4	A	Feb 1-Feb 15	antlerless mule (black-tailed) deer	1-50
620	François Lake	6-4	A	Feb 16-Feb 28	antlerless mule (black-tailed) deer	1-50
621	Skeena	6-5, 6-6		Nov 1-Nov 15	antlerless mule (black-tailed) deer	1-50

Item	Column 1 <b>Limited Entry Hunting Area</b>	Column 2 <b>M.U.</b>	Column 3 <b>Zone</b>	Column 4 <b>Open Season</b>	Column 5 <b>Type of Wildlife</b>	Column 6 <b>ROA</b>
622	Skeena	6-8		Nov 1-Nov 15	antlerless mule (black-tailed) deer	1-25
623	Skeena	6-9		Nov 1-Nov 15	antlerless mule (black-tailed) deer	1-25
624	Smithers	6-1		Oct 1-Oct 19	bull moose	1-150
625	Smithers	6-10	B	Sept 1-Sept 9 & Nov 16-Nov 20	bull moose	1-150
626	Smithers	6-30	A	Sept 1-Sept 9 & Nov 16-Nov 20	bull moose	1-150
627	Smithers	6-8, 6-9		Sept 1-Sept 9 & Nov 16-Nov 20	bull moose	1-150
628	Smithers	6-4, 6-5, 6-6		Sept 1-Sept 9 & Nov 16-Nov 20	bull moose	1-150
629	Smithers	6-2		Oct 1-Oct 19	bull moose	1-150
630	Smithers	6-4		Oct 1-Oct 19	bull moose	1-150
631	Smithers	6-3, 6-10, 6-11	A	Oct 1-Oct 19	bull moose	1-150
632	Smithers	6-5		Oct 1-Oct 19	bull moose	1-150
633	Smithers	6-6		Oct 1-Oct 19	bull moose	1-150
634	Smithers	6-7		Oct 1-Oct 19	bull moose	1-150
635	Smithers	6-8		Oct 1-Oct 19	bull moose	1-150
636	Smithers	6-9		Oct 1-Oct 19	bull moose	1-150
637	Smithers	6-15	A	Oct 1-Oct 19	bull moose	1-150
638	Smithers	6-1		Sept 10-Oct 19 & Oct 23-Nov 15	bull moose	50-150
639	Smithers	6-2	A	Sept 10-Oct 19 & Oct 23-Nov 15	bull moose	1-100
640	Smithers	6-2	B	Sept 1-Oct 19	bull moose	1-100
641	Smithers	6-3, 6-11	A	Sept 10-Nov 15	bull moose	1-150
642	Smithers	6-4		Sept 10-Sept 24	bull moose	1-150

Item	Column 1 <b>Limited Entry Hunting Area</b>	Column 2 <b>M.U.</b>	Column 3 <b>Zone</b>	Column 4 <b>Open Season</b>	Column 5 <b>Type of Wildlife</b>	Column 6 <b>ROA</b>
643	Smithers	6-4		Sept 25-Oct 19	bull moose	1-100
644	Smithers	6-4		Oct 20-Nov 15	bull moose	1-150
645	Smithers	6-5		Sept 10-Sept 24	bull moose	1-50
646	Smithers	6-5		Sept 25-Oct 19	bull moose	1-50
647	Smithers	6-5		Oct 20-Nov 15	bull moose	1-50
648	Smithers	6-6		Sept 10-Sept 24	bull moose	1-50
649	Smithers	6-6		Sept 25-Oct 19	bull moose	1-50
650	Smithers	6-6		Oct 20-Nov 15	bull moose	1-50
651	Smithers	6-7		Sept 10-Nov 15	bull moose	1-100
652	Smithers	6-8		Sept 10-Sept 24	bull moose	1-150
653	Smithers	6-8		Sept 25-Oct 19	bull moose	1-150
654	Smithers	6-8		Oct 20-Nov 15	bull moose	1-150
655	Smithers	6-9		Sept 10-Sept 24	bull moose	1-150
656	Smithers	6-9		Sept 25-Oct 19	bull moose	1-200
657	Smithers	6-9		Oct 20-Nov 15	bull moose	1-200
658	Smithers	6-3, 6-10, 6-11	A	Sept 10-Nov 15	bull moose	1-150
659	Smithers	6-15	A	Sept 10-Nov 15	bull moose	1-50
660	Stikine	6-19	A	Sept 1-Sept 14	bull moose	1-55
661	Stikine	6-19	A	Sept 15-Sept 30	bull moose	1-55
662	Stikine	6-19	A	Oct 1-Oct 15	bull moose	1-55
663	Jade Boulder	6-23, 6-19	C	Sept 10-Sept 24	bull moose	1-16
664	Jade Boulder	6-23, 6-19	C	Sept 25-Oct 10	bull moose	1-16
665	Spatsizi	6-20	A	Aug 15-Oct 15	bull moose	50-150

Item	Column 1 <b>Limited Entry Hunting Area</b>	Column 2 <b>M.U.</b>	Column 3 <b>Zone</b>	Column 4 <b>Open Season</b>	Column 5 <b>Type of Wildlife</b>	Column 6 <b>ROA</b>
666	Klappan	6-20, 6-17, 6-18	B	Sept 15-Sept 30	bull moose	1-75
667	Klappan	6-20, 6-17, 6-18	B	Oct 1-Oct 15	bull moose	1-75
668	Klastline	6-21	A	Sept 10-Sept 24	bull moose	1-35
669	Klastline	6-21	A	Sept 25-Oct 10	bull moose	1-35
670	Lower Stikine	6-22, 6-19, 6-21	A	Sept 10-Sept 24	bull moose	1-45
671	Lower Stikine	6-22, 6-19, 6-21	A	Sept 25-Oct 10	bull moose	1-45
672	Dease River North	6-23, 6-24	A	Sept 10-Sept 24	bull moose	1-16
673	Dease River North	6-23, 6-24	A	Sept 25-Oct 10	bull moose	1-16
674	Dease River Central	6-23	B	Sept 10-Sept 24	bull moose	1-16
675	Dease River Central	6-23	B	Sept 25-Oct 10	bull moose	1-16
676	Dease River South	6-24, 6-23	B	Sept 10-Sept 24	bull moose	1-16
677	Dease River South	6-24, 6-23	B	Sept 25-Oct 10	bull moose	1-16
678	Cassiar	6-24, 6-23	A	Sept 10-Sept 24	bull moose	1-26
679	Cassiar	6-24, 6-23	A	Sept 25-Oct 10	bull moose	1-26
680	Dease Lake	6-24	C	Sept 10-Sept 24	bull moose	1-51
681	Dease Lake	6-24	C	Sept 25-Oct 10	bull moose	1-52
682	Gladys	6-25	A	Sept 10-Sept 24	bull moose	1-42
683	Gladys	6-25	A	Sept 25-Oct 10	bull moose	1-17
684	Gladys	6-25	A	Nov 1-Nov 7	bull moose	1-25
685	Surprise	6-25	B	Sept 10-Sept 24	bull moose	1-37

Item	Column 1 <b>Limited Entry Hunting Area</b>	Column 2 <b>M.U.</b>	Column 3 <b>Zone</b>	Column 4 <b>Open Season</b>	Column 5 <b>Type of Wildlife</b>	Column 6 <b>ROA</b>
686	Surprise	6-25	B	Sept 25-Oct 10	bull moose	1-15
687	Surprise	6-25	B	Nov 1-Nov 7	bull moose	1-22
688	O'Donnel-Kuthai	6-25, 6-26	C	Sept 10-Sept 24	bull moose	1-21
689	O'Donnel-Kuthai	6-25, 6-26	C	Sept 25-Oct 10	bull moose	1-8
690	O'Donnel-Kuthai	6-25, 6-26	C	Nov 1-Nov 7	bull moose	1-13
691	Teslin	6-25	D	Aug 23-Sept 9	bull moose	1-90
692	Teslin	6-25	D	Sept 10-Sept 24	bull moose	1-90
693	Teslin	6-25	D	Sept 25-Oct 10	bull moose	1-90
694	Teslin	6-25	E	Aug 23-Sept 9	bull moose	1-88
695	Teslin	6-25	E	Sept 10-Sept 24	bull moose	1-88
696	Teslin	6-25	E	Sept 25-Oct 10	bull moose	1-88
697	Smithers	6-30	A	Sept 10-Sept 24	bull moose	1-100
698	Smithers	6-30	A	Sept 25-Oct 19	bull moose	1-100
699	Smithers	6-30	A	Oct 20-Nov 15	bull moose	1-100
700	Tweedsmuir	6-2	B	Sept 1-Oct 15	adult mountain goat	1-50
701	Skeena	6-8	A	Aug 1-Feb 28	adult mountain goat	1-50
702	Skeena	6-8	B	Aug 1-Feb 28	adult mountain goat	1-25
703	Skeena	6-8	C	Aug 1-Feb 28	adult mountain goat	1-50
704	Skeena	6-8	D	Aug 1-Feb 28	adult mountain goat	1-25
705	Skeena	6-8	E	Aug 1-Feb 28	adult mountain goat	1-25
706	Babine Mountain	6-8	F	Sept 1-Oct 31	adult mountain goat	1-100
707	Skeena	6-9	A	Aug 1-Feb 28	adult mountain goat	1-50

Item	Column 1 <b>Limited Entry Hunting Area</b>	Column 2 <b>M.U.</b>	Column 3 <b>Zone</b>	Column 4 <b>Open Season</b>	Column 5 <b>Type of Wildlife</b>	Column 6 <b>ROA</b>
708	Skeena	6-9	B	Aug 1-Feb 28	adult mountain goat	1-100
709	Skeena	6-9	C	Aug 1-Feb 28	adult mountain goat	1-50
710	Skeena	6-4, 6-9	E	Aug 1-Feb 28	adult mountain goat	1-50
711	Skeena	6-9	I	Aug 1-Feb 28	adult mountain goat	1-50
712	Skeena	6-9	J	Aug 1-Feb 28	adult mountain goat	1-50
713	Skeena	6-9	K	Aug 1-Feb 28	adult mountain goat	1-50
714	Skeena	6-9	M	Aug 1-Feb 28	adult mountain goat	1-50
715	Skeena	6-9	N	Aug 1-Feb 28	adult mountain goat	1-50
716	Skeena	6-3, 6-9	O	Aug 1-Feb 28	adult mountain goat	1-50
717	Skeena	6-3, 6-9	P	Aug 1-Feb 28	adult mountain goat	1-50
718	Skeena	6-9	Q	Aug 1-Feb 28	adult mountain goat	1-50
719	Skeena	6-9	S	Aug 1-Sept 30	adult mountain goat	1-100
720	Skeena	6-9	T	Aug 1-Feb 28	adult mountain goat	1-50
721	Skeena	6-10	A	Aug 1-Feb 28	adult mountain goat	1-25
722	Skeena	6-10	B	Aug 1-Feb 28	adult mountain goat	1-25
723	Skeena	6-15	A	Aug 1-Feb 28	adult mountain goat	1-100
724	Skeena	6-15	B	Aug 1-Feb 28	adult mountain goat	1-50
725	Skeena	6-15	G	Aug 1-Feb 28	adult mountain goat	1-25
726	Skeena	6-15	H	Aug 1-Feb 28	adult mountain goat	1-25
727	Skeena	6-15	I	Aug 1-Feb 28	adult mountain goat	1-50
728	Skeena	6-15	J	Aug 1-Feb 28	adult mountain goat	1-50

Item	Column 1 <b>Limited Entry Hunting Area</b>	Column 2 <b>M.U.</b>	Column 3 <b>Zone</b>	Column 4 <b>Open Season</b>	Column 5 <b>Type of Wildlife</b>	Column 6 <b>ROA</b>
729	Skeena	6-15	K	Aug 1-Feb 28	adult mountain goat	1-25
730	Spatsizi	6-19	A	Aug 1-Oct 15	adult mountain goat	1-25
731	Spatsizi	6-20	A	Aug 1-Oct 15	adult mountain goat	1-50
732	Spatsizi	6-20	B	Aug 1-Oct 15	adult mountain goat	1-50
733	Spatsizi	6-20	C	Aug 1-Oct 15	adult mountain goat	1-50
734	Mount Edziza	6-21	A	Aug 1-Oct 15	adult mountain goat	1-50
735	Stikine River	6-21, 6-22	C	Aug 1-Oct 15	adult mountain goat	1-50
736	Stikine River	6-22	A	Aug 1-Oct 15	adult mountain goat	1-25
737	Atlin	6-25, 6-26, 6-27	C	Aug 1-Oct 15	adult mountain goat	1-150
738	Tagish Highland	6-27, 6-28	A	Aug 1-Oct 15	adult mountain goat	1-25
739	Tagish Highland	6-27	B	Aug 1-Oct 15	adult mountain goat	1-25
740	Tagish Highland	6-28	B	Aug 1-Oct 15	adult mountain goat	1-25
741	Skeena	6-30	C	Aug 1-Feb 28	adult mountain goat	1-50
742	Skeena	6-4	A	Dec 1-Dec 15	antlerless elk	1-50
743	Skeena	6-4	A	Dec 16-Dec 31	antlerless elk	1-50
744	Skeena	6-4	A	Jan 1-Jan 15	antlerless elk	1-50
745	Skeena	6-4	A	Jan 16-Jan 31	antlerless elk	1-50
746	Skeena	6-4	A	Feb 1-Feb 15	antlerless elk	1-50
747	Skeena	6-4	A	Feb 16-Mar 1	antlerless elk	1-50
748	Skeena	6-8	A	Dec 1-Dec 15	antlerless elk	1-50
749	Skeena	6-8	A	Dec 16-Dec 31	antlerless elk	1-50

Item	Column 1 <b>Limited Entry Hunting Area</b>	Column 2 <b>M.U.</b>	Column 3 <b>Zone</b>	Column 4 <b>Open Season</b>	Column 5 <b>Type of Wildlife</b>	Column 6 <b>ROA</b>
750	Skeena	6-8	A	Jan 1-Jan 15	antlerless elk	1-50
751	Skeena	6-8	A	Jan 16-Jan 31	antlerless elk	1-50
752	Skeena	6-8	A	Feb 1-Feb 15	antlerless elk	1-50
753	Skeena	6-8	A	Feb 16-Mar 1	antlerless elk	1-50
754	Skeena	6-9	A	Dec 1-Dec 15	antlerless elk	1-50
755	Skeena	6-9	A	Dec 16-Dec 31	antlerless elk	1-50
756	Skeena	6-9	A	Jan 1-Jan 15	antlerless elk	1-50
757	Skeena	6-9	A	Jan 16-Jan 31	antlerless elk	1-50
758	Skeena	6-9	A	Feb 1-Feb 15	antlerless elk	1-50
759	Skeena	6-9	A	Feb 16-Mar 1	antlerless elk	1-50
760	Skeena	6-4	A	Dec 1-Dec 15	bull elk	1-50
761	Skeena	6-4	A	Dec 16-Dec 31	bull elk	1-50
762	Skeena	6-4	A	Jan 1-Jan 15	bull elk	1-50
763	Skeena	6-4	A	Jan 16-Jan 31	bull elk	1-50
764	Skeena	6-4	A	Feb 1-Feb 15	bull elk	1-50
765	Skeena	6-4	A	Feb 16-Mar 1	bull elk	1-50
766	Skeena	6-8	A	Dec 1-Dec 15	bull elk	1-50
767	Skeena	6-8	A	Dec 16-Dec 31	bull elk	1-50
768	Skeena	6-8	A	Jan 1-Jan 15	bull elk	1-50
769	Skeena	6-8	A	Jan 16-Jan 31	bull elk	1-50
770	Skeena	6-8	A	Feb 1-Feb 15	bull elk	1-50
771	Skeena	6-8	A	Feb 16-Mar 1	bull elk	1-50
772	Skeena	6-9	A	Dec 1-Dec 15	bull elk	1-50

Item	Column 1 <b>Limited Entry Hunting Area</b>	Column 2 <b>M.U.</b>	Column 3 <b>Zone</b>	Column 4 <b>Open Season</b>	Column 5 <b>Type of Wildlife</b>	Column 6 <b>ROA</b>
773	Skeena	6-9	A	Dec 16-Dec 31	bull elk	1-50
774	Skeena	6-9	A	Jan 1-Jan 15	bull elk	1-50
775	Skeena	6-9	A	Jan 16-Jan 31	bull elk	1-50
776	Skeena	6-9	A	Feb 1-Feb 15	bull elk	1-50
777	Skeena	6-9	A	Feb 16-Mar 1	bull elk	1-50
778	Peace	7-20		Dec 1-Dec 20	antlerless mule (black-tailed) deer	1-50
779	Peace	7-21		Dec 1-Dec 20	antlerless mule (black-tailed) deer	1-50
780	Peace	7-32		Dec 1-Dec 20	antlerless mule (black-tailed) deer	1-50
781	Peace	7-33		Dec 1-Dec 20	antlerless mule (black-tailed) deer	1-100
782	Peace	7-34		Dec 1-Dec 20	antlerless mule (black-tailed) deer	1-100
783	Peace	7-35		Dec 1-Dec 20	antlerless mule (black-tailed) deer	1-50
784	Peace	7-45		Dec 1-Dec 20	antlerless mule (black-tailed) deer	1-50
785	Peace	7-46		Dec 1-Dec 20	antlerless mule (black-tailed) deer	1-50
786	Liard	7-42, 7-57	C	Oct 1-Oct 15	bison - either sex	1-50
787	Liard	7-42, 7-57	C	Oct 16-Oct 31	bison - either sex	1-50
788	Liard	7-42, 7-57	C	Nov 1-Nov 15	bison - either sex	1-50
789	Liard	7-42, 7-57	C	Nov 16-Nov 30	bison - either sex	1-50
790	Liard	7-42, 7-57	C	Dec 1-Dec 15	bison - either sex	1-50

Item	Column 1 <b>Limited Entry Hunting Area</b>	Column 2 <b>M.U.</b>	Column 3 <b>Zone</b>	Column 4 <b>Open Season</b>	Column 5 <b>Type of Wildlife</b>	Column 6 <b>ROA</b>
791	Liard	7-42, 7-57	C	Dec 16-Dec 31	bison - either sex	1-50
792	Liard	7-42, 7-57	C	Jan 1-Jan 15	bison - either sex	1-50
793	Liard	7-42, 7-57	C	Jan 16-Jan 31	bison - either sex	1-50
794	Liard	7-42, 7-57, 7-58	D	Oct 1-Oct 15	bison - either sex	1-50
795	Liard	7-42, 7-57, 7-58	D	Oct 16-Oct 31	bison - either sex	1-50
796	Liard	7-42, 7-57, 7-58	D	Nov 5-Nov 19	bison - either sex	1-50
797	Liard	7-42, 7-57, 7-58	D	Nov 20-Dec 5	bison - either sex	1-50
798	Liard	7-42, 7-57, 7-58	D	Dec 6-Dec 20	bison - either sex	1-50
799	Liard	7-42, 7-57, 7-58	D	Jan 1-Jan 15	bison - either sex	1-50
800	Liard	7-42, 7-57, 7-58	D	Jan 16-Jan 31	bison - either sex	1-50
801	Omineca	7-37	A	Aug 15-Oct 15	5 pt. bull caribou	1-50
802	Omineca	7-39	E	Aug 15-Oct 15	5 pt. bull caribou	1-50
803	Omineca	7-40	A	Aug 15-Oct 15	5 pt. bull caribou	1-50
804	Omineca	7-41	A	Aug 15-Oct 15	5 pt. bull caribou	1-50
805	Peace	7-50		Aug 15-Sept 30	5 pt. bull caribou	1-100
806	Peace	7-51		Aug 15-Sept 30	5 pt. bull caribou	1-100
807	Peace	7-52		Aug 15-Sept 30	5 pt. bull caribou	1-100

Item	Column 1 <b>Limited Entry Hunting Area</b>	Column 2 <b>M.U.</b>	Column 3 <b>Zone</b>	Column 4 <b>Open Season</b>	Column 5 <b>Type of Wildlife</b>	Column 6 <b>ROA</b>
808	Peace	7-54		Aug 15-Sept 30	5 pt. bull caribou	1-100
809	Prince George	7-2		The first Saturday in October and the following 9 days	calf moose	1-15
810	Prince George	7-3		The first Saturday in October and the following 9 days	calf moose	1-20
811	Prince George	7-4		The first Saturday in October and the following 9 days	calf moose	1-20
812	Prince George	7-5		The first Saturday in October and the following 9 days	calf moose	1-20
813	Prince George	7-6		The first Saturday in October and the following 9 days	calf moose	1-25
814	Prince George	7-7		The first Saturday in October and the following 9 days	calf moose	1-135
815	Prince George	7-8		The first Saturday in October and the following 9 days	calf moose	1-75
816	Prince George	7-9		The first Saturday in October and the following 9 days	calf moose	1-95
817	Prince George	7-10		The first Saturday in October and the following 9 days	calf moose	1-160
818	Prince George	7-11		The first Saturday in October and the following 9 days	calf moose	1-130
819	Prince George	7-12		The first Saturday in October and the following 9 days	calf moose	1-340
820	Prince George	7-13		The first Saturday in October and the following 9 days	calf moose	1-150
821	Prince George	7-14		The first Saturday in October and the following 9 days	calf moose	1-80

Item	Column 1 <b>Limited Entry Hunting Area</b>	Column 2 <b>M.U.</b>	Column 3 <b>Zone</b>	Column 4 <b>Open Season</b>	Column 5 <b>Type of Wildlife</b>	Column 6 <b>ROA</b>
822	Prince George	7-15		The first Saturday in October and the following 9 days	calf moose	1-200
823	Prince George	7-17		The first Saturday in October and the following 9 days	calf moose	1-35
824	Prince George	7-18		The first Saturday in October and the following 9 days	calf moose	1-10
825	Prince George	7-24		The first Saturday in October and the following 9 days	calf moose	1-125
826	Prince George	7-25		The first Saturday in October and the following 9 days	calf moose	1-95
827	Prince George	7-26		The first Saturday in October and the following 9 days	calf moose	1-40
828	Prince George	7-27		The first Saturday in October and the following 9 days	calf moose	1-25
829	Prince George	7-28		The first Saturday in October and the following 9 days	calf moose	1-40
830	Prince George	7-29		The first Saturday in October and the following 9 days	calf moose	1-65
831	Prince George	7-30		The first Saturday in October and the following 9 days	calf moose	1-25
832	Prince George	7-38		The first Saturday in October and the following 9 days	calf moose	1-40
833	Prince George	7-2		Oct 10-Oct 25	antlerless moose	1-45
834	Prince George	7-3		Oct 10-Oct 25	antlerless moose	1-65
835	Prince George	7-4		Oct 10-Oct 25	antlerless moose	1-45
836	Prince George	7-5		Oct 10-Oct 25	antlerless moose	1-65
837	Prince George	7-6		Oct 10-Oct 25	antlerless moose	1-70

Item	Column 1 <b>Limited Entry Hunting Area</b>	Column 2 <b>M.U.</b>	Column 3 <b>Zone</b>	Column 4 <b>Open Season</b>	Column 5 <b>Type of Wildlife</b>	Column 6 <b>ROA</b>
838	Prince George	7-7		Oct 10-Oct 25	antlerless moose	1-125
839	Prince George	7-8		Oct 10-Oct 25	antlerless moose	1-70
840	Prince George	7-9		Oct 10-Oct 25	antlerless moose	1-70
841	Prince George	7-10		Oct 10-Oct 25	antlerless moose	1-70
842	Prince George	7-11		Oct 10-Oct 25	antlerless moose	1-65
843	Prince George	7-12	A	Oct 10-Oct 25	antlerless moose	1-35
844	Prince George	7-12	B	Oct 10-Oct 25	antlerless moose	1-35
845	Prince George	7-13		Oct 10-Oct 25	antlerless moose	1-50
846	Prince George	7-14		Oct 10-Oct 25	antlerless moose	1-90
847	Prince George	7-15		Oct 10-Oct 25	antlerless moose	1-65
848	Prince George	7-17		Oct 10-Oct 25	antlerless moose	1-75
849	Prince George	7-18		Oct 10-Oct 25	antlerless moose	1-60
850	Prince George	7-24		Oct 10-Oct 25	antlerless moose	1-65
851	Prince George	7-25		Oct 10-Oct 25	antlerless moose	1-65
852	Prince George	7-26		Oct 10-Oct 25	antlerless moose	1-60
853	Prince George	7-27		Oct 10-Oct 25	antlerless moose	1-60
854	Prince George	7-28		Oct 10-Oct 25	antlerless moose	1-65
855	Prince George	7-29		Oct 10-Oct 25	antlerless moose	1-65
856	Prince George	7-30		Oct 10-Oct 25	antlerless moose	1-50
857	Prince George	7-38		Oct 10-Oct 25	antlerless moose	1-65
858	Prince George	7-2		Sept 1-Nov 5	bull moose	1-75

Item	Column 1 <b>Limited Entry Hunting Area</b>	Column 2 <b>M.U.</b>	Column 3 <b>Zone</b>	Column 4 <b>Open Season</b>	Column 5 <b>Type of Wildlife</b>	Column 6 <b>ROA</b>
859	Prince George	7-3		Sept 1-Nov 5	bull moose	1-75
860	Prince George	7-4		Sept 1-Nov 5	bull moose	1-75
861	Prince George	7-5		Sept 1-Nov 5	bull moose	1-75
862	Prince George	7-6		Sept 1-Nov 5	bull moose	1-95
863	Prince George	7-7		Sept 1-Nov 5	bull moose	1-190
864	Prince George	7-8		Sept 1-Nov 5	bull moose	1-150
865	Prince George	7-9		Sept 1-Nov 5	bull moose	1-150
866	Prince George	7-10		Sept 1-Nov 5	bull moose	1-190
867	Prince George	7-11		Sept 1-Nov 5	bull moose	1-190
868	Prince George	7-12	A	Sept 1-Nov 5	bull moose	1-110
869	Prince George	7-12	B	Sept 1-Nov 5	bull moose	1-110
870	Prince George	7-13	A	Sept 1-Oct 5	bull moose	1-100
871	Prince George	7-13	A	Oct 6-Nov 5	bull moose	1-100
872	Prince George	7-13	B	Sept 1-Oct 5	bull moose	1-100
873	Prince George	7-13	B	Oct 6-Nov 5	bull moose	1-100
874	Prince George	7-14		Sept 1-Oct 5	bull moose	1-100
875	Prince George	7-14		Oct 6-Nov 5	bull moose	1-100
876	Prince George	7-15		Sept 1-Oct 5	bull moose	1-100
877	Prince George	7-15		Oct 6-Nov 5	bull moose	1-100
878	Prince George	7-16	A	Aug 15-Sept 30	bull moose	1-100
879	Prince George	7-16	B	Aug 15-Sept 30	bull moose	1-100
880	Prince George	7-16	C	Aug 15-Sept 30	bull moose	1-100
881	Prince George	7-16	A	Oct 1-Nov 5	bull moose	1-100

Item	Column 1 <b>Limited Entry Hunting Area</b>	Column 2 <b>M.U.</b>	Column 3 <b>Zone</b>	Column 4 <b>Open Season</b>	Column 5 <b>Type of Wildlife</b>	Column 6 <b>ROA</b>
882	Prince George	7-16	B	Oct 1-Nov 5	bull moose	1-100
883	Prince George	7-16	C	Oct 1-Nov 5	bull moose	1-100
884	Prince George	7-17		Sept 10-Nov 5	bull moose	1-75
885	Prince George	7-18		Aug 15-Nov 5	bull moose	1-75
886	Prince George	7-23	A	Aug 15-Sept 30	bull moose	1-100
887	Prince George	7-23	B	Aug 15-Sept 30	bull moose	1-100
888	Prince George	7-23	C	Aug 15-Sept 30	bull moose	1-100
889	Prince George	7-23	D	Aug 15-Sept 30	bull moose	1-100
890	Prince George	7-23	E	Aug 15-Sept 30	bull moose	1-100
891	Prince George	7-23	A	Oct 1-Nov 5	bull moose	1-100
892	Prince George	7-23	B	Oct 1-Nov 5	bull moose	1-100
893	Prince George	7-23	C	Oct 1-Nov 5	bull moose	1-100
894	Prince George	7-23	D	Oct 1-Nov 5	bull moose	1-100
895	Prince George	7-23	E	Oct 1-Nov 5	bull moose	1-100
896	Prince George	7-24		Sept 10-Oct 5	bull moose	1-100
897	Prince George	7-24		Oct 6-Nov 5	bull moose	1-100
898	Prince George	7-25	A	Sept 10-Oct 5	bull moose	1-110
899	Prince George	7-25	A	Oct 6-Nov 5	bull moose	1-110
900	Prince George	7-25	B	Sept 10-Oct 5	bull moose	1-110
901	Prince George	7-25	B	Oct 6-Nov 5	bull moose	1-110
902	Prince George	7-25	C	Sept 10-Oct 5	bull moose	1-110
903	Prince George	7-25	C	Oct 6-Nov 5	bull moose	1-110
904	Prince George	7-26	A	Sept 10-Oct 5	bull moose	1-110

Item	Column 1 <b>Limited Entry Hunting Area</b>	Column 2 <b>M.U.</b>	Column 3 <b>Zone</b>	Column 4 <b>Open Season</b>	Column 5 <b>Type of Wildlife</b>	Column 6 <b>ROA</b>
905	Prince George	7-26	A	Oct 6-Nov 5	bull moose	1-110
906	Prince George	7-26	B	Sept 10-Oct 5	bull moose	1-110
907	Prince George	7-26	B	Oct 6-Nov 5	bull moose	1-110
908	Prince George	7-26	C	Sept 10-Oct 5	bull moose	1-110
909	Prince George	7-26	C	Oct 6-Nov 5	bull moose	1-110
910	Prince George	7-27	A	Sept 10-Oct 5	bull moose	1-110
911	Prince George	7-27	A	Oct 6-Nov 5	bull moose	1-110
912	Prince George	7-27	B	Sept 10-Oct 5	bull moose	1-110
913	Prince George	7-27	B	Oct 6-Nov 5	bull moose	1-110
914	Prince George	7-28	A	Sept 10-Oct 5	bull moose	1-200
915	Prince George	7-28	A	Oct 6-Nov 5	bull moose	1-200
916	Prince George	7-28	B	Sept 10-Oct 5	bull moose	1-200
917	Prince George	7-28	B	Oct 6-Nov 5	bull moose	1-200
918	Prince George	7-29		Sept 10-Oct 5	bull moose	1-110
919	Prince George	7-29		Oct 6-Nov 5	bull moose	1-110
920	Prince George	7-30		Sept 10-Nov 5	bull moose	1-75
921	Prince George	7-37		Aug 15-Oct 9	bull moose	1-50
922	Prince George	7-37		Oct 10-Nov 5	bull moose	1-50
923	Prince George	7-38	A	Aug 15-Oct 9	bull moose	1-50
924	Prince George	7-38	A	Oct 10-Nov 5	bull moose	1-50
925	Prince George	7-38	B	Aug 15-Oct 9	bull moose	1-50
926	Prince George	7-38	B	Oct 10-Nov 5	bull moose	1-50
927	Prince George	7-39		Aug 15-Oct 9	bull moose	1-50

Item	Column 1 <b>Limited Entry Hunting Area</b>	Column 2 <b>M.U.</b>	Column 3 <b>Zone</b>	Column 4 <b>Open Season</b>	Column 5 <b>Type of Wildlife</b>	Column 6 <b>ROA</b>
928	Prince George	7-39		Oct 10-Nov 5	bull moose	1-50
929	Prince George	7-40		Aug 15-Oct 9	bull moose	1-50
930	Prince George	7-40		Oct 10-Nov 5	bull moose	1-50
931	Prince George	7-41		Aug 15-Oct 9	bull moose	1-50
932	Prince George	7-41		Oct 10-Nov 5	bull moose	1-50
933	South Peace	7-19		Sept 1-Sept 15	bull moose	1-100
934	South Peace	7-19		Sept 16-Sept 30	bull moose	1-100
935	South Peace	7-19		Oct 1-Oct 15	bull moose	1-100
936	South Peace	7-19		Oct 16-Oct 24 & Oct 27-Oct 31	bull moose	1-100
937	South Peace	7-19		Nov 1-Nov 9 & Nov 12-Nov 15	bull moose	1-100
938	South Peace	7-20		Sept 1-Sept 15	bull moose	1-300
939	South Peace	7-20		Sept 16-Sept 30	bull moose	1-300
940	South Peace	7-20		Oct 1-Oct 15	bull moose	1-300
941	South Peace	7-20		Oct 16-Oct 24 & Oct 27-Oct 31	bull moose	1-300
942	South Peace	7-20		Nov 1-Nov 9 & Nov 12-Nov 15	bull moose	1-300
943	South Peace	7-21		Sept 1-Sept 15	bull moose	1-250
944	South Peace	7-21		Sept 16-Sept 30	bull moose	1-250
945	South Peace	7-21		Oct 1-Oct 15	bull moose	1-250
946	South Peace	7-21		Oct 16-Oct 24 & Oct 27-Oct 31	bull moose	1-250
947	South Peace	7-21		Nov 1-Nov 9 & Nov 12-Nov 15	bull moose	1-250
948	South Peace	7-22		Sept 1-Sept 15	bull moose	1-150
949	South Peace	7-22		Sept 16-Sept 30	bull moose	1-150
950	South Peace	7-22		Oct 1-Oct 15	bull moose	1-150

Item	Column 1 <b>Limited Entry Hunting Area</b>	Column 2 <b>M.U.</b>	Column 3 <b>Zone</b>	Column 4 <b>Open Season</b>	Column 5 <b>Type of Wildlife</b>	Column 6 <b>ROA</b>
951	South Peace	7-22		Oct 16-Oct 24 & Oct 27-Oct 31	bull moose	1-150
952	South Peace	7-22		Nov 1-Nov 9 & Nov 12-Nov 15	bull moose	1-150
953	South Peace	7-31	A	Sept 1-Sept 15	bull moose	1-200
954	South Peace	7-31	A	Sept 16-Sept 30	bull moose	1-200
955	South Peace	7-31	A	Oct 1-Oct 15	bull moose	1-200
956	South Peace	7-31	A	Oct 16-Oct 24 & Oct 27-Oct 31	bull moose	1-200
957	South Peace	7-31	A	Nov 1-Nov 9 & Nov 12-Nov 15	bull moose	1-200
958	North Peace	7-32	A	Sept 1-Sept 15	bull moose	1-200
959	North Peace	7-32	A	Sept 16-Sept 30	bull moose	1-200
960	North Peace	7-32	A	Oct 1-Oct 15	bull moose	1-200
961	North Peace	7-32	A	Oct 16-Oct 31	bull moose	1-200
962	North Peace	7-32	A	Nov 1-Nov 15	bull moose	1-200
963	North Peace	7-32	B	Sept 1-Sept 15	bull moose	1-200
964	North Peace	7-32	B	Sept 16-Sept 30	bull moose	1-200
965	North Peace	7-32	B	Oct 1-Oct 15	bull moose	1-200
966	North Peace	7-32	B	Oct 16-Oct 31	bull moose	1-200
967	North Peace	7-32	B	Nov 1-Nov 15	bull moose	1-200
968	North Peace	7-33	A	Sept 1-Sept 15	bull moose	1-200
969	North Peace	7-33	A	Sept 16-Sept 30	bull moose	1-200
970	North Peace	7-33	A	Oct 1-Oct 15	bull moose	1-200
971	North Peace	7-33	A	Oct 16-Oct 24 & Oct 27-Oct 31	bull moose	1-200
972	North Peace	7-33	A	Nov 1-Nov 9 & Nov 12-Nov 15	bull moose	1-200
973	North Peace	7-33	B	Sept 1-Sept 15	bull moose	1-200

Item	Column 1 <b>Limited Entry Hunting Area</b>	Column 2 <b>M.U.</b>	Column 3 <b>Zone</b>	Column 4 <b>Open Season</b>	Column 5 <b>Type of Wildlife</b>	Column 6 <b>ROA</b>
974	North Peace	7-33	B	Sept 16-Sept 30	bull moose	1-200
975	North Peace	7-33	B	Oct 1-Oct 15	bull moose	1-200
976	North Peace	7-33	B	Oct 16-Oct 24 & Oct 27-Oct 31	bull moose	1-200
977	North Peace	7-33	B	Nov 1-Nov 9 & Nov 12-Nov 15	bull moose	1-200
978	North Peace	7-34		Sept 1-Sept 15	bull moose	1-200
979	North Peace	7-34		Sept 16-Sept 30	bull moose	1-200
980	North Peace	7-34		Oct 1-Oct 15	bull moose	1-200
981	North Peace	7-34		Oct 16-Oct 31	bull moose	1-200
982	North Peace	7-34		Nov 1-Nov 15	bull moose	1-200
983	North Peace	7-35		Sept 1-Sept 15	bull moose	1-200
984	North Peace	7-35		Sept 16-Sept 30	bull moose	1-200
985	North Peace	7-35		Oct 1-Oct 15	bull moose	1-200
986	North Peace	7-35		Oct 16-Oct 24 & Oct 27-Oct 31	bull moose	1-200
987	North Peace	7-35		Nov 1-Nov 9 & Nov 12-Nov 15	bull moose	1-200
988	North Peace	7-43	A	Sept 1-Sept 15	bull moose	1-200
989	North Peace	7-43	A	Sept 16-Sept 30	bull moose	1-200
990	North Peace	7-43	A	Oct 1-Oct 15	bull moose	1-200
991	North Peace	7-43	A	Oct 16-Oct 31	bull moose	1-200
992	North Peace	7-43	A	Nov 1-Nov 15	bull moose	1-200
993	North Peace	7-44		Sept 1-Sept 15	bull moose	1-150
994	North Peace	7-44		Sept 16-Sept 30	bull moose	1-150
995	North Peace	7-44		Oct 1-Oct 15	bull moose	1-150
996	North Peace	7-44		Oct 16-Oct 31	bull moose	1-150

Item	Column 1 <b>Limited Entry Hunting Area</b>	Column 2 <b>M.U.</b>	Column 3 <b>Zone</b>	Column 4 <b>Open Season</b>	Column 5 <b>Type of Wildlife</b>	Column 6 <b>ROA</b>
997	North Peace	7-44		Nov 1-Nov 15	bull moose	1-150
998	North Peace	7-45		Sept 1-Sept 15	bull moose	1-150
999	North Peace	7-45		Sept 16-Sept 30	bull moose	1-150
1000	North Peace	7-45		Oct 1-Oct 15	bull moose	1-150
1001	North Peace	7-45		Oct 16-Oct 31	bull moose	1-150
1002	North Peace	7-45		Nov 1-Nov 15	bull moose	1-150
1003	Fort Nelson	7-46		Sept 1-Sept 15	bull moose	1-100
1004	Fort Nelson	7-46		Sept 16-Sept 30	bull moose	1-100
1005	Fort Nelson	7-46		Oct 1-Oct 15	bull moose	1-100
1006	Fort Nelson	7-46		Oct 16-Oct 24 & Oct 27-Oct 31	bull moose	1-100
1007	Fort Nelson	7-46		Nov 1-Nov 9 & Nov 12-Nov 15	bull moose	1-100
1008	Fort Nelson	7-47		Sept 1-Sept 15	bull moose	1-100
1009	Fort Nelson	7-47		Sept 16-Sept 30	bull moose	1-100
1010	Fort Nelson	7-47		Oct 1-Oct 15	bull moose	1-100
1011	Fort Nelson	7-47		Oct 16-Oct 24 & Oct 24-Oct 31	bull moose	1-100
1012	Fort Nelson	7-47		Nov 1-Nov 9 & Nov 12-Nov 15	bull moose	1-100
1013	Fort Nelson	7-48		Sept 1-Sept 15	bull moose	1-100
1014	Fort Nelson	7-48		Sept 16-Sept 30	bull moose	1-100
1015	Fort Nelson	7-48		Oct 1-Oct 15	bull moose	1-100
1016	Fort Nelson	7-48		Oct 16-Oct 24 & Oct 27-Oct 31	bull moose	1-100
1017	Fort Nelson	7-48		Nov 1-Nov 9 & Nov 12-Nov 15	bull moose	1-100
1018	Fort Nelson	7-49		Sept 1-Sept 15	bull moose	1-150
1019	Fort Nelson	7-49		Sept 16-Sept 30	bull moose	1-150

Item	Column 1 <b>Limited Entry Hunting Area</b>	Column 2 <b>M.U.</b>	Column 3 <b>Zone</b>	Column 4 <b>Open Season</b>	Column 5 <b>Type of Wildlife</b>	Column 6 <b>ROA</b>
1020	Fort Nelson	7-49		Oct 1-Oct 15	bull moose	1-150
1021	Fort Nelson	7-49		Oct 16-Oct 24 & Oct 27-Oct 31	bull moose	1-150
1022	Fort Nelson	7-49		Nov 1-Nov 9 & Nov 12-Nov 15	bull moose	1-150
1023	Jade Boulder	7-52	A	Sept 10-Sept 24	bull moose	1-113
1024	Jade Boulder	7-52	A	Sept 25-Oct 10	bull moose	1-113
1025	Fort Nelson	7-55		Sept 1-Sept 15	bull moose	1-100
1026	Fort Nelson	7-55		Sept 16-Sept 30	bull moose	1-100
1027	Fort Nelson	7-55		Oct 1-Oct 15	bull moose	1-100
1028	Fort Nelson	7-55		Oct 16-Oct 24 & Oct 27-Oct 31	bull moose	1-100
1029	Fort Nelson	7-55		Nov 1-Nov 9 & Nov 12-Nov 15	bull moose	1-100
1030	Fort Nelson	7-56		Sept 1-Sept 15	bull moose	1-100
1031	Fort Nelson	7-56		Sept 16-Sept 30	bull moose	1-100
1032	Fort Nelson	7-56		Oct 1-Oct 15	bull moose	1-100
1033	Fort Nelson	7-56		Oct 16-Oct 31	bull moose	1-100
1034	Fort Nelson	7-56		Nov 1-Nov 15	bull moose	1-100
1035	Northeast Rockies	7-58		Sept 1-Sept 15	bull moose	1-100
1036	Northeast Rockies	7-58		Sept 16-Sept 30	bull moose	1-100
1037	Northeast Rockies	7-58		Oct 1-Oct 15	bull moose	1-100
1038	Northeast Rockies	7-58		Oct 16-Oct 31	bull moose	1-100
1039	Northeast Rockies	7-58		Nov 1-Nov 15	bull moose	1-100
1040	Kinbasket	7-2	B	Sept 1-Oct 15	adult mountain goat	1-5
1041	Kinbasket	7-2	C	Sept 1-Oct 15	adult mountain goat	1-10

Item	Column 1 <b>Limited Entry Hunting Area</b>	Column 2 <b>M.U.</b>	Column 3 <b>Zone</b>	Column 4 <b>Open Season</b>	Column 5 <b>Type of Wildlife</b>	Column 6 <b>ROA</b>
1042	Kinbasket	7-2	D	Sept 1-Oct 15	adult mountain goat	1-10
1043	Kinbasket	7-2	F	Sept 1-Oct 15	adult mountain goat	1-10
1044	Kinbasket	7-2	G	Sept 1-Oct 15	adult mountain goat	1-5
1045	Kinbasket	7-2	I	Sept 1-Oct 15	adult mountain goat	1-5
1046	Holmes River	7-3	A	Sept 1-Oct 15	adult mountain goat	1-10
1047	Holmes River	7-3	B	Sept 1-Oct 15	adult mountain goat	1-5
1048	Holmes River	7-3	C	Sept 1-Oct 15	adult mountain goat	1-5
1049	Holmes River	7-3	D	Sept 1-Oct 15	adult mountain goat	1-5
1050	Holmes River	7-3	E	Sept 1-Oct 15	adult mountain goat	1-5
1051	Holmes River	7-3	F	Sept 1-Oct 15	adult mountain goat	1-5
1052	Holmes River	7-3	G	Sept 1-Oct 15	adult mountain goat	1-5
1053	Holmes River	7-3	H	Sept 1-Oct 15	adult mountain goat	1-10
1054	Holmes River	7-3	I	Sept 1-Oct 15	adult mountain goat	1-5
1055	Holmes River	7-3	J	Sept 1-Oct 15	adult mountain goat	1-5
1056	Holmes River	7-3	K	Sept 1-Oct 15	adult mountain goat	1-5
1057	Holmes River	7-3	L	Sept 1-Oct 15	adult mountain goat	1-10
1058	Castle Creek	7-4	A	Sept 1-Oct 15	adult mountain goat	1-10
1059	Doré River	7-4	B	Sept 1-Oct 15	adult mountain goat	1-20
1060	McLennan River	7-4	C	Sept 1-Oct 15	adult mountain goat	1-15
1061	Kiwa Creek	7-4	D	Sept 1-Oct 15	adult mountain goat	1-15
1062	Peace River	7-19	B	Aug 15-Nov 15	adult mountain goat	1-50

Item	Column 1 <b>Limited Entry Hunting Area</b>	Column 2 <b>M.U.</b>	Column 3 <b>Zone</b>	Column 4 <b>Open Season</b>	Column 5 <b>Type of Wildlife</b>	Column 6 <b>ROA</b>
1063	Peace River	7-19	C	Aug 15-Nov 15	adult mountain goat	1-50
1064	Peace River	7-19	D	Aug 15-Nov 15	adult mountain goat	1-100
1065	Peace River	7-19	E	Aug 15-Nov 15	adult mountain goat	1-50
1066	Peace River	7-19	F	Aug 15-Nov 15	adult mountain goat	1-50
1067	Peace River	7-19	G	Aug 15-Nov 15	adult mountain goat	1-100
1068	Peace River	7-19, 7-21	A	Aug 15-Nov 15	adult mountain goat	1-50
1069	Peace River	7-19, 7-21	B	Aug 15-Nov 15	adult mountain goat	1-50
1070	Peace River	7-21	C	Aug 15-Nov 15	adult mountain goat	1-50
1071	Peace River	7-21	D	Aug 15-Nov 15	adult mountain goat	1-50
1072	Peace River	7-21	E	Aug 15-Nov 15	adult mountain goat	1-50
1073	Peace River	7-21, 7-22	A	Aug 15-Nov 15	adult mountain goat	1-50
1074	Peace River	7-21, 7-22	B	Aug 15-Nov 15	adult mountain goat	1-50
1075	Peace River	7-21, 7-22	K	Aug 15-Nov 15	adult mountain goat	1-50
1076	Peace River	7-31		Aug 15-Nov 15	adult mountain goat	1-75
1077	Peace River	7-36	A	Aug 15-Nov 15	adult mountain goat	1-50
1078	Peace River	7-42	C	Aug 15-Nov 15	adult mountain goat	1-75
1079	Kluachesi	7-50	A	Aug 25-Oct 15	adult mountain goat	1-50
1080	Yash-Yedhe	7-51	A	Aug 25-Oct 15	adult mountain goat	1-50
1081*	Prince George	7-7, 7-8, 7-9, 7-10, 7-15, 7-24		Oct 15-Nov 14	antlerless elk	1-40

Item	Column 1 <b>Limited Entry Hunting Area</b>	Column 2 <b>M.U.</b>	Column 3 <b>Zone</b>	Column 4 <b>Open Season</b>	Column 5 <b>Type of Wildlife</b>	Column 6 <b>ROA</b>
1082*	Prince George	7-12, 7-13, 7-14, 7-25		Oct 15-Nov 14	antlerless elk	1-40
1083	Prince George	7-2, 7-3, 7-4, 7-5, 7-17		Nov 15-Dec 14	antlerless elk	1-100
1084	Prince George	7-2, 7-3, 7-4, 7-5, 7-17		Dec 15-Jan 14	antlerless elk	1-100
1085	Prince George	7-2, 7-3, 7-4, 7-5, 7-17		Jan 15-Feb 28	antlerless elk	1-100
1086	Prince George	7-7,7-8, 7-9, 7-10, 7-15, 7-24		Nov 15-Dec 14	antlerless elk	1-300
1087	Prince George	7-7,7-8, 7-9, 7-10, 7-15, 7-24		Dec 15-Jan 14	antlerless elk	1-300
1088	Prince George	7-7,7-8, 7-9, 7-10, 7-15, 7-24		Jan 15-Feb 28	antlerless elk	1-300
1089	Prince George	7-12, 7-13, 7-14, 7-25		Nov 15-Dec 14	antlerless elk	1-160
1090	Prince George	7-12, 7-13, 7-14, 7-25		Dec 15-Jan 14	antlerless elk	1-160
1091	Prince George	7-12, 7-13, 7-14, 7-25		Jan 15-Feb 28	antlerless elk	1-160
1092	Peace	7-20		Dec 1-Feb 28	antlerless elk	50-150
1093	Peace	7-21		Dec 1-Feb 28	antlerless elk	50-150
1094	Peace	7-32		Dec 1-Feb 28	antlerless elk	50-150

Item	Column 1 <b>Limited Entry Hunting Area</b>	Column 2 <b>M.U.</b>	Column 3 <b>Zone</b>	Column 4 <b>Open Season</b>	Column 5 <b>Type of Wildlife</b>	Column 6 <b>ROA</b>
1095	Peace	7-33		Dec 1-Feb 28	antlerless elk	200-800
1096	Peace	7-34		Dec 1-Feb 28	antlerless elk	200-800
1097	Peace	7-35		Dec 1-Feb 28	antlerless elk	200-600
1098	Peace	7-45		Dec 1-Feb 28	antlerless elk	1-50
1099	Peace	7-46		Dec 1-Feb 28	antlerless elk	1-50
1100	Toad River	7-51, 7-54	A	Dec 1-Feb 28	antlerless elk	1-200
1101	Tuchodi	7-42, 7-50	A	Aug 20-Oct 31	antlerless elk	1-150
1102*	Peace River	7-20, 7-21, 7-32, 7-33, 7-34, 7-35, 7-45, 7-46	A	Dec 1-Feb 28	elk - either sex	50-500
1103*	Okanagan	8-1		Oct 20-Oct 31	antlerless mule (black-tailed) deer	1-240
1104	Okanagan	8-1	A	Oct 1-Oct 15	antlerless mule (black-tailed) deer	1-100
1105*	Okanagan	8-2		Oct 20-Oct 31	antlerless mule (black-tailed) deer	1-140
1106*	Okanagan	8-3		Oct 20-Oct 31	antlerless mule (black-tailed) deer	1-40
1107*	Okanagan	8-4		Oct 20-Oct 31	antlerless mule (black-tailed) deer	1-160
1108*	Okanagan	8-5	A	Oct 20-Oct 31	antlerless mule (black-tailed) deer	1-200
1109*	Okanagan	8-5	B	Oct 20-Oct 31	antlerless mule (black-tailed) deer	1-120

Item	Column 1 <b>Limited Entry Hunting Area</b>	Column 2 <b>M.U.</b>	Column 3 <b>Zone</b>	Column 4 <b>Open Season</b>	Column 5 <b>Type of Wildlife</b>	Column 6 <b>ROA</b>
1110*	Okanagan	8-6		Oct 20-Oct 31	antlerless mule (black-tailed) deer	1-120
1111*	Okanagan	8-7		Oct 20-Oct 31	antlerless mule (black-tailed) deer	1-80
1112*	Okanagan	8-8		Oct 20-Oct 31	antlerless mule (black-tailed) deer	1-260
1113*	Okanagan	8-9		Oct 20-Oct 31	antlerless mule (black-tailed) deer	1-100
1114	Okanagan	8-9	B	Oct 1-Oct 15	antlerless mule (black-tailed) deer	1-160
1115	Okanagan	8-9	C	Oct 1-Oct 15	antlerless mule (black-tailed) deer	1-100
1116*	Okanagan	8-10		Oct 20-Oct 31	antlerless mule (black-tailed) deer	1-100
1117*	Okanagan	8-11		Oct 20-Oct 31	antlerless mule (black-tailed) deer	1-100
1118*	Okanagan	8-12		Oct 20-Oct 31	antlerless mule (black-tailed) deer	1-300
1119*	Okanagan	8-14		Oct 20-Oct 31	antlerless mule (black-tailed) deer	1-320
1120*	Okanagan	8-15		Oct 20-Oct 31	antlerless mule (black-tailed) deer	1-220
1121*	Okanagan	8-22		Oct 20-Oct 31	antlerless mule (black-tailed) deer	1-80
1122*	Okanagan	8-23		Oct 20-Oct 31	antlerless mule (black-tailed) deer	1-160
1123*	Okanagan	8-24		Oct 20-Oct 31	antlerless mule (black-tailed) deer	1-80

Item	Column 1 <b>Limited Entry Hunting Area</b>	Column 2 <b>M.U.</b>	Column 3 <b>Zone</b>	Column 4 <b>Open Season</b>	Column 5 <b>Type of Wildlife</b>	Column 6 <b>ROA</b>
1124*	Okanagan	8-25		Oct 20-Oct 31	antlerless mule (black-tailed) deer	1-60
1125	Princeton	8-4, 8-5, 8-6	A	Sept 10-Sept 30	antlerless elk	1-50
1126	Princeton	8-4, 8-5, 8-6	A	Oct 1-Oct 20	antlerless elk	1-50
1127	Christian Valley	8-12, 8-14	A	Nov 10-Dec 15	antlerless elk	5-50
1128	Christian Valley	8-12, 8-14	A	Jan 15-Feb 28	antlerless elk	5-50
1129	Okanagan	8-1		Oct 1-Oct 31	bull moose	1-20
1130	Okanagan	8-1		Nov 1-Nov 30	bull moose	1-20
1131	Okanagan	8-2, 8-7		Oct 1-Oct 31	bull moose	1-50
1132	Okanagan	8-2, 8-7		Nov 1-Nov 30	bull moose	1-50
1133	Okanagan	8-3, 8-4		Oct 1-Oct 31	bull moose	1-20
1134	Okanagan	8-3, 8-4		Nov 1-Nov 30	bull moose	1-20
1135	Okanagan	8-5		Oct 1-Oct 31	bull moose	1-40
1136	Okanagan	8-5		Nov 1-Nov 30	bull moose	1-40
1137	Okanagan	8-6		Oct 1-Oct 31	bull moose	1-30
1138	Okanagan	8-6		Nov 1-Nov 30	bull moose	1-30
1139	Okanagan	8-8		Oct 1-Oct 31	bull moose	1-40
1140	Okanagan	8-8		Nov 1-Nov 30	bull moose	1-40
1141	Okanagan	8-9		Oct 1-Oct 31	bull moose	1-30
1142	Okanagan	8-9		Nov 1-Nov 30	bull moose	1-30
1143	Okanagan	8-10		Oct 1-Oct 31	bull moose	1-50
1144	Okanagan	8-10		Nov 1-Nov 30	bull moose	1-50
1145	Okanagan	8-11		Oct 1-Oct 31	bull moose	1-20

Item	Column 1 <b>Limited Entry Hunting Area</b>	Column 2 <b>M.U.</b>	Column 3 <b>Zone</b>	Column 4 <b>Open Season</b>	Column 5 <b>Type of Wildlife</b>	Column 6 <b>ROA</b>
1146	Okanagan	8-11		Nov 1-Nov 30	bull moose	1-20
1147	Okanagan	8-12		Oct 1-Oct 31	bull moose	1-50
1148	Okanagan	8-12		Nov 1-Nov 30	bull moose	1-50
1149	Okanagan	8-13, 8-14		Oct 1-Oct 31	bull moose	1-50
1150	Okanagan	8-13, 8-14		Nov 1-Nov 30	bull moose	1-50
1151	Okanagan	8-15		Oct 1-Oct 31	bull moose	1-20
1152	Okanagan	8-15		Nov 1-Nov 30	bull moose	1-20
1153	Okanagan	8-21		Oct 1-Oct 31	bull moose	1-10
1154	Okanagan	8-21		Nov 1-Nov 30	bull moose	1-10
1155	Okanagan	8-22		Oct 1-Oct 31	bull moose	1-50
1156	Okanagan	8-22		Nov 1-Nov 30	bull moose	1-50
1157	Okanagan	8-23		Oct 1-Oct 31	bull moose	1-10
1158	Okanagan	8-23		Nov 1-Nov 30	bull moose	1-10
1159	Okanagan	8-24		Oct 1-Oct 31	bull moose	1-10
1160	Okanagan	8-24		Nov 1-Nov 30	bull moose	1-10
1161	Okanagan	8-25		Oct 1-Oct 31	bull moose	1-10
1162	Okanagan	8-25		Nov 1-Nov 30	bull moose	1-10
1163	Okanagan	8-26		Oct 1-Oct 31	bull moose	1-50
1164	Okanagan	8-26		Nov 1-Nov 30	bull moose	1-50
1165	Okanagan	8-8		Nov 1-Nov 30	antlerless moose	1-20
1166	Okanagan	8-10		Nov 1-Nov 30	antlerless moose	1-20
1167	Okanagan	8-11		Nov 1-Nov 30	antlerless moose	1-20
1168	Okanagan	8-12		Nov 1-Nov 30	antlerless moose	1-20

Item	Column 1 <b>Limited Entry Hunting Area</b>	Column 2 <b>M.U.</b>	Column 3 <b>Zone</b>	Column 4 <b>Open Season</b>	Column 5 <b>Type of Wildlife</b>	Column 6 <b>ROA</b>
1169	Okanagan	8-23		Nov 1-Nov 30	antlerless moose	1-20
1170	Similkameen	8-2, 8-7		Nov 1-Nov 30	adult mountain goat	1-10
1171	Central Okanagan	8-9	A	Sept 20-Nov 30	adult mountain goat	1-20
1172	Ashnola	8-3		Sept 1-Sept 30	bighorn ram mountain sheep	1-20
1173	Okanagan	8-1		Sept 1-Sept 30	bighorn ram mountain sheep	1-20
1174	Okanagan	8-9	A	Sept 1-Sept 30	bighorn ram mountain sheep	1-20
1175	Granby	8-15	F	Sept 1-Sept 30	bighorn ram mountain sheep	1-20
1176	Spatsizi Combo Hunt	6-20	A	Aug 15-Oct 15	5 pt. bull caribou bull moose	1-20 1-20
1177	Haida Gwaii	6-12, 6-13		Apr 1-June 30 & Sept 1-Nov 30	black bear	1-10

\* Youth only .

**5 Schedule II is amended**

**(a) by repealing the following maps:**

- 2010/2011 Elk Zone E of 1-12
- 2022 Elk Zone D of 1-5
- 2010/2011 Elk Zone A of 1-11
- 2012/2013 Elk Zone A of 2-8
- 2009/2010 Mountain Goat Zone A of 4-26
- 2009/2010 Mountain Goat Zone C of 4-20
- 2024 Elk Zone A of 4-3
- 2024 Elk Zone A of 4-22
- 2020 Mountain Goat Zone H of 5-4
- 2018 Moose Closed Season MUs 5-3, 5-4
- 2018 Moose Closed Season MU 5-6
- 2020 Moose Zone A of 5-3
- 2020 Moose Zone B of 5-4

2020 Moose Zone A of 5-6  
2024 Moose Zone A of 7-38  
2024 Moose Zone B of 7-38  
2024 Caribou Zone A of 7-37  
2024 Moose Zone A of 6-25  
2010/2011 Mountain Sheep Zone A of 6-20 , *and*

*(b) by adding the following maps:*

2026 ELK Zone D of 1-5  
2026 ELK Zone A of 1-11  
2026 ELK Zone A of 2-19  
2026 ELK Zone A of 2-9  
2026 ELK Zone A of 2-8  
2026 ELK Zone C of 2-8  
2026 MOUNTAIN GOAT Zone A of 4-26  
2026 MOUNTAIN GOAT Zone C of 4-20  
2026 ELK Zone I of 4-3  
2026 ELK Zone B of 4-6  
2026 ELK Zone C of 4-2  
2026 ELK Zone E of 4-22  
2026 MOUNTAIN SHEEP Zone C of 5-4  
2026 MOUNTAIN GOAT Zone H of 5-4  
2026 MOOSE Zone D of 5-4  
2026 MOUNTAIN GOAT Zone A of 5-12  
2026 MOUNTAIN GOAT Zone E of 5-15  
2026 MOOSE Zone A of 7-38  
2026 MOOSE Zone B of 7-38  
2026 CARIBOU Zone A of 7-37  
2026 MOOSE Zone D of 6-25  
2026 MOOSE Zone E of 6-25  
2026 MOOSE Zone A of 6-25  
2026 MOOSE Zone A of 7-33  
2026 MOOSE Zone B of 7-33  
2026 MOOSE Zone A of 7-43  
2026 MOUNTAIN SHEEP Zone A of 6-20 .

## APPENDIX 3

### *1 The Management Unit Regulation, B.C. Reg. 64/96, is amended*

#### *(a) by repealing the following maps:*

East Central British Columbia  
North Eastern British Columbia  
North Western British Columbia  
South Eastern British Columbia  
South Western British Columbia  
West Central British Columbia , *and*

#### *(b) by adding the following maps:*







2026 Region 1 – Vancouver Island  
2026 Region 2 – Lower Mainland  
2026 Region 3 – Thompson  
2026 Region 4 – Kootenay  
2026 Region 5 – Cariboo  
2026 Region 6 – Skeena  
2026 Region 7a – Omineca  
2026 Region 7b – Peace  
2026 Region 8 – Okanagan .

# WILDLIFE ACT LIMITED ENTRY HUNTING REGULATION

2026

ELK

Zone D of 1-05

-  Limited Entry Hunting Area
-  Wildlife Management Unit
-  Indian Reserve
-  Provincial Park / Protected Area / Ecological Reserve
-  Regional or Local Park
-  Private Land \*

This map is a professional PDF that can be imported into mobile hardware such as a smartphone or tablet for viewing in their primary applications.

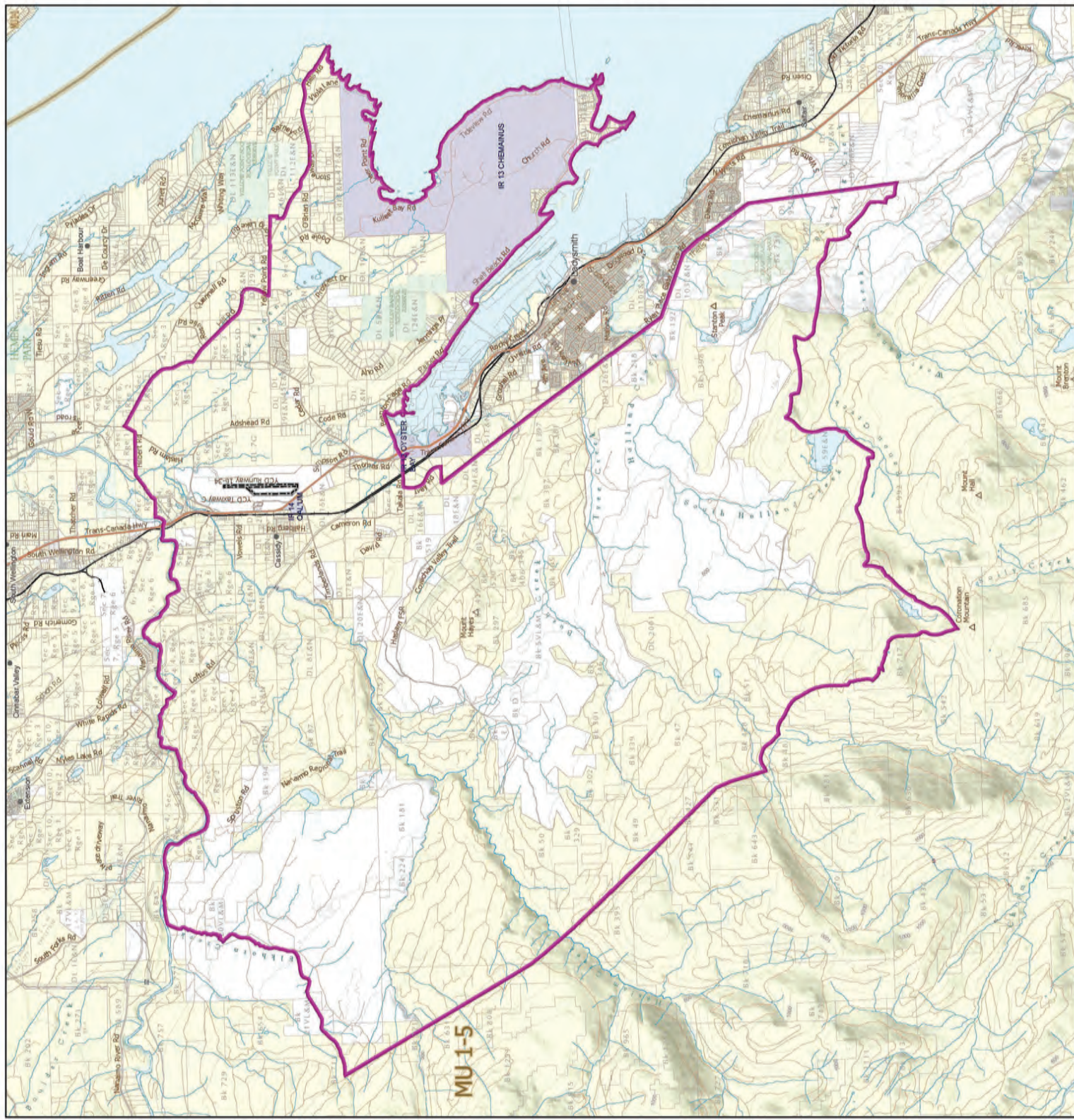
\*Land ownership is a visual representation of land parcels in ParcelMap BC. Contact the Land Title and Survey Authority for current information on land ownership.



Intended plot size for this map is 25x17 inches

Produced for: Wildlife and Ecosystems Branch

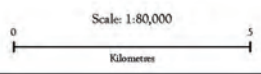
Produced by: GeoBC on 2026-02-24





**WILDLIFE ACT  
LIMITED ENTRY  
HUNTING REGULATION**  
2026  
ELK  
Zone A of 1-11

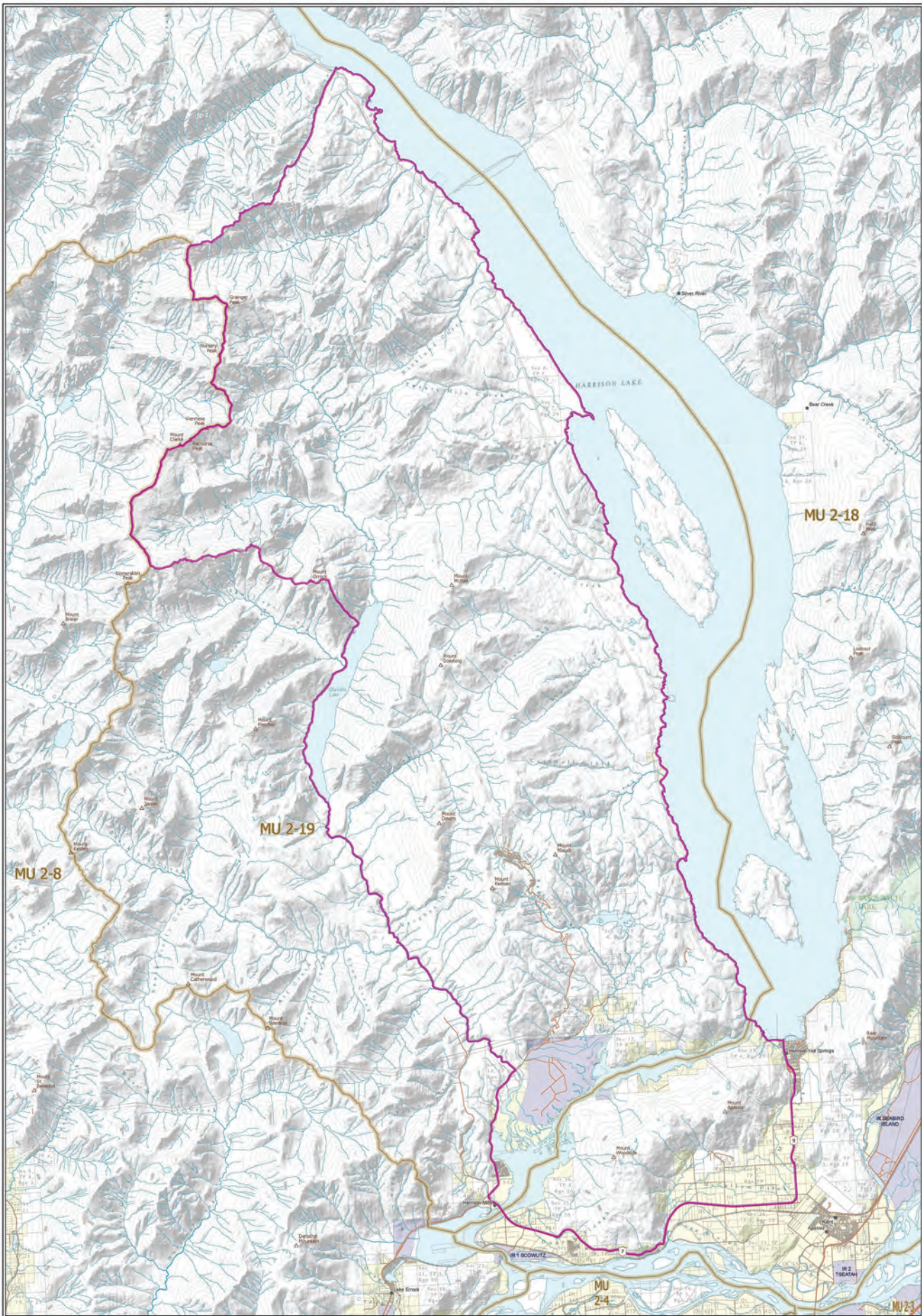
- ▬ Limited Entry Hunting Area
- Wildlife Management Unit
- Indian Reserve
- Provincial Park / Protected Area / Ecological Reserve
- Conservancy
- Private Land +



This map is a georeferenced PDF that can be imported into mobile hardware such as a smartphone or tablet for viewing in third party applications.  
\*Land ownership is a visual representation of land parcels in Proclivity BC. Contact the Land Title and Survey Authority for current information on land ownership.

Intended plot size for this map is 22x17 inches  
Produced for: Wildlife and Ecosystems Branch  
Produced by: GeoBC on 2026-02-24





**WILDLIFE ACT**  
**LIMITED ENTRY**  
**HUNTING REGULATION**  
 2026  
 ELK  
 Zone A of 2-19

- Limited Entry Hunting Area
- Wildlife Management Unit
- Indian Reserve
- Provincial Park / Protected Area / Ecological Reserve
- Regional or Local Park
- Wildlife Management Area / Conservation Area
- Private Land\*


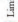

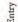
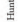


This map is a professional RFP that can be imported into mobile hardware such as a smartphone or tablet for viewing in field party applications.  
 \*Land ownership is a visual representation of land parcels in Powell River BC. Contact the Land Title and Survey Authority for current information on land ownership.  
 Intended plot size for this map is 34x22 inches  
 Produced for Wildlife and Ecoversure Branch  
 Produced by GeoBC on 2024-02-24



**WILDLIFE ACT  
LIMITED ENTRY  
HUNTING REGULATION**

2026  
ELK  
Zone A of 2-09

-  Limited Entry Hunting Area
-  Wildlife Management Unit
-  Indian Reserve
-  Provincial Park / Protected Area / Ecological Reserve
-  Private Land \*

\*This map is a preliminary map for information purposes only. It is not intended to be used as a legal document. For more information, please contact the Ministry of Forests, Lands, Natural Heritage and Heritage.

\*Land ownership is a visual representation of land parcels in British Columbia. Current land use is shown in yellow for current information on land ownership.

Scale: 1:75,000  
Intended plot size for this map is 5x22 inches  
Produced for: Wildlife and Ecosystems Branch  
Published by: October 2024 (240924)









# WILDLIFE ACT LIMITED ENTRY HUNTING REGULATION

2026

ELK

Zone C of 208

-  Limited Entry Hunting Area
-  Wildlife Management Unit
-  Provincial Park / Protected Area / Ecological Reserve
-  Private Land \*

This map is a professional PDF that can be imported into mobile hardware such as a smartphone or tablet for viewing in their primary application.  
\*Land ownership is a visual representation of land parcels in ParcelMap BC. Contact the Land Title and Survey Authority for current information on land ownership.

Scale: 1:80,000  
0 5  
Kilometres





Intended plot size for this map is 22x17 inches  
Produced for: Wildlife and Ecosystems Branch  
Produced by: GeoBC on 2026-02-24



# WILDLIFE ACT LIMITED ENTRY HUNTING REGULATION

2026

## MOUNTAIN GOAT Zone A of 4-26

-  Limited Entry Hunting Area
-  Wildlife Management Unit
-  Provincial Park / Protected Area / Ecological Reserve
-  Private Land \*

This map is a georeferenced PDF that can be imported into mobile hardware such as a smartphone or tablet for viewing in their party applications.  
\*Land ownership is a visual representation of land parcels in British Columbia. Contact the Land Title and Survey Authority for current information on land ownership.



Intended plot size for this map is 22x17 inches  
Produced for: Wildlife and Ecosystems Branch  
Produced by: GeoBC on 2025-03-09



**WILDLIFE ACT**  
**LIMITED ENTRY**  
**HUNTING REGULATION**  
 2026  
**MOUNTAIN GOAT**  
 Zone C of 4-20

- Limited Entry Hunting Area
- Wildlife Management Unit
- Indian Reserve
- Provincial Park / Protected Area / Ecological Reserve
- Regional or Local Park
- Private Land \*

This map is a preliminary draft. It is for information purposes only and should not be used as a basis for any legal action. It is subject to change without notice.  
 \*Land ownership is a visual approximation of land parcels in British Columbia.  
 Consult the Land Title and Survey Authority for current information on land ownership.

Scale: 1:60,000  
 Intended size for this map is 54x22 inches  
 Produced for Wildlife and Ecoprocess Research  
 Produced by GIBCO on 2025/05/20









# WILDLIFE ACT LIMITED ENTRY HUNTING REGULATION

2026

ELK

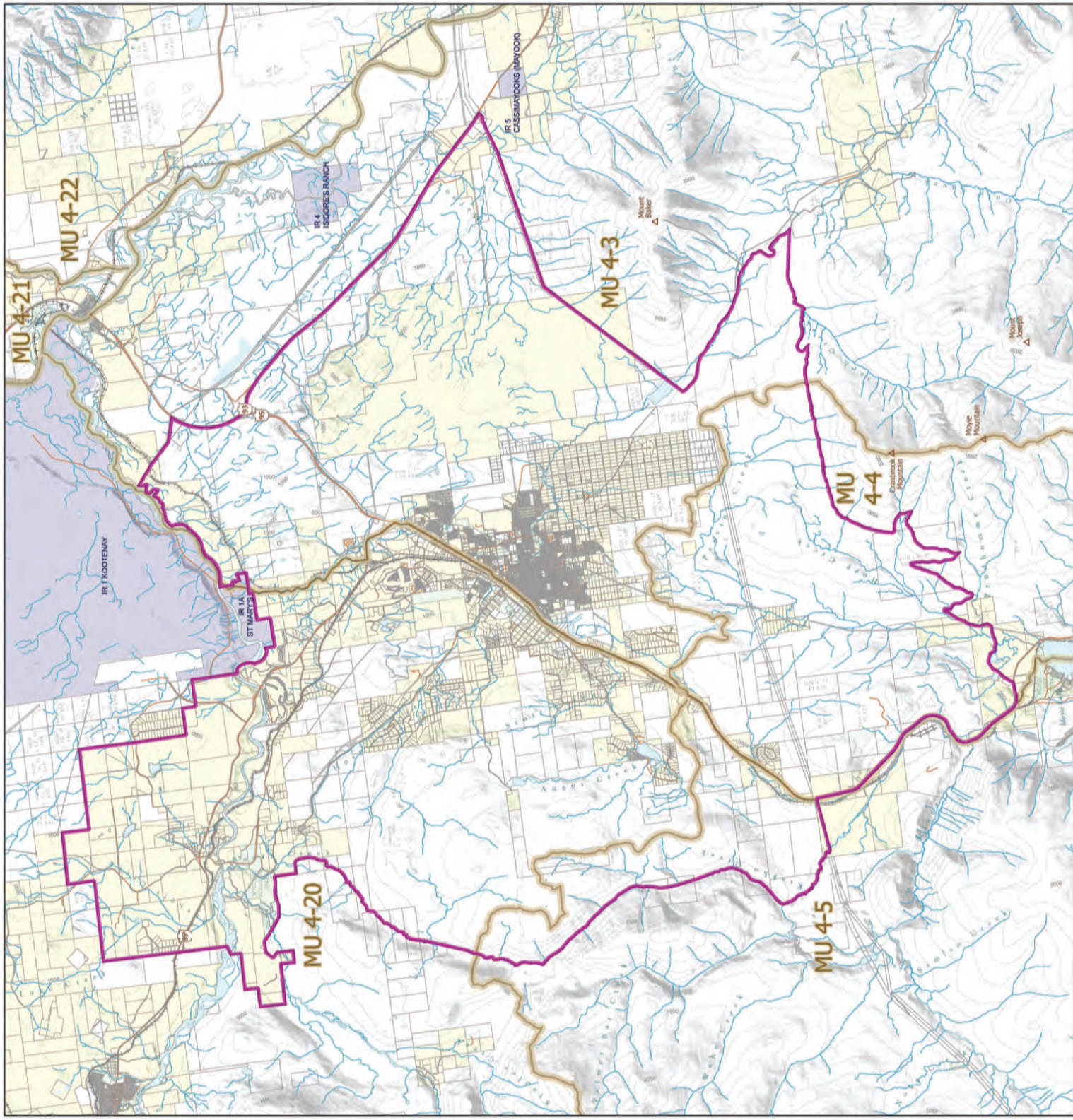
Zone I of 403

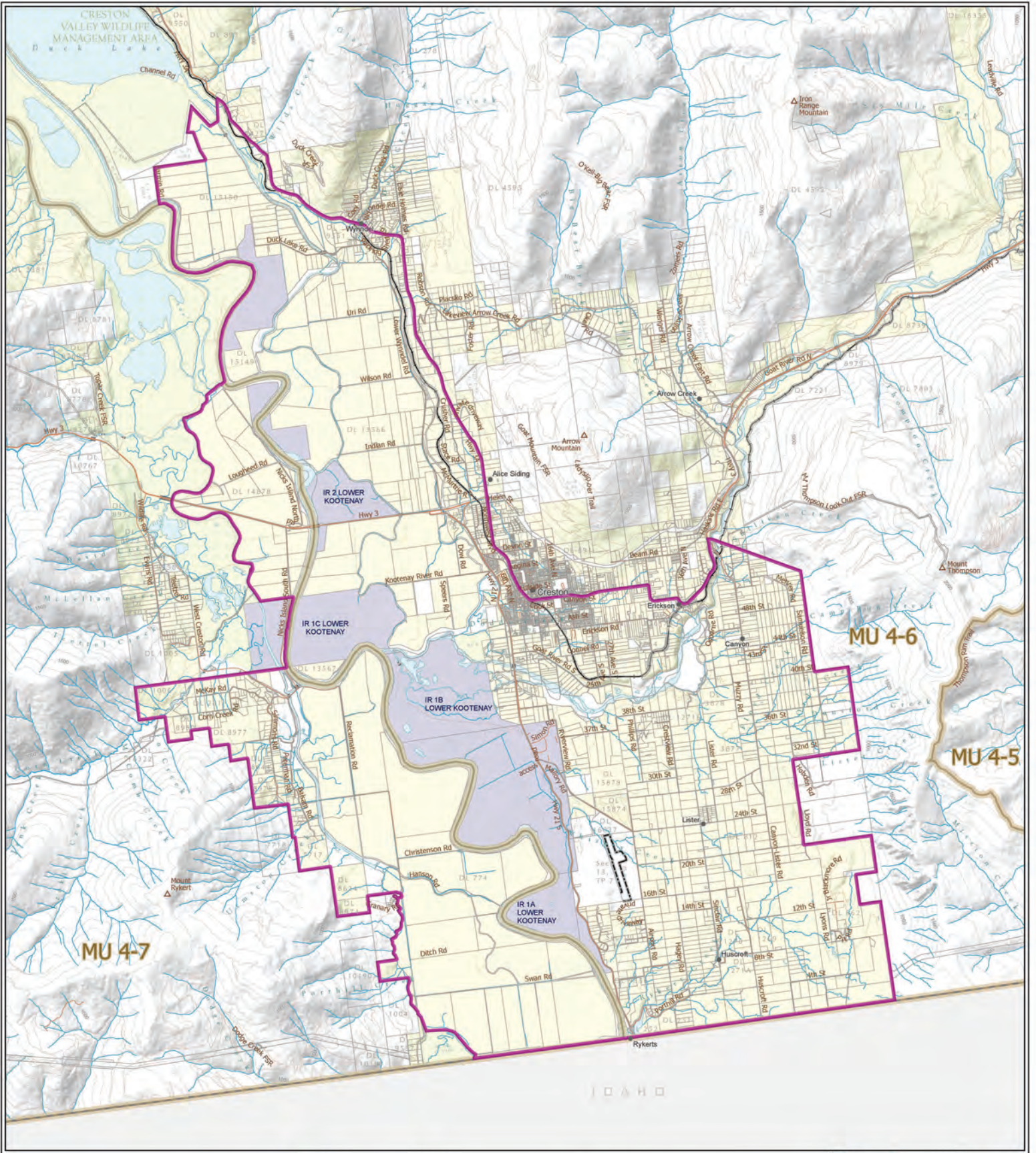
-  Limited Entry Hunting Area
-  Wildlife Management Unit
-  Indian Reserve
-  Provincial Park / Protected Area / Ecological Reserve
-  Regional or Local Park
-  Private Land \*

This map is a georeferenced PDF file and can be imported into mobile hardware such as a smartphone or tablet for viewing in their party applications.  
\*Land ownership is a visual representation of land parcels in Parochial BC.  
Contact the Land Title and Survey Authority for current information on land ownership.



Intended plot size for this map is 22x17 inches  
Produced for: Wildlife and Ecosystems Branch  
Produced by: GeoBC on 20200223





# WILDLIFE ACT LIMITED ENTRY HUNTING REGULATION

2026  
ELK  
Zone B of 406

- Limited Entry Hunting Area
- Wildlife Management Unit
- Indian Reserve
- Regional or Local Park
- Wildlife Management Area / Conservation Area
- Private Land \*



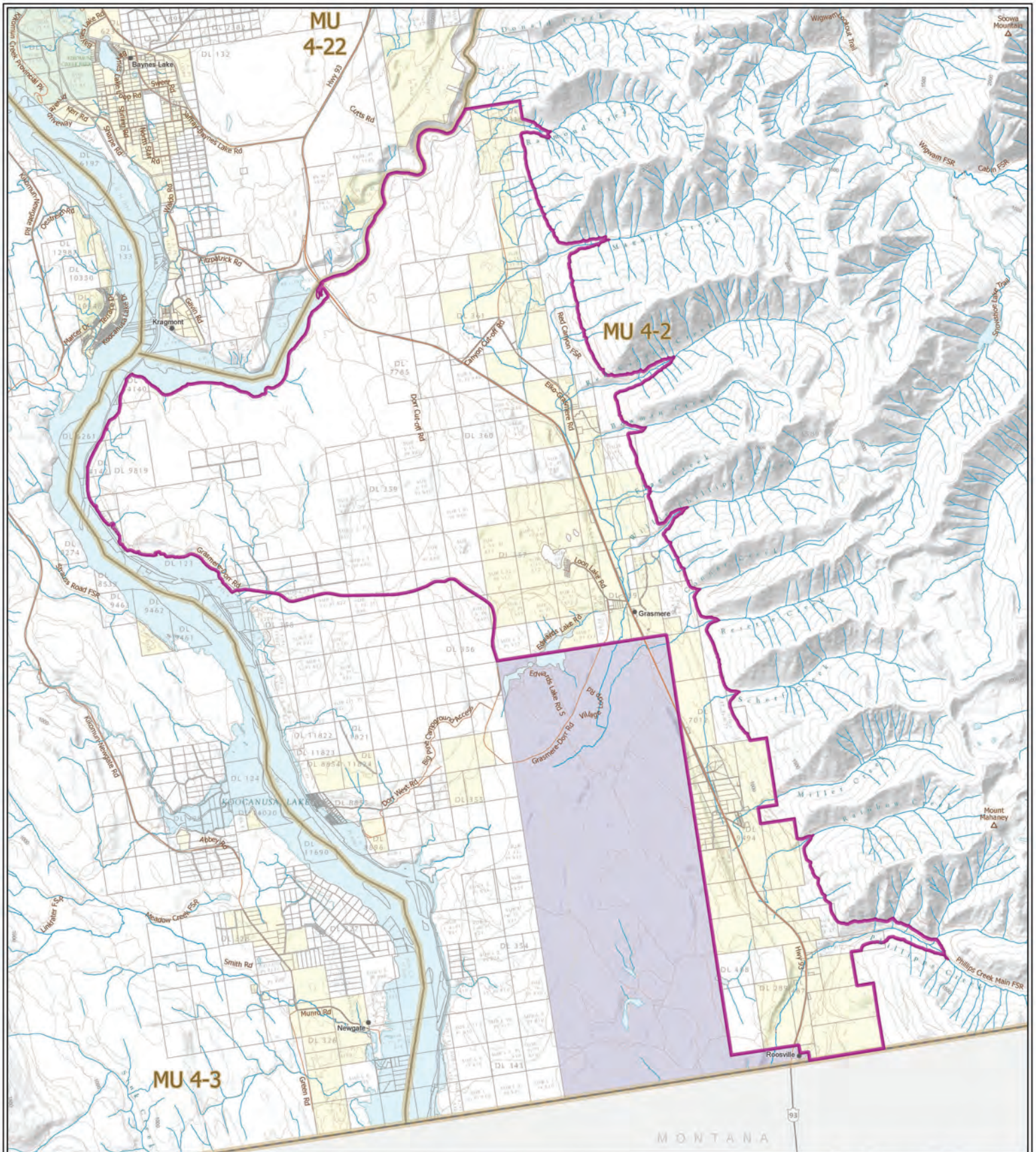
This map is a georeferenced PDF that can be imported into mobile hardware such as a smartphone or tablet for viewing in third party applications.

\*Land ownership is a visual representation of land parcels in ParcelMap BC. Contact the Land Title and Survey Authority for current information on land ownership.

Intended plot size for this map is 22x17 inches

Produced for: Wildlife and Ecosystems Branch  
Produced by: GeoBC on 202602-23

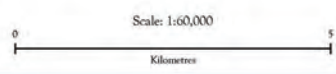




# WILDLIFE ACT LIMITED ENTRY HUNTING REGULATION

2026  
ELK  
Zone C of 402

- ▬ Limited Entry Hunting Area
- Wildlife Management Unit
- Indian Reserve
- Provincial Park / Protected Area / Ecological Reserve
- Private Land \*



This map is a georeferenced PDF that can be imported into mobile hardware such as a smartphone or tablet for viewing in third party applications.  
\*Land ownership is a visual representation of land parcels in ParcelMap BC. Contact the Land Title and Survey Authority for current information on land ownership.

Intended plot size for this map is 22x17 inches  
Produced for: Wildlife and Ecosystems Branch  
Produced by: GeoBC on 2026-02-23









# WILDLIFE ACT LIMITED ENTRY HUNTING REGULATION

2026

ELK

Zone E of 4-22

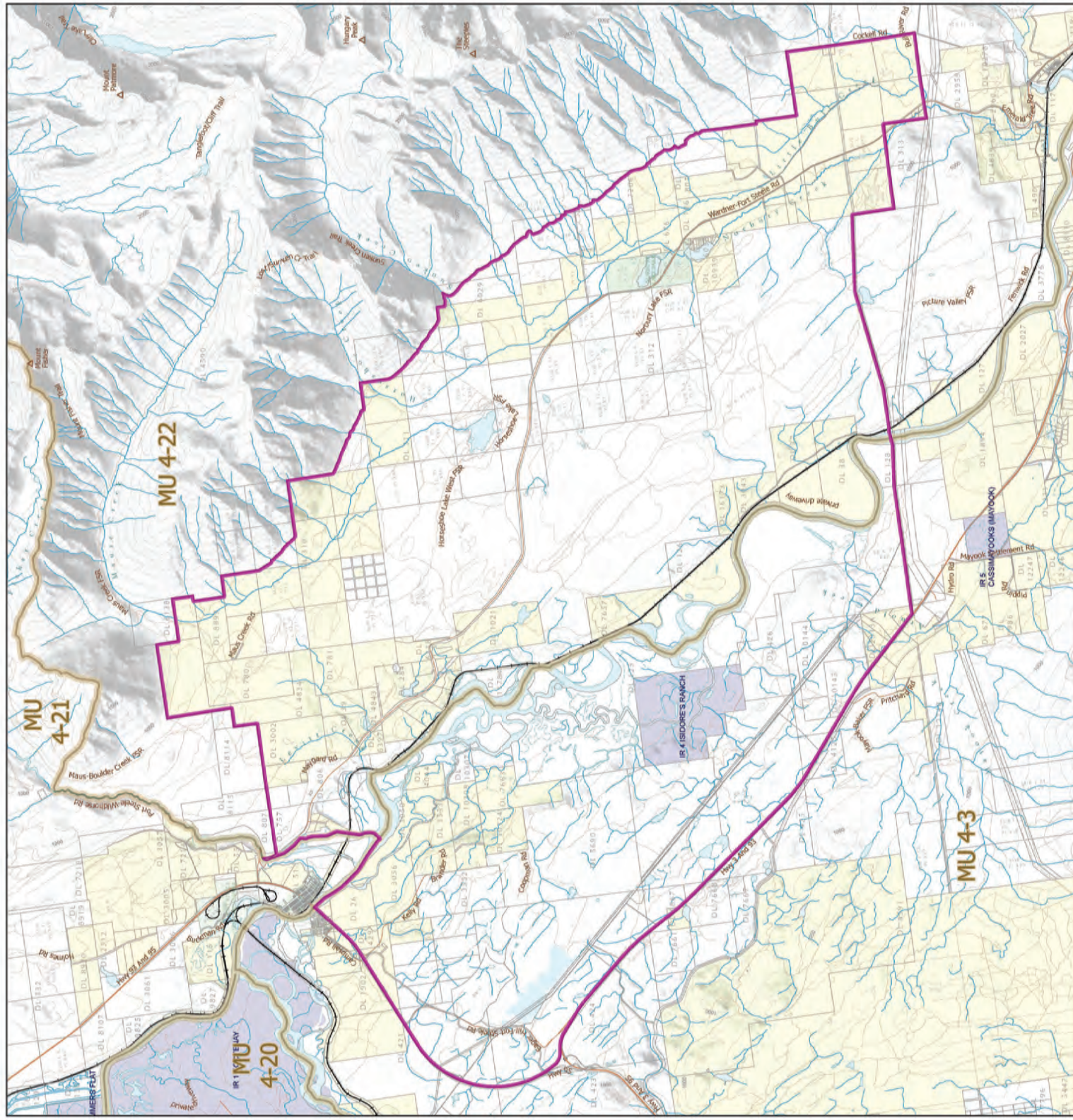
-  Limited Entry Hunting Area
-  Wildlife Management Unit
-  Indian Reserve
-  Provincial Park / Protected Area / Ecological Reserve
-  Regional or Local Park
-  Private Land \*

This map is a georeferenced PDF that can be imported into mobile hardware such as a smartphone or tablet for viewing in their party applications.

\*Land ownership is a visual representation of land parcels in ParcelMap BC. Contact the Land Title and Survey Authority for current information on land ownership.



Intended plot size for this map is 22x17 inches  
Produced for: Wildlife and Ecosystems Branch  
Produced by: GeoBC on 20250210





**WILDLIFE ACT**  
**LIMITED ENTRY**  
**HUNTING REGULATION**  
 2026  
**MOUNTAIN SHEEP**  
 Zone C of 504


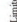
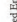
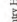
- Limited Entry Hunting Area
- Wildlife Management Unit
- Provincial Park / Protected Area / Ecological Reserve
- Private Land \*



This map is a professional FOP that can be reported into wildlife licenses such as a mountain sheep or rabbit for hunting in that party application.  
 \*Land ownership is a visual representation of land parcels in British Columbia. Contact the Land Title and Survey Authority for current information on land ownership.  
 Intended plot size for this map is 34x22 inches  
 Produced for Wildlife and Ecoversure Branch  
 Produced by GeoBC on 2024-02-24



**WILDLIFE ACT  
LIMITED ENTRY  
HUNTING REGULATION  
2026  
MOUNTAIN GOAT  
Zone H of 504**

-  Limited Entry Hunting Area
-  Wildlife Management Unit
-  Provincial Park / Protected Area / Ecological Reserve
-  Private Land \*

This map is intended for use by hunters from outside British Columbia as a reference to select areas in their entry application.  
\*Land ownership is visual representation and does not constitute a legal survey.  
Contact the Land Use Survey Division for current information on land ownership.

Scale: 1:75,000  
Intended plot size for this map is 5x2.2 inches  
Produced for Wildlife and Ecosystems Branch  
Published by: October 2024 (240424)





**WILDLIFE ACT**  
**LIMITED ENTRY**  
**HUNTING REGULATION**  
 2026  
**MOOSE**  
 Zone D of 504

- Limited Entry Hunting Area
- Wildlife Management Unit
- Indian Reserve
- Provincial Park / Protected Area / Ecological Reserve
- Wildlife Management Area / Conservation Area
- Private Land\*






This map is a professional RFP that can be reported into wildlife licenses such as a moose license or table for carving in third party application.  
 \*Land ownership is a visual representation of land parcels in British Columbia. Contact the Land Title and Survey Authority for current information on land ownership.  
 Intended plot size for this map is 34x22 inches  
 Produced for Wildlife and Environment Branch  
 Produced by GeoBC on 2024-02-24



# WILDLIFE ACT LIMITED ENTRY HUNTING REGULATION

2026

## MOUNTAIN GOAT Zone A of 5-12

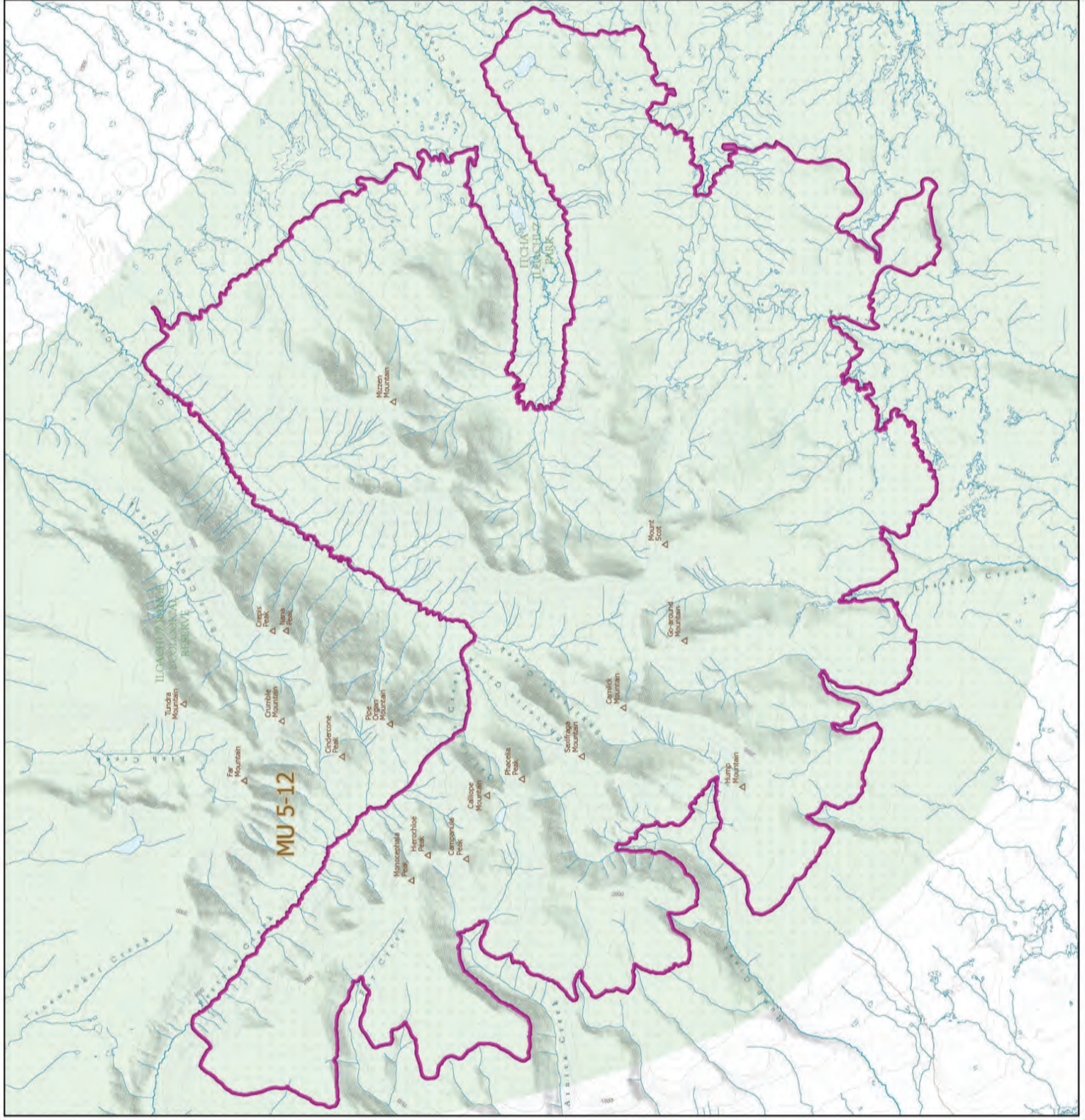
-  Limited Entry Hunting Area
-  Wildlife Management Unit
-  Provincial Park / Protected Area / Ecological Reserve

This map is a professional PDF that can be imported into mobile hardware such as a smartphone or tablet for viewing in their primary application.

\*Land ownership is a visual representation of land parcels in ParcelMap BC. Contact the Land Title and Survey Authority for current information on land ownership.



Intended plot size for this map is 25x17 inches  
Produced for: Wildlife and Ecosystems Branch  
Produced by: GeoBC on 2025-02-24



**WILDLIFE ACT**  
**LIMITED ENTRY**  
**HUNTING REGULATION**  
 2026  
**MOUNTAIN GOAT**  
 Zone E of 5-15

- Limited Entry Hunting Area
- Wildlife Management Unit
- Provincial Park / Protected Area / Ecological Reserve
- Private Land\*

This map is intended for use by hunters from outside British Columbia as a reference to assist in their entry application.  
 \*Land ownership is a visual representation of land parcels in British Columbia. Contact the land title and survey website for current information on land ownership.



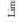


Scale: 1:60,000  
 Intended paper size for this map is 54x22 inches  
 Produced for Wildlife and Ecosystems Branch  
 Prepared by: October 2024/2025





**WILDLIFE ACT  
LIMITED ENTRY  
HUNTING REGULATION**

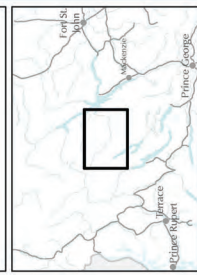
2026  
**MOOSE**  
Zone B of 738

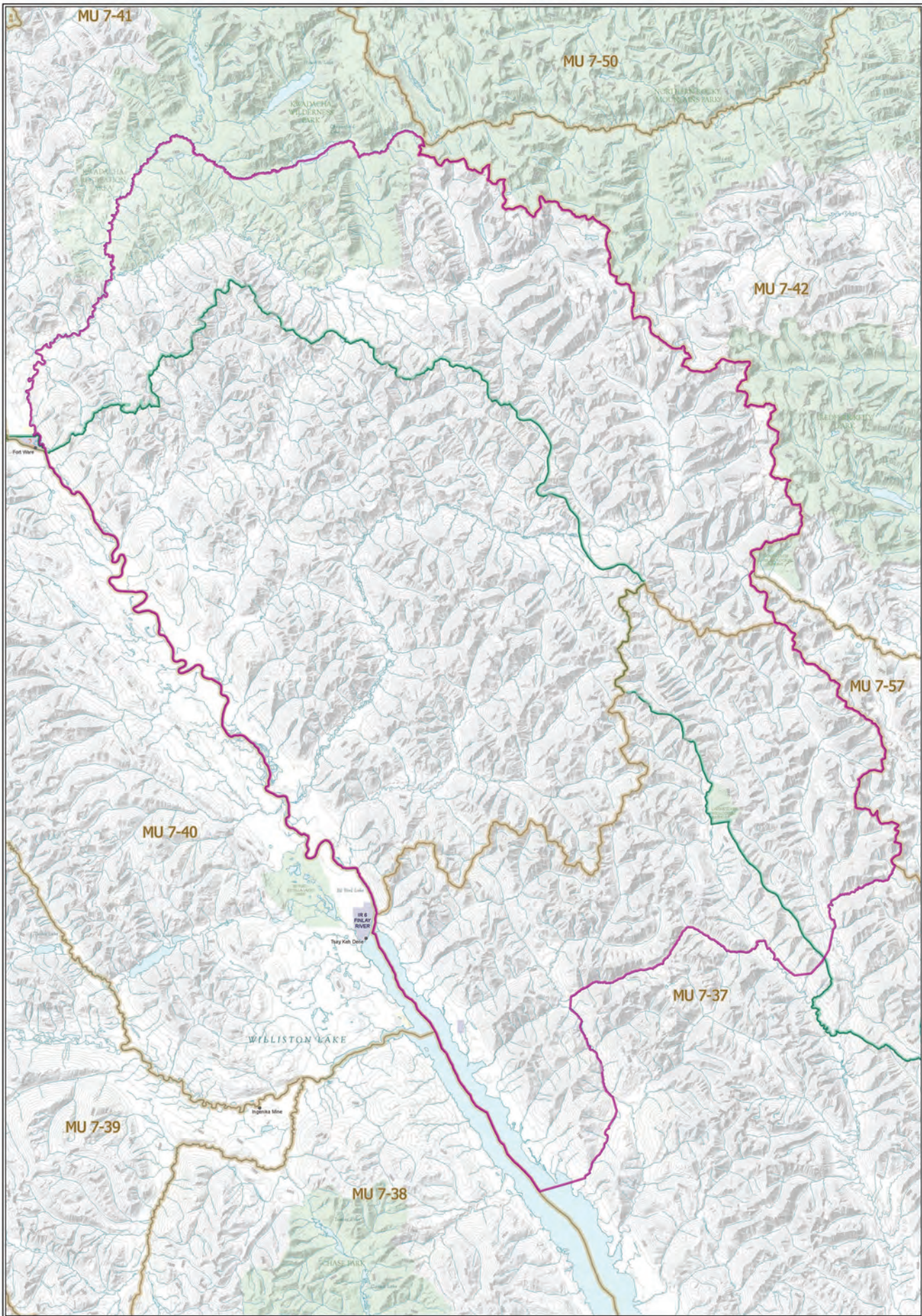
-  Limited Entry Hunting Area
-  Wildlife Management Unit
-  Indian Reserve
-  Provincial Park / Protected Area / Ecological Reserve
-  Private Land \*

This map is a preliminary file for use by licensees to make boundary such as a  
map or a chart for use in their entry application.  
\*Land ownership is visual representation and does not exist in British Columbia.  
Contact the Land Use Survey Division for current information on land ownership.

Scale: 1:200,000  
0 1 2 3 4 5  
kilometers

Intended for use for this map is 5x22 inches  
Produced for Wildlife and Ecovisions Branch  
Revised by: October 2024





**WILDLIFE ACT**  
**LIMITED ENTRY**  
**HUNTING REGULATION**  
 2026  
**CARIBOU**  
 Zone A of 7-37

- Limited Entry Hunting Area
- Wildlife Management Unit
- Muskwa-Kechika Management Area
- Indian Reserve
- Provincial Park / Protected Area / Ecological Reserve
- Regional or Local Park
- Private Land\*



This map is a professional PDF that can be imported into mobile hardware such as a smartphone or tablet for viewing in that party application.  
 \*Land ownership is a visual representation of land parcels in PeaceBy BC. Contact the Land Title and Survey Authority for current information on land ownership.

Intended plot size for this map is 34x22 inches  
 Produced for Wildlife and Ecoversus Branch  
 Produced by GeoBC on 2024-02-27



**WILDLIFE ACT**  
**LIMITED ENTRY**  
**HUNTING REGULATION**

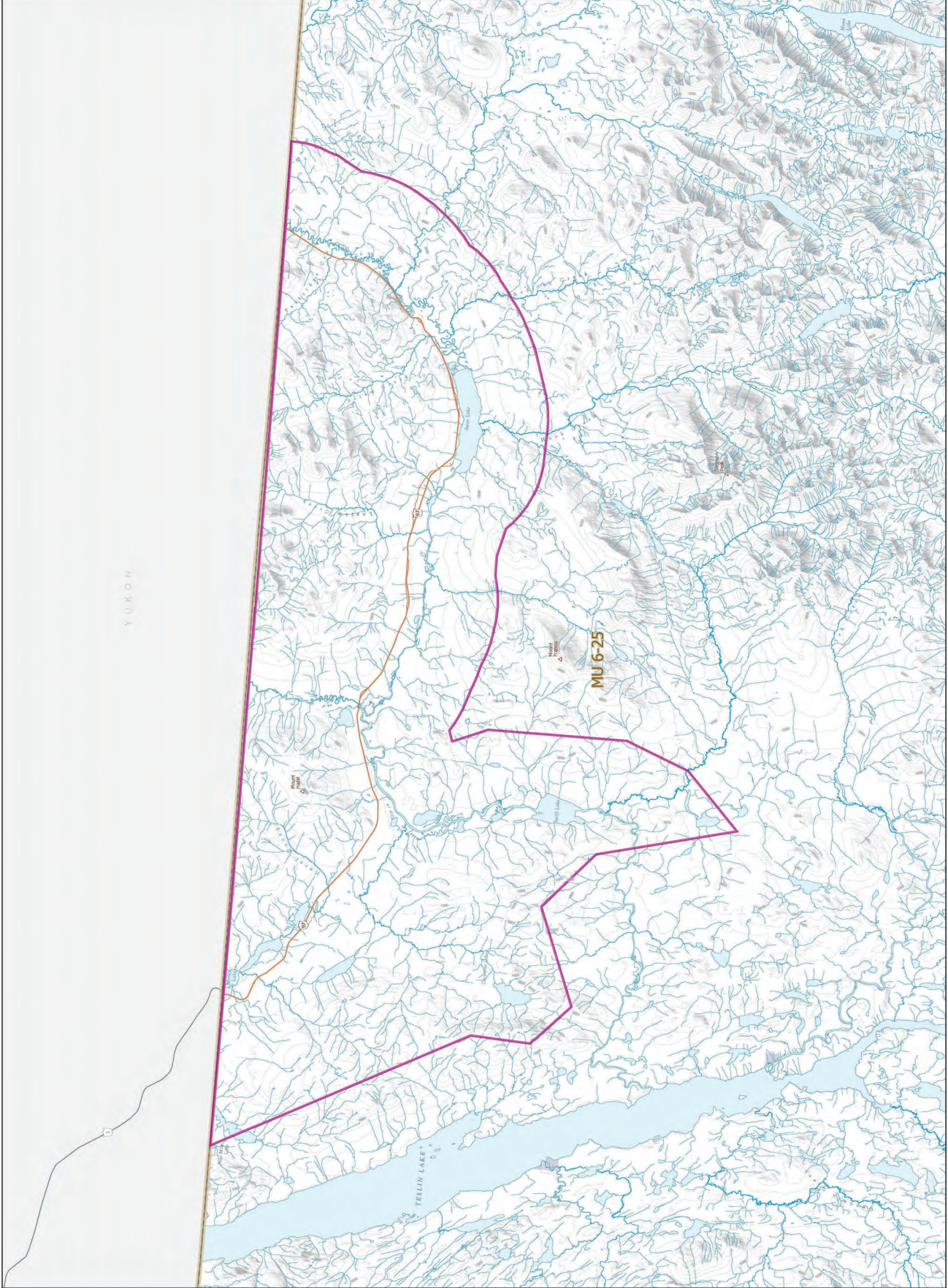
2026  
**MOOSE**  
Zone D of 625

- Limited Entry Hunting Area
- Wildlife Management Unit
- Indian Reserve

This map is produced for the use by persons who make neither such a representation or claim for accuracy in their own publications.  
\*Land ownership is a visual representation of land parcels in Facebook BC.  
Contact the Land Use Survey Division for current information on land ownership.

Scale: 1:250,000  
0 1 2 3 4 5  
Kilometers

Intended paper size for this map is A4 (210x297 mm)  
Produced for Wildlife and Ecoparks Branch  
Published by: October 2025 (05/2025)





**WILDLIFE ACT**  
**LIMITED ENTRY**  
**HUNTING REGULATION**  
 2026  
**MOOSE**  
 Zone E of 6-25

- Limited Entry Hunting Area
- Wildlife Management Unit
- Indian Reserve
- Provincial Park / Protected Area / Ecological Reserve
- Conservancy









This map is a professional PDF that can be imported into mobile hardware such as a smartphone or tablet for viewing in that party application.  
 \*Total accuracy is ± visual representation of best practice in PostMap BC. Contact the Land Title and Survey Authority for current information on land ownership.  
 Intended plot size for this map is 34.22 inches  
 Produced for Wildlife and Ecovision Research  
 Produced by GeoBC on 2026-03-06



**WILDLIFE ACT  
LIMITED ENTRY  
HUNTING REGULATION**

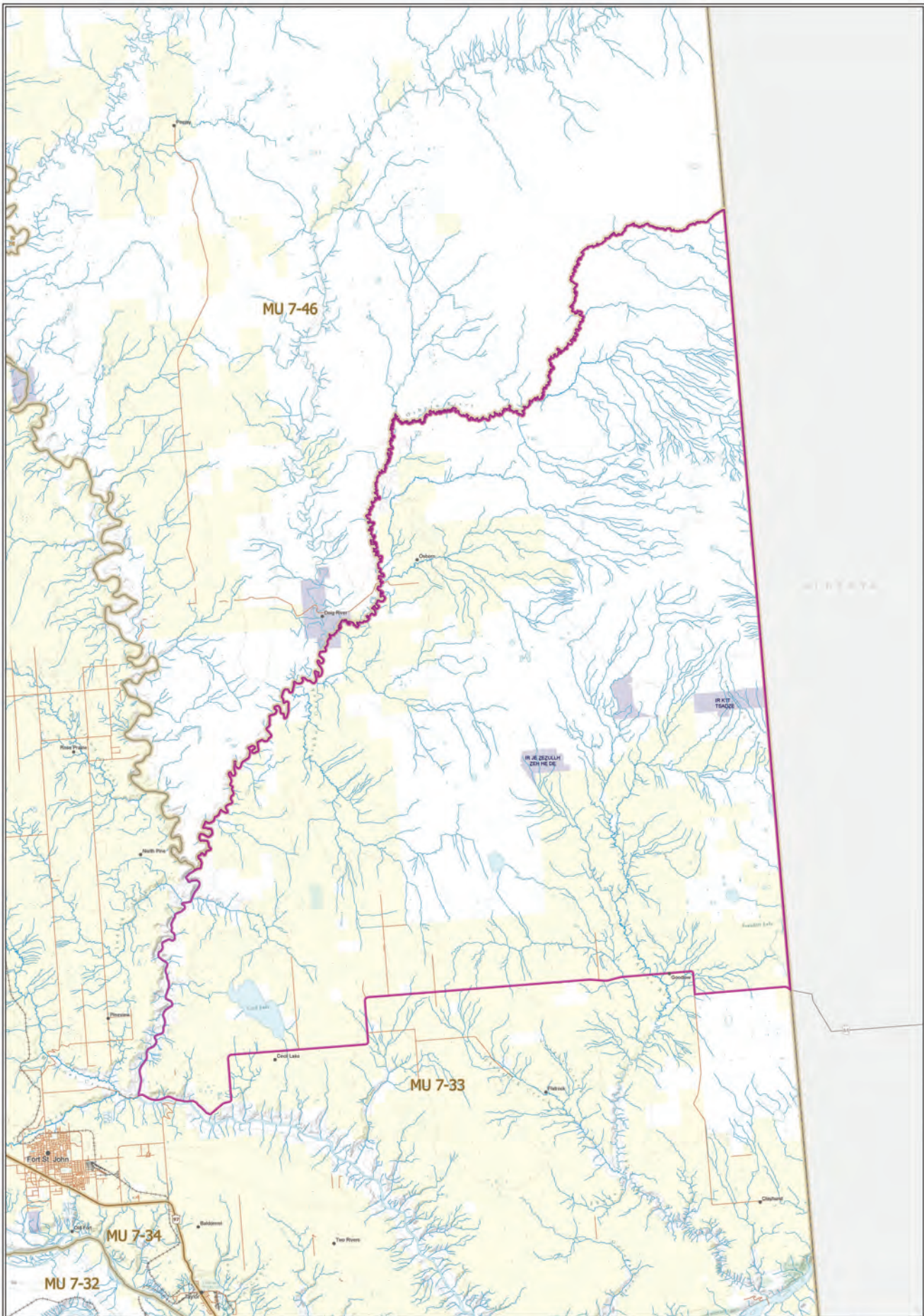
2026  
**MOOSE**  
Zone A of 625

-  Limited Entry Hunting Area
-  Wildlife Management Unit
-  Indian Reserve
-  Provincial Park / Protected Area / Ecological Reserve
-  Conservancy
-  Private Land\*

\*Land ownership is a visual representation of land parcels in British Columbia. Current land title and survey information for current information on land ownership.

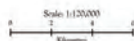
Scale: 1:100,000  
Intended paper size for this map is A4x22 inches  
Produced for Wildlife and Ecoparks Branch  
Published by: October 2024/24/25





**WILDLIFE ACT**  
**LIMITED ENTRY**  
**HUNTING REGULATION**  
 2026  
**MOOSE**  
 Zone A of 7-33

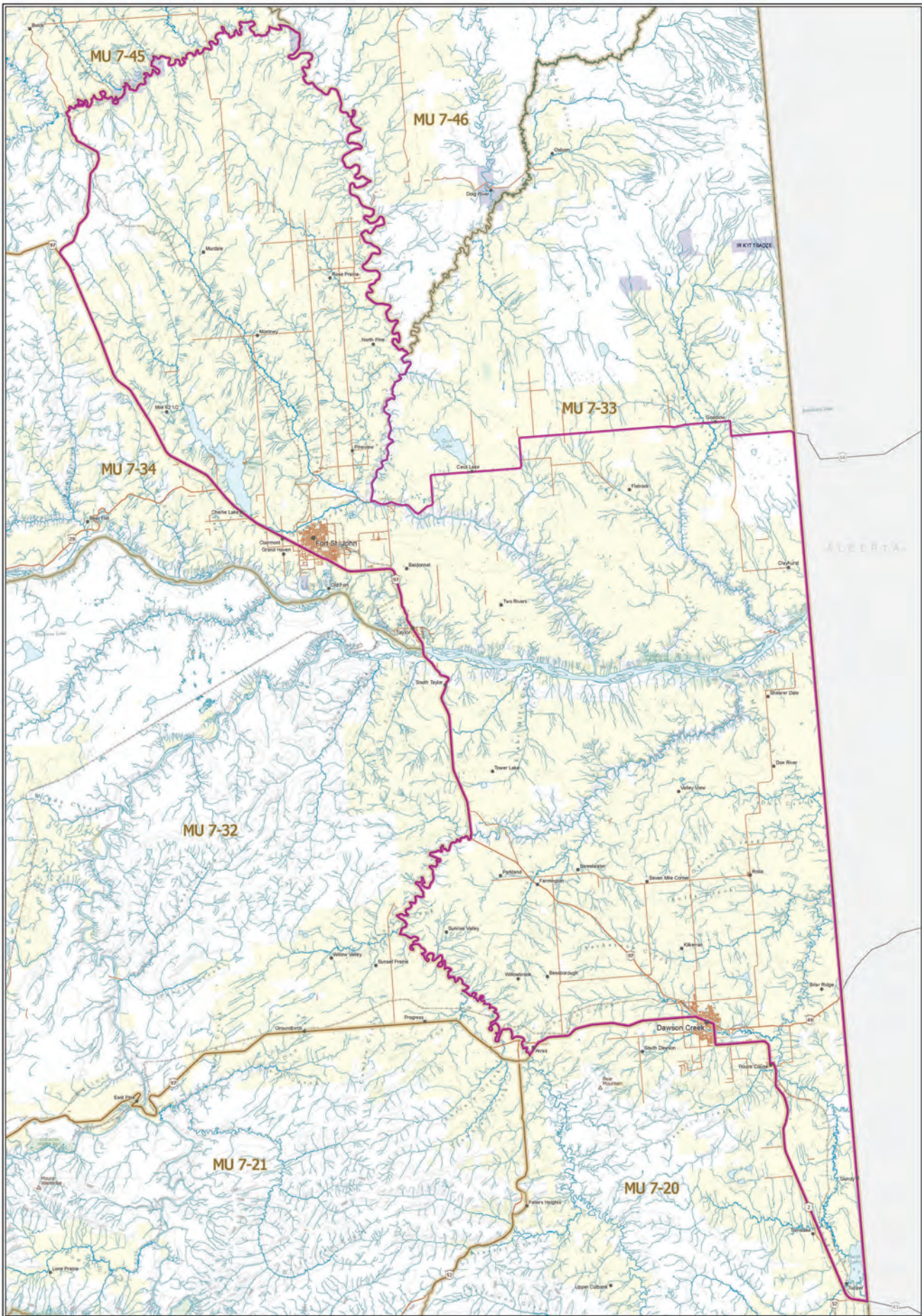
- ▬ Limited Entry Hunting Area
- Wildlife Management Unit
- Indian Reserve
- Provincial Park / Protected Area / Ecological Reserve
- Regional or Local Park
- Private Land\*



This map is a generalized PVE that can be targeted into suitable landscape such as a  
 riparian or timber for viewing in field party applications.  
 \*Land ownership is not an indication of land title in British Columbia. Contact  
 the Land Title and Survey Authority for current information on land ownership.

Intended plot size for this map is 3422 inches  
 Produced for Wildlife and Ecosystems Branch  
 Produced by GeoBC on 202405-11





**WILDLIFE ACT**  
**LIMITED ENTRY**  
**HUNTING REGULATION**  
 2026  
**MOOSE**  
 Zone B of 7-33

- Limited Entry Hunting Area
- Wildlife Management Unit
- Indian Reserve
- Provincial Park / Protected Area / Ecological Reserve
- Regional or Local Park
- Private Land\*



This map is a professional FPV that can be reported into wildlife licenses such as a moose license or rabbit hunting to third party applications.  
 \*Total ownership is a visual representation of land parcels in PeaceAyr BC. Contact the Land Title and Survey Authority for current information on land ownership.

Intended plot size for this map is 34x22 inches  
 Produced for Wildlife and Ecotourism Branch  
 Produced by WildBC on 5/20/2026

