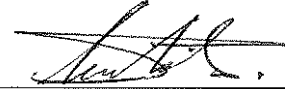


PROVINCE OF BRITISH COLUMBIA
ORDER OF THE LIEUTENANT GOVERNOR IN COUNCIL

Order in Council No.

188

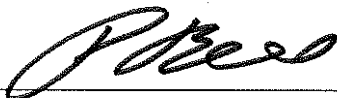
, Approved and Ordered **APR - 2 2008**



Lieutenant Governor

Executive Council Chambers, Victoria

On the recommendation of the undersigned, the Lieutenant Governor, by and with the advice and consent of the Executive Council, orders that, effective April 15, 2008, the attached North American Gypsy Moth Eradication Regulation, 2008 is made.



Minister of Agriculture and Lands



Presiding Member of the Executive Council

(This part is for administrative purposes only and is not part of the Order.)

Authority under which Order is made:

Act and section:- Plant Protection Act, R.S.B.C. 1996, c. 365, ss. 3 (d) and 8

Other (specify):- _____

February 19, 2008

page 1 of 3

R/142/2008/4

NORTH AMERICAN GYPSY MOTH ERADICATION REGULATION, 2008

Definitions

- 1 In this regulation:
- “**Btk**” means the bacterial insecticide *Bacillus thuringiensis* var. *kurstaki*;
 - “**spray eradication zone**” means an area referenced in column 1 of the Spray Eradication Table;
 - “**trap eradication zone**” means an area referenced in column 1 of the Trap Eradication Table;
 - “**gypsy moth**” means the North American gypsy moth.

Eradication of the gypsy moth

- 2 (1) Subject to subsection (2), an inspector may do the following in a spray eradication zone during the period set out in column 2 of the Spray Eradication Table opposite the spray eradication zone:
- (a) enter on land in order to carry out an activity referred to in paragraph (b) or (c);
 - (b) search for and remove gypsy moth eggs;
 - (c) apply Btk.
- (2) An inspector may apply Btk in a spray eradication zone only if
- (a) the application is done in accordance with the *Integrated Pest Management Act* and its regulations, and
 - (b) the inspector is licensed under that Act.
- (3) An inspector may do the following in a trap eradication zone during the period set out in column 2 of the Trap Eradication Table opposite the trap eradication zone:
- (a) enter on land in order to carry out an activity referred to in paragraph (b) or (c);
 - (b) search for gypsy moths;
 - (c) set or retrieve traps for gypsy moths.

Spray Eradication Table

Item	Column 1 Spray Eradication Zones	Column 2 Applicable Periods of Time
1	Saltair Spray Eradication Zone (ground spray), comprising the area outlined in black on the map referenced as Saltair Eradication Zone (ground spray) in Appendix 1 to this regulation	April 15, 2008 to June 20, 2008
2	Saltspring Island Spray Eradication Zone (ground spray), comprising the area outlined in black on the map referenced as Saltspring Eradication Zone (ground spray) in Appendix 1 to this regulation	April 15, 2008 to June 20, 2008

Trap Eradication Table

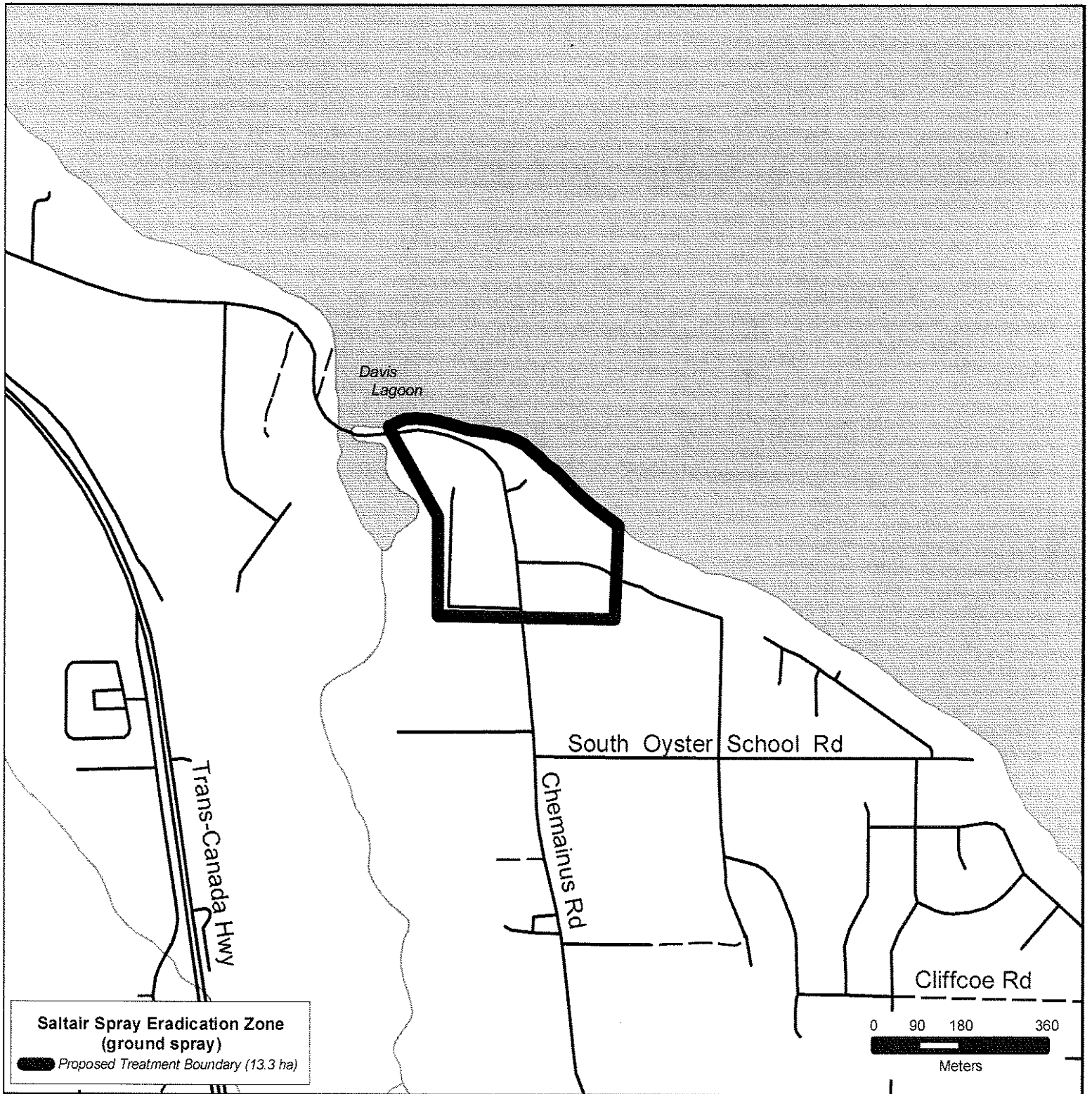
Item	Column 1 Trap Eradication Zones	Column 2 Applicable Periods of Time
1	Lake Cowichan Trap Eradication Zone (mass trapping), comprising the area outlined in black on the map referenced as Lake Cowichan Eradication Zone (mass trapping) in Appendix 2 to this regulation	June 20, 2008 to Oct. 30, 2008
2	Saltair Trap Eradication Zone (mass trapping), comprising the area outlined in black on the map referenced as Saltair Eradication Zone (mass trapping) in Appendix 2 to this regulation	June 20, 2008 to Oct. 30, 2008
3	Saltspring Island Trap Eradication Zone (mass trapping), comprising the area outlined in black on the map referenced as Saltspring Eradication Zone (mass trapping) in Appendix 2 to this regulation	June 20, 2008 to Oct. 30, 2008

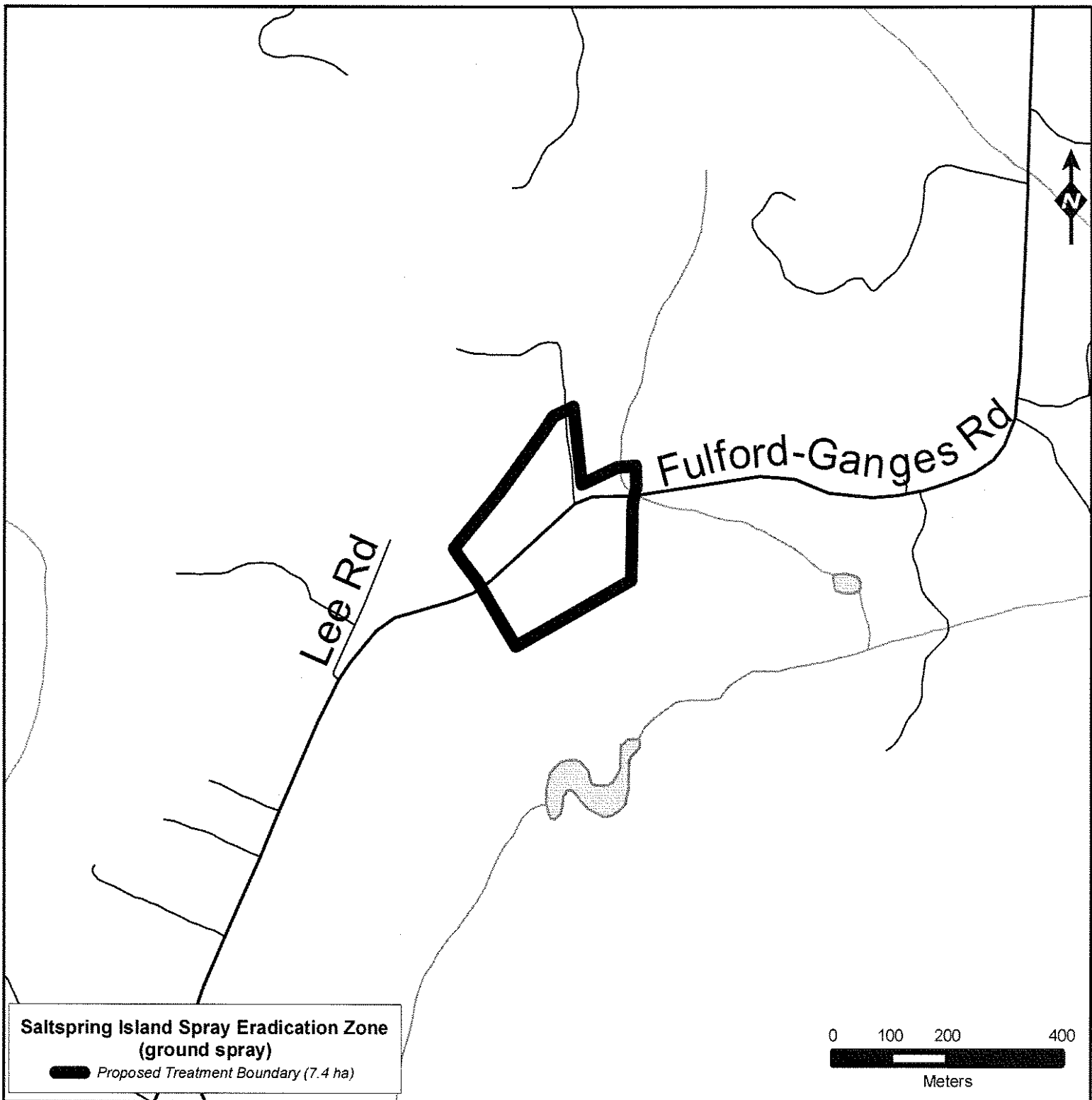
APPENDIX 1

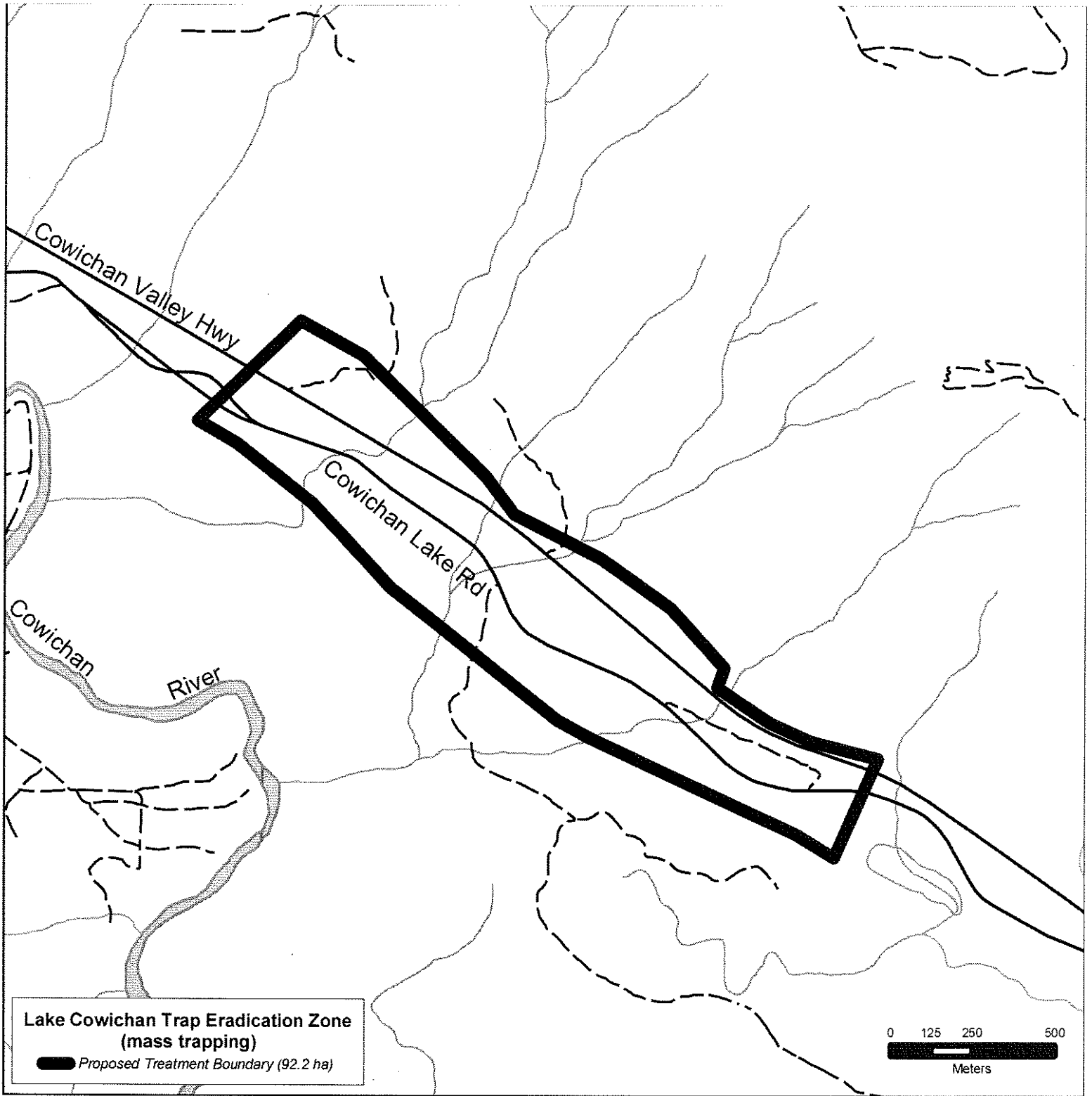
- 1 The following spray eradication zones are shown on the attached maps:
 - (a) Saltair Eradication Zone (ground spray);
 - (b) Saltspring Island Eradication Zone (ground spray).

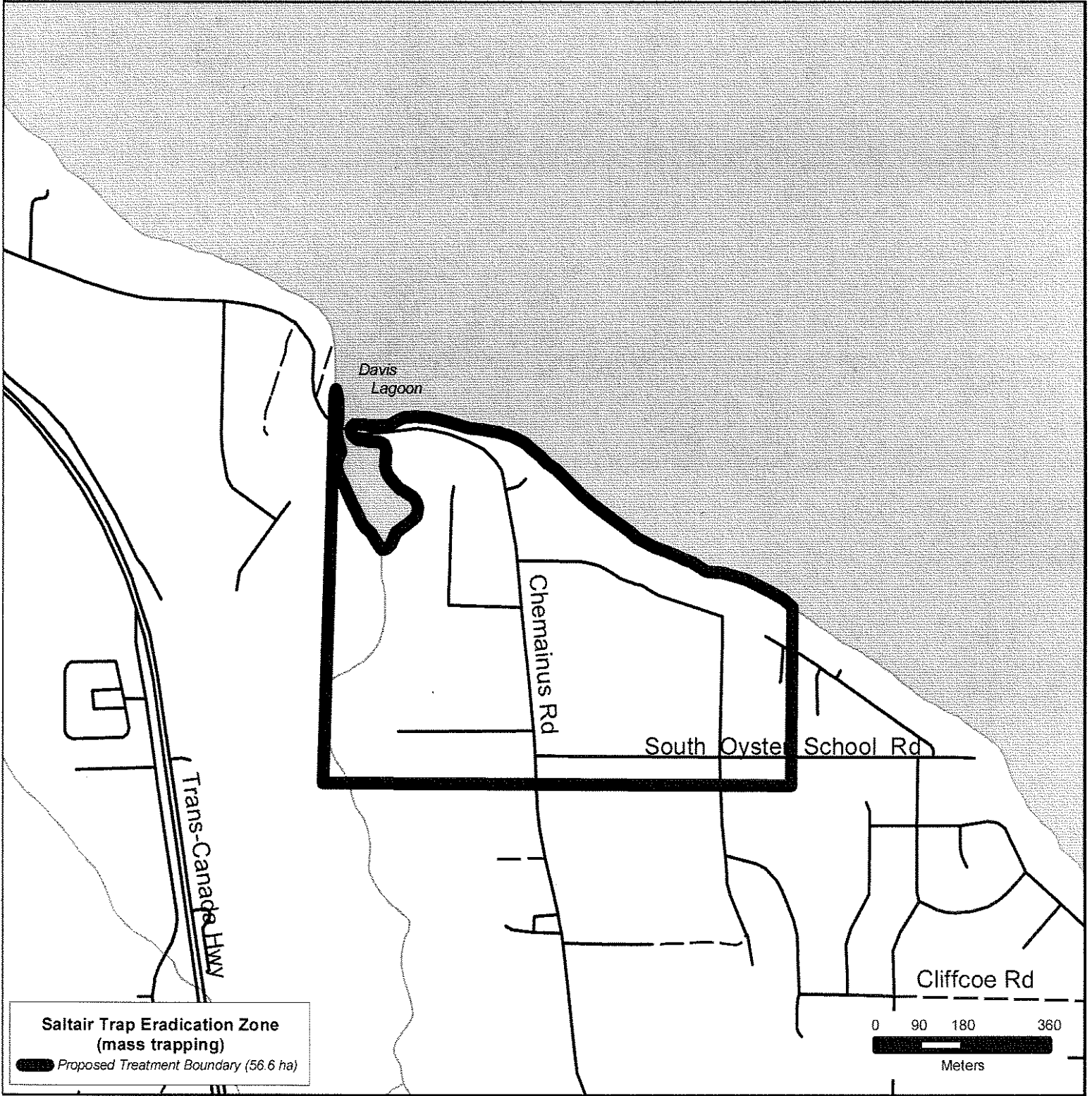
APPENDIX 2

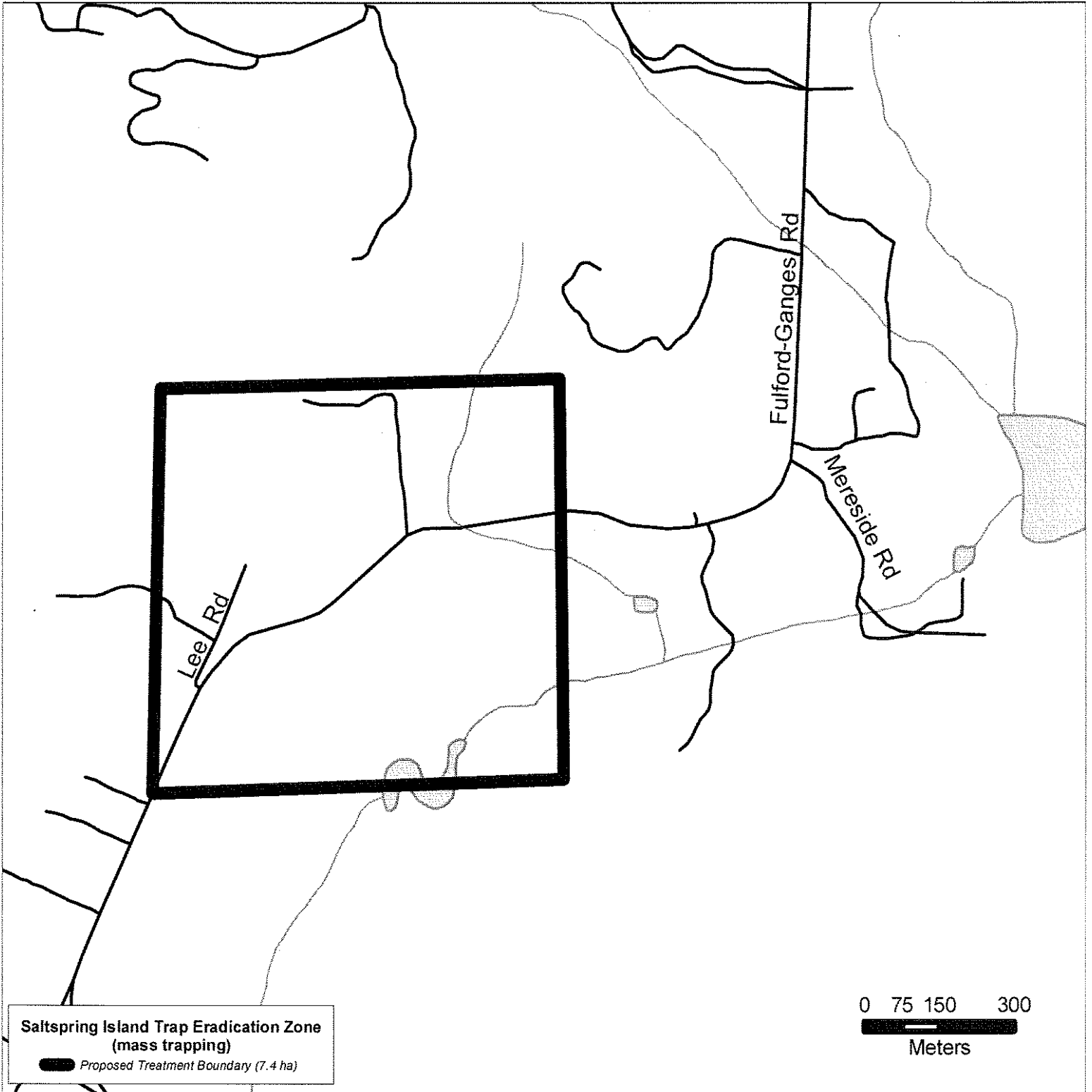
- 1 The following trap eradication zones are shown on the attached maps:
 - (a) Lake Cowichan Eradication Zone (mass trapping);
 - (b) Saltair Eradication Zone (mass trapping);
 - (c) Saltspring Island Eradication Zone (mass trapping).











**Saltspring Island Trap Eradication Zone
(mass trapping)**
Proposed Treatment Boundary (7.4 ha)

0 75 150 300
Meters